

## FEATURES

- Rated Voltages 415V a.c./250V d.c.
- Breaking Capacities 80kA a.c. 40kA d.c.
- Breaking Range and Utilisation Category gG/gM

## RS PRO BS INDUSTRIAL FUSE-LINKS WITH BOLTED CONNECTIONS

RS Stock No.: 2213700, 2213701



RS Professionally Approved Products bring to you professional quality parts across all product categories. Our product range has been tested by engineers and provides a comparable quality to the leading brands without paying a premium price.

# Slotted Tag Fuses

## Product Description

Type “N” & “T” fuse-links are for use in industrial installations and can be fitted into BS88 bolted fuse-holders and distribution fusegear.

Dimensions and current ratings of the type N&T Industrial Fuse-Links comply with the standardized requirements of IEC 60269-2 and BS 88-2. Additional types and current ratings are included in the range. N&T Industrial Fuse-Links can be fitted in Boltin Fuse-Holders or suitable fusegear.

## General Specifications

|                |                     |
|----------------|---------------------|
| Current Rating | 32A motor rated 63A |
| Fuse Size      | A1                  |
| Voltage Rating | 250 V dc, 415 V ac  |
| Fuse Standard  | IEC 60269-2/BS 88-2 |
| Fixing Centres | 44.5 mm             |
| Tag Width      | 9.5 mm              |
| Overall Length | 56 mm               |
| Body Diameter  | 12.7 mm             |
| Body Length    | 33 mm               |

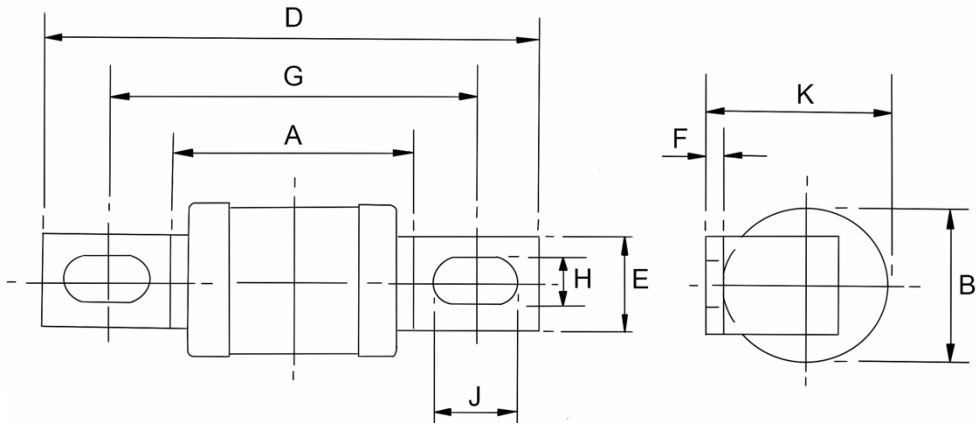
## Approvals

|                      |                     |
|----------------------|---------------------|
| <b>Standards Met</b> | IEC 60269-2/BS 88-2 |
|----------------------|---------------------|

## Similar Products

| Stock No.  | Brand  | Voltage Rating a.c. Volt | Current Rating Amps |
|------------|--------|--------------------------|---------------------|
| (221-3702) | RS PRO | 415                      | 6                   |
| (221-3691) | RS PRO | 415                      | 10                  |
| (221-3693) | RS PRO | 415                      | 25                  |
| (221-3695) | RS PRO | 415                      | 40                  |
| (221-3698) | RS PRO | 415                      | 50                  |

## Slotted Tag Fuses



| Voltage Rating (V) | Current Rating (A) | Fig No. | Dimensions in millimetres |        |        |        |        |        |        |            |        |
|--------------------|--------------------|---------|---------------------------|--------|--------|--------|--------|--------|--------|------------|--------|
|                    |                    |         | A max.                    | B max. | D max. | E nom. | F max. | G nom. | H nom. | J min.     | K max. |
| 240                | 2-32               | 1       | 33                        | 12.7   | 56     | 9.5    | 0.8    | 44.5   | 4.8    | Open ended | 14.3   |