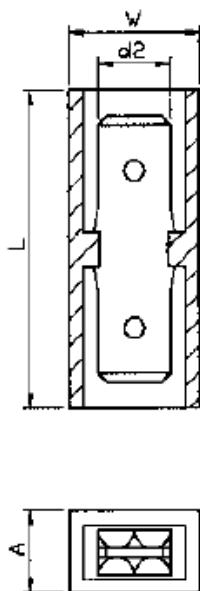


Datasheet

Crimp Connector, insulated

RS Stock number [510-4725](#)

Drawing (mm):



Tolerance	d2 ± 0.20	W ± 1.00	L ± 1.00	A ± 0.50
Size (mm)	6.35	11.50	27.80	7.30

Specifications:

Electrical Rating: 75°C 300 volts max.