

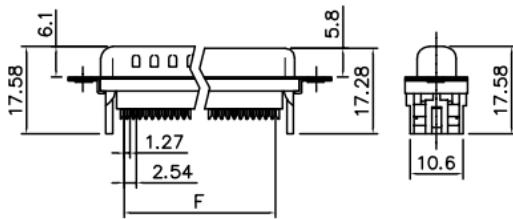
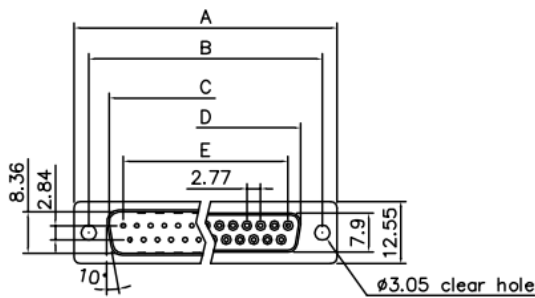
# Datasheet

## RS 2.77mm Pitch 25 Way IDC D-sub Connector, Socket, Zinc Plated Steel Shell

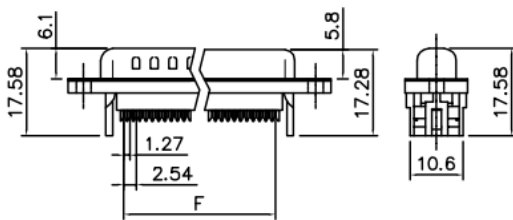
RS Stock number 492-660



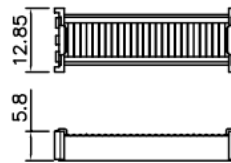
Dimensions: (mm)



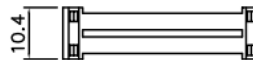
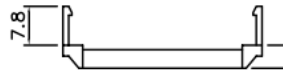
Without Insulator Support



With Insulator Support



Cover



Strain Relief



## Product Specification

### Material

Insulator : Glass-Filled Thermoplastic PBT, UL94V-0

Contact : Brass

Shell : Steel, 100u" Tin Over 50u" min Copper

Clinch Nut : Brass, Nickel Plated

Screwlock : Brass, Nickel Plated

### Electrical

Contact Resistance : 20 milliohms  
Max at 1 AMP DC.

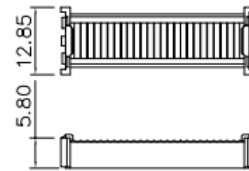
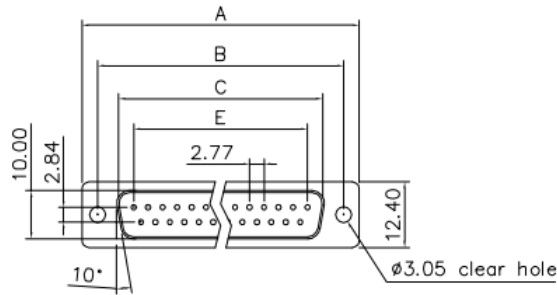
Insulation Resistance : 1000  
megohms at 500 VDC

Dielectric Withstanding Voltage :  
1000 VAC/rms 60Hz for 1 minute

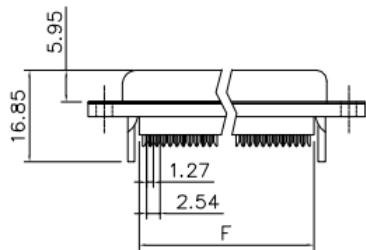
Current Rating : 3 AMP

Volatge Rating : 250 VAC/rms 60Hz

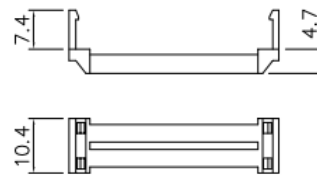
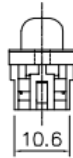
**RoHS COMPLIANT**



Cover



With Insulator Support



Strain Relief

## Product Specification

### Material

Insulator : Glass-Filled Thermoplastic PBT, UL94V-0

Contact : Copper alloy

### Electrical

Contact Resistance : 20 milliohms  
Max at 1 AMP DC.

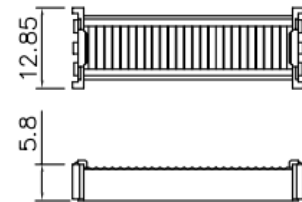
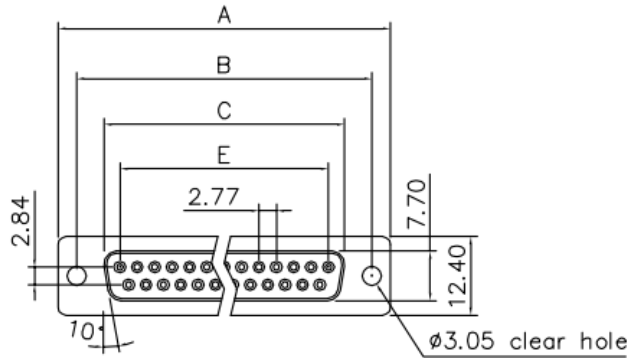
Insulation Resistance : 1000  
magohms at 500 VDC

Dielectric Withstanding Voltage :  
1000 VAC/rms 60Hz for 1 minute

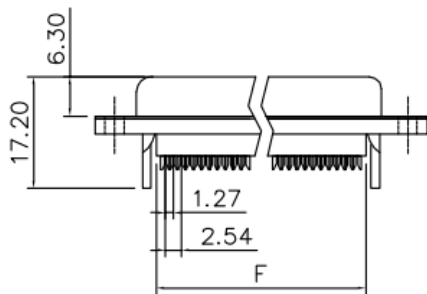
Current Rating : 3 AMP

Volatge Rating : 250 VAC/rms 60Hz

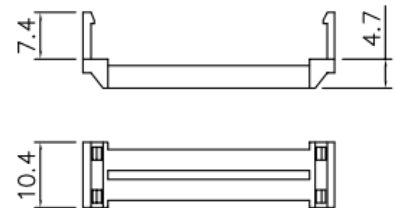
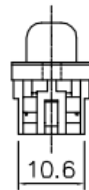
RoHS COMPLIANT



Cover



With Insulator Support



Strain Relief

## Product Specification

### Material

Insulator : Glass-Filled Thermoplastic PBT, UL94V-0

Contact : Copper alloy

### Electrical

Contact Resistance : 20 milliohms  
Max at 1 AMP DC.

Insulation Resistance : 1000  
megohms at 500 VDC

Dielectric Withstanding Voltage :  
1000 VAC/rms 60Hz for 1 minute

Current Rating : 3 AMP

Volatge Rating : 250 VAC/rms 60Hz

f: Flange Mounting Option:

