

Straight Blade Devices

15A, 250V, 2 Pole, 3 Wire Grounding

HBL® Extra Heavy Duty, Specification Grade, Duplex Receptacle

- Features
- Deep nylon body design delivers increased impact resistance
 - One-piece brass integral ground strap
 - Finder Groove Face
 - Deep body design with circuit ID face

Ordering Information

| Description | Device Color | UPC | Catalog Number |
|-----------------------|--------------|--------------|----------------|
| Deep body design with | Brown | 783585435541 | HBL5662 |

Listings

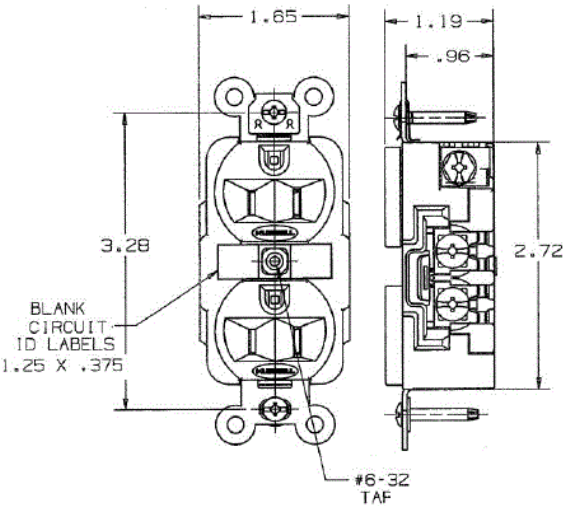
UL Listed to UL498 File No. E2186
Certified to CSA 22.2, No. 42 File 285
NEMA® WD-6 Compliant
NEMA® WD-6 Compliant

Specifications

| | |
|-------------------------------|----------------------|
| Face | Nylon |
| Base | PBT |
| Power Contacts | .036 in. (.9) Brass |
| Wire Clamps | .031 in. (.8) Brass |
| Clamping Plate | Nickel plated brass |
| Terminal Screws | Plated brass |
| Mounting Strap | .050 in. (1.3) Brass |
| Automatic Self-grounding Clip | Stainless steel |
| Mounting Screws | Zinc plated steel |

Performance

| | |
|-------------------------|--|
| Electrical | |
| Current Interrupting | Certified for current interrupting at full rated current |
| Dielectric Voltage | Withstands 2,000V minimum |
| Mechanical | |
| Product Identification | Ratings are a permanent part of the device |
| Terminal Accommodation | #14-#10 AWG copper stranded or solid conductor only |
| Terminal Identification | Terminals identified in accordance with UL 498 and CSA |
| Environmental | |
| Flammability | Top: UL 94V-2, Base: UL 94V-0 |
| Operating Temperatures | Maximum continuous 75°C; minimum -40°C (w/o impact) |



- Online Resources
- Customer Use Drawing
 - eCatalog
 - Installation Instructions

- Accessories
- Wallplate or Weatherproof Cover
 - Duplex Openin