

## FEATURES

- Stainless steel robust construction
- Anti-vandal design
- Easy installation
- Screw terminals
- Illuminated & no light options
- 16mm – 30mm options
- IP rated
- Range of voltages

## RS PRO Push Button Switches

RS Stock No.: 2489254



Image for illustration purposes only

RS Professionally Approved Products bring to you professional quality parts across all product categories. Our product range has been tested by engineers and provides a comparable quality to the leading brands without paying a premium price.

## Product Description

- *High quality panel mount switches constructed from stainless steel for superior durability for both internal and external applications.*
- *Typically used for door and gate entry control, plant and machinery, control panels, escalators and moving walkways, lifts and instrument control, process handling and access equipment.*
- *Often used with panel mount indicators, panel alarms, buzzers and display screens.*

## General Specifications

<b>Type</b>	SW 30mm Scr Lat Pwr Gn 240V
<b>Switch Operation</b>	Latching
<b>Contact Configuration</b>	1NO1NC DPST
<b>Illuminated</b>	Yes
<b>LED Voltage</b>	240V
<b>LED Colour</b>	Green
<b>Actuator Shape</b>	Round
<b>Legend</b>	Power
<b>Package Contains</b>	1 x Switch, 1 x Hex Nut, 1 x O-Ring

Material Characteristics	
<b>Case</b>	Stainless Steel
<b>Base</b>	PBT
<b>Contact</b>	Silver alloy
<b>Terminals</b>	Screw

## Electrical Specifications

<b>Voltage Rating</b>	250VAC
<b>Terminal Type</b>	Screw
<b>Wire Range</b>	1.5mm <sup>2</sup>

Contact Specifications	
Contact Current Rating	5A at 250VAC
Contact Resistance	≤50mΩ
Insulation Resistance	≥1,000MΩ
Dielectric Strength	1,780VAC
Total Travel	3.0mm +/- 0.2mm
Electrical Life	≥50,000 Cycles at Full Load

## Mechanical Specifications

Mounting Type	Panel Mount
Panel Thickness	1mm (min) to 14mm (max)
Panel Cut Out Diameter	30.20mm
Mechanical Life	≥1,000,000 operations
Actuating Force	3-5N
Torque	5-14Nm applied to rear locking nut

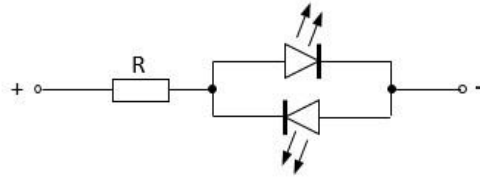
## Operation Environment Specifications

Maximum Operating Temperature	+80°C
Minimum Operating Temperature	-40°C

## Protection Category

IP Rating	IP65
Impact Protection Rating	IK10

DIMENSIONAL/SCHEMATIC DIAGRAMS / ILLUSTRATIONS



The LED illumination is polarity insensitive

