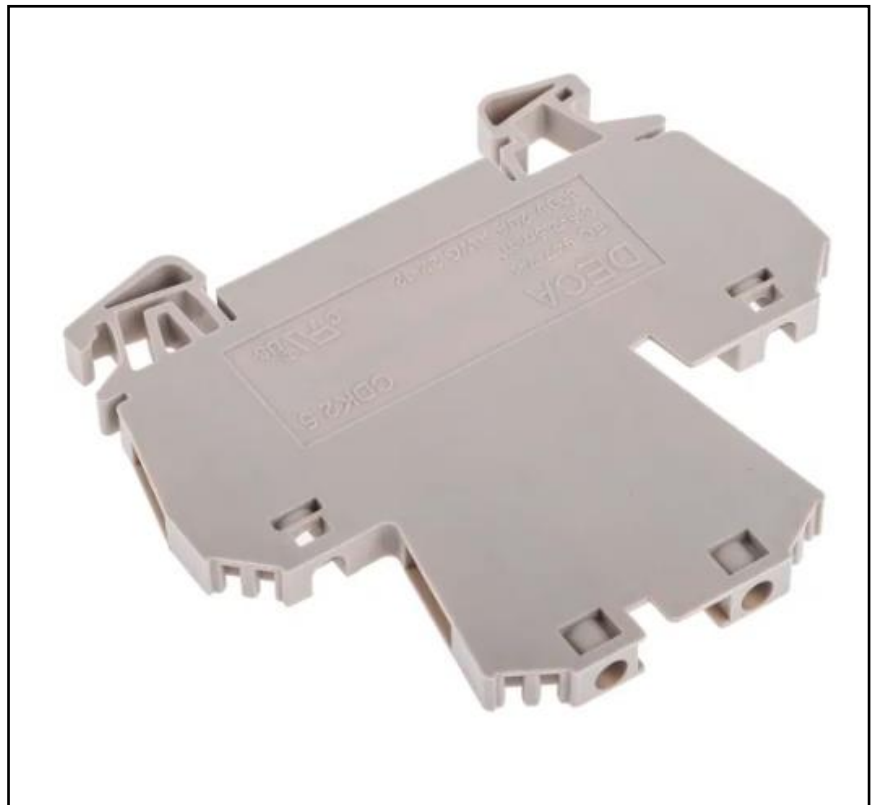


FEATURES

- Double-level terminal block
- Wire size of 22 AWG to 12 AWG
- CSA cable size of 2.5mm²
- Current rating of 20 A (UL/CSA) and 24 A (IEC)
- Voltage rating of 800V
- Screw termination

RS PRO, 800 V Double Level Terminal Block, Screw Termination

RS Stock No.: 878-7471



RS Professionally Approved Products bring to you professional quality parts across all product categories. Our product range has been tested by engineers and provides a comparable quality to the leading brands without paying a premium price.

Product Description

The terminal block has feet that allow for simple, snappable mounting and dismounting onto DIN rails. With a two-level set-up, there's no need to use rail extensions, which helps to save space and simplifies connections. The block has a high level of vibration resistance and requires very little maintenance, making it extremely reliable.

General Specifications

Colour	Grey
Number of levels	Double
Termination method	Screw Down
Screw Size	M2.6
Rail Type Compatibility	TS35x7.5 (5mm x 69mm x 63.5mm), TS35x15 (5mm x 69mm x 71mm)
Contamination Degree	3
Application	Circuit boards and control panels for industrial electronics

Electrical Specifications

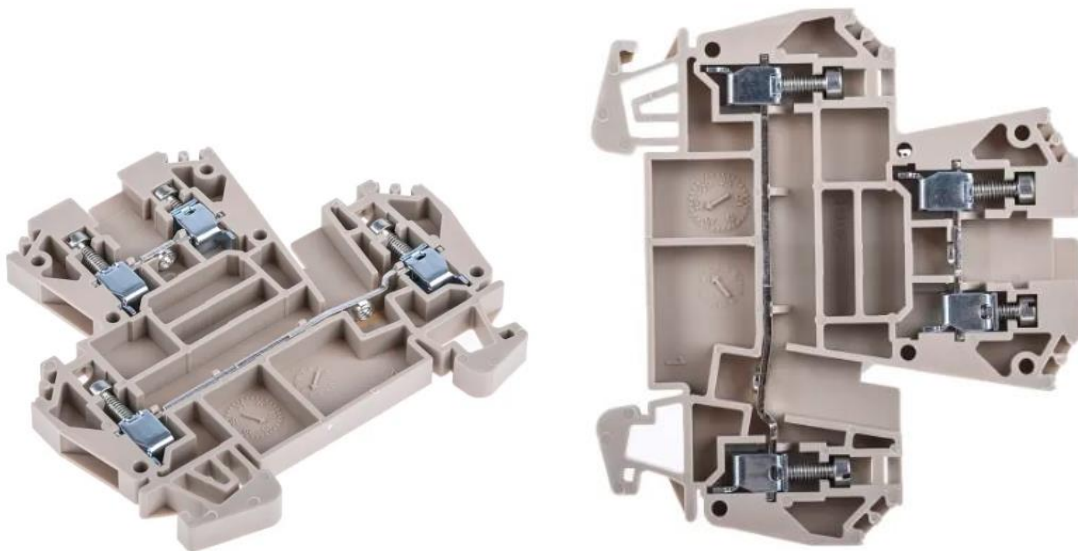
Current Rating	20A (UL), 20A (CSA), 24A (IEC)
Voltage Rating	600V (UL), 600V (CSA), 800V (IEC)
Rated Impulse Voltage	8kV

Mechanical Specifications

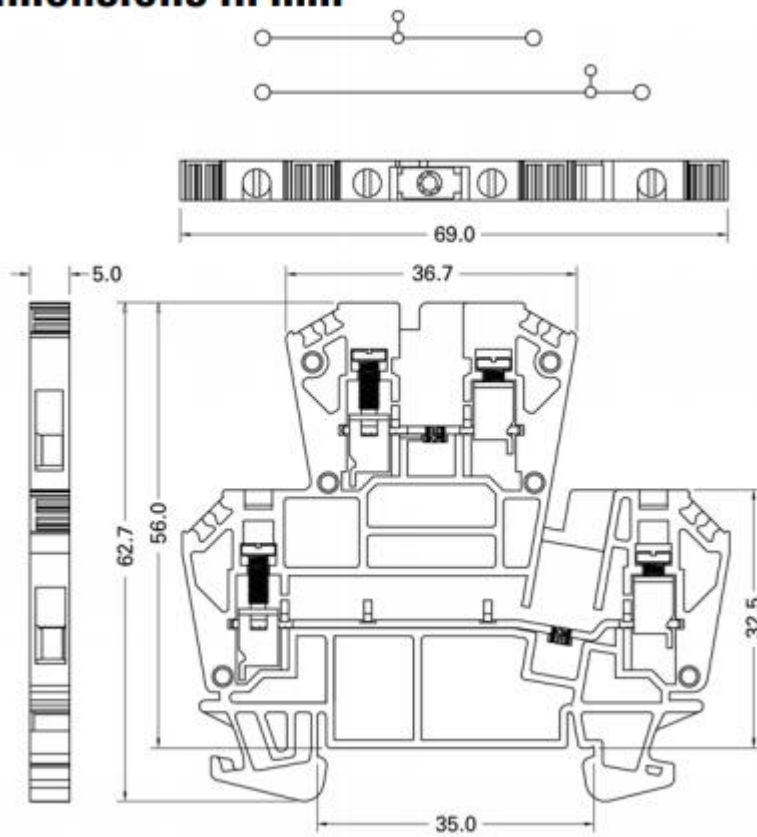
Wire size	22AWG to 12AWG
Cable CSA	2.5mm ²
Stripping Length	8mm to 10mm
Torque	8in-lbs
Unit Weight	13g

Approvals




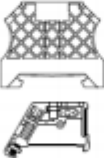


Standard met	UL, CSA, IEC, ROHS Compliant, cRUus
--------------	-------------------------------------



Dimensions in mm



Product Specifications:

Specifications	2.5mm ²	
Technical Data	Rated voltage / Rated current / Wire size	
UL	600V / 20A / AWG 22-12	
CSA	600V / 20A / AWG 22-12	
IEC	800V / 24A / 0.5-2.5mm ²	
Insulating impulse voltage withstand/pollution degree	8KV / 3	
Torque (in -lbs)	5	
Clamping Screw (M)	M2.6	
Insulation stripping length (mm)	8~10 mm	
Net weight per piece	13 g	
Material / Available Color (Standard Color: Beige)		
Rail Dimensions	T/W/H (mm)	
For TS35x7.5 	5 x 69 x 63.5	
For TS35x15 	5 x 69 x 71	
Accessories	Cat. No.	
End Bracket 	8787553	
	8787556	
Cross 	8787572	
Marking Tags 	8787590	