

Datasheet

SPDT Rocker Switch, On-On, Black

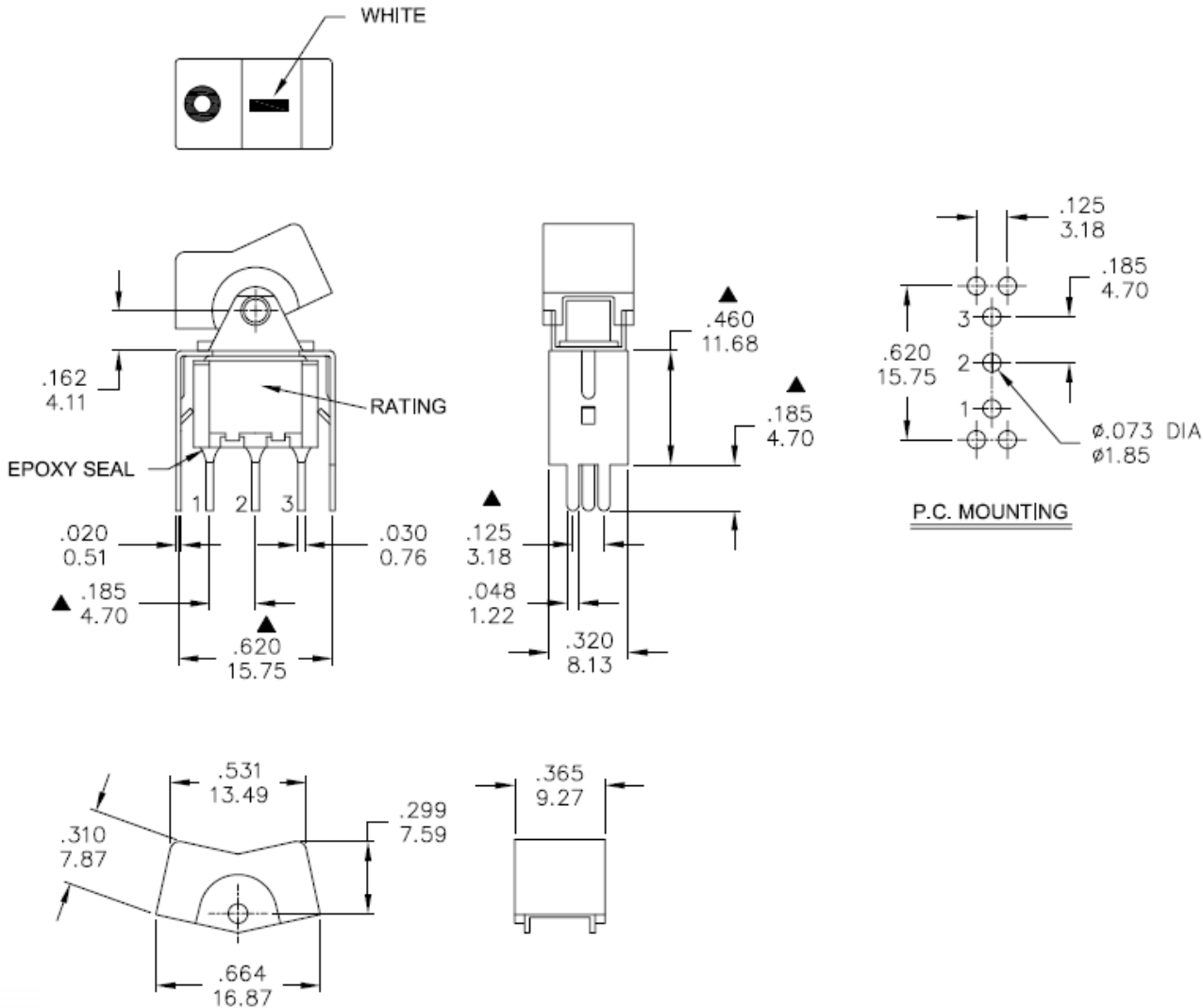
RS Stock number 734-6842



Specifications:

Mechanical Life:	40, 000 make-and-break cycles
Contact Resistance:	10m Ω max. initial @ 2-4VDC 100mA for both silver and gold plated contacts
Insulation Resistance:	1,000M Ω min
Dielectric Strength:	1,000 V rms @ sea level
Operating Temperature:	-30°C to 85°C
Case:	Diallyl phthalate (DAP) (UL94v-0)
Bushing:	Brass, nickel plated
Housing:	Stainless Steel
Switch Support:	Brass, tin plated
Terminal/Contact:	Brass, silver or gold plated
RoHS:	2002/95/EC

Dimensions – mm



Model No.	POS.1	POS.2	POS.3
3MS1	ON	NONE	ON
Term. Comm.	2-3	N/A	2-1
SCHEMATIC		N/A	

SWITCH FUNCTION