

Datasheet

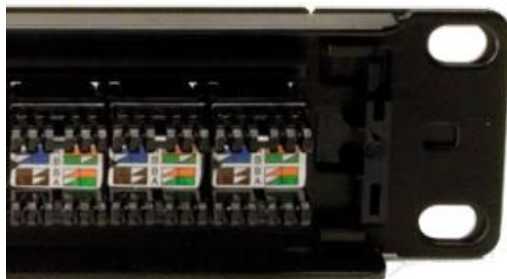
Cat6 24 Port RJ45 RJ Patch Panel UTP 1U Black

RS Stock number [556-635](#)

Close up



Rear View



Specifications:

Panel width:	483mm
Panel Depth:	40mm
Panel Height:	44.45mm
Colour:	Black RAL 9005 and RAL 7035
Blocks:	Dual block (110 and LSA) termination
RJ-45:	50 Micron gold plated contact pins
Specification:	EIA/TIA 568A/568-B2.2002

Features:

- 24 Port RJ-45 in 1U
- Category 6 compliant
- Dual block (110 and LSA) style termination
- Easy field label system
- Port identification