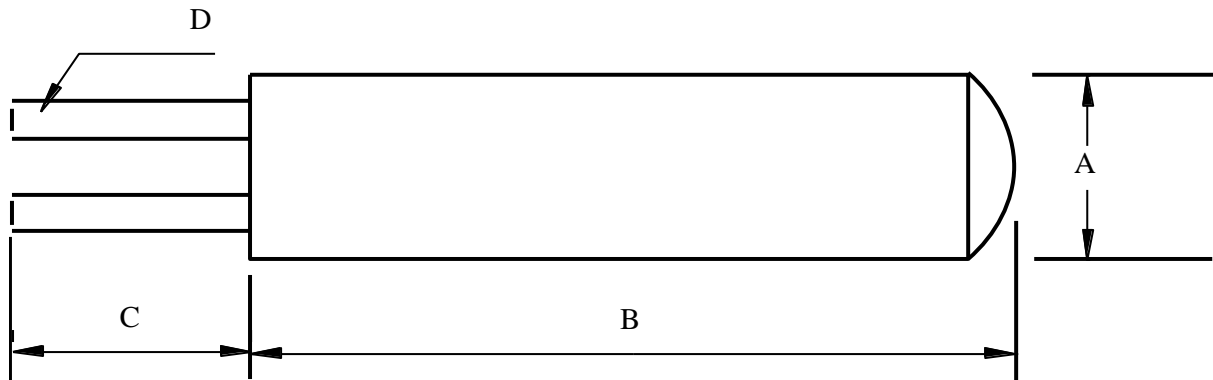




This product is the PT100 element used inside these probe



<b>Product description</b>	<b>Ceramic, wire wound platinum resistance detector</b>	
<b>Ro</b>	<b>100± 0.010Ω</b>	
<b>Conforms</b>	<b>EN;60751;1996</b>	<b>1/10<sup>TH</sup> Class B</b>
<b>Construction</b>	<b>Partially supported coil</b>	
<b>Temperature range</b>	<b>-200° +650°C</b>	
<b>Lead Material</b>	<b>Pure palladium</b>	
<b>Self heating effect;</b>	<b>Air</b>	<b>200mK/mW</b>
<b>Response time (t<sub>0.5</sub>);</b>	<b>Air at 1 m/s</b>	<b>17 seconds</b>
	<b>Water at 1 m/s</b>	<b>0.21 seconds</b>
<b>Dimensions</b>	<b>A</b>	<b>2.8±0.05mm</b>
	<b>B</b>	<b>25±1mm</b>
<b>minimum</b>	<b>C</b>	<b>7mm</b>
	<b>D</b>	<b>Ø0.37mm</b>
<b>Sensing length Available</b>	<b>23mm</b>	<b>Immediately</b>