

FEATURES

- All Fluids compatible
- Mechanical resistance
- Silicon free

RS PRO MALE HOSE ADAPTER (PARALLEL)

RS Stock No.: 2312547



RS PROfessionally Approved Products bring to you professional quality parts across all product categories. Our product range has been tested by engineers and provides a comparable quality to the leading brands without paying a premium price.

Product Description

The RS PRO male hose adapter (parallel) works in -0.99 bar to 150 bar pressure range. It mainly used in compressed air pneumatic automation, industrial water circuits, inert gases, Fluids, Steam, vacuum applications. High performances in pressure and temperatures (+300°C). Available with sharp threads. RoHS and REACH compliant.

General Specifications

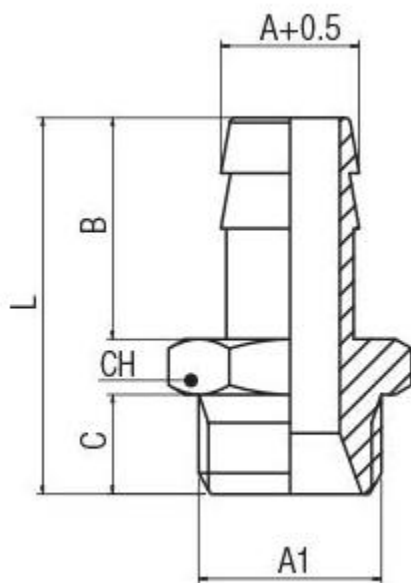
Coupling Type	Straight
Hose Connector Type	Hose Adapter
Body Material	Brass
Application	Compressed Air, Pneumatic Automation, Textile, Packaging, Handling

Mechanical Specifications

Maximum Working Pressure	150bar
Threaded Connection	1/8 in BSPP Male
Thread Standard	BSPP
Thread Gender	Male
Connector Gender	Male
Hose Inner Diameter	6mm
Thread Size	1/8in
Length	30mm
Wrench Size	14mm

Similar Products

Parameters	2312502	2312503
Brand	RS PRO	RS PRO
Coupling Type	Straight	Straight
Body Material	Brass	Brass
Maximum Working Pressure	10bar	10bar
Connector Gender	Male	Male
Hose Inner Diameter	4mm	6mm
Hose Outer Diameter	11mm	11mm
Application	Compressed Air, Pneumatic Automation, Textile, Packaging, Handling	Compressed Air, Pneumatic Automation, Textile, Packaging, Handling



A	A1	B	C	L	CH	Pack
6	1/8	20	6	30	14	10