

## General Description

The MAX31875 evaluation kit (EV kit) demonstrates the MAX31875  $\pm 2^{\circ}\text{C}$ -accurate local temperature sensor with I<sup>2</sup>C/SMBus interface. The EV kit includes a graphical user interface (GUI) that provides communication over I<sup>2</sup>C with an on-board master IC.

The MAX31875 EV kit comes with the MAX31875ROTZS+ installed.

## Features

- Windows® 7, Windows 8/8.1, and Windows 10 Compatible Software

Ordering Information appears at end of data sheet.

## Quick Start

### Required Equipment

- MAX31875 EV kit (includes Micro-USB cable)
- USB2PMB2 USB to I<sup>2</sup>C interface board
- Windows PC

**Note:** In the following sections, software-related items are identified by bolding. Text in **bold** refers to items directly from the EV kit software. Text in **bold and underlined** refers to items from the Windows operating system.

### Procedure

The EV kit is fully assembled and tested. Follow the steps below to verify board operation:

- 1) Visit <http://www.maximintegrated.com/en/design/tools/applications/evkit-software/> to download the latest version of the EV kit software, MAX31875EVKitSetupV1.0.zip. Save the EV kit software to a temporary folder and uncompress the ZIP file.
- 2) Connect the MAX31875PMB1 board to the USB-2PMB2 board.
- 3) Connect the USB cable from the PC to the USB-2PMB2 board. Windows may require some time to install its device driver.
- 4) Open the EV kit GUI, MAX31875EVKit.exe and select **Device**→**MAX31875PMB** option (or **MAX31875PMB**).
- 5) Click the **Scan Adapters** button, then click the **Connect** button. See [Figure 1](#).
- 6) Click the **Sample Continuously** button to begin plotting temperature data.

Windows is a registered trademark and registered service mark of Microsoft Corporation.

### General Description of Software

The main window of the MAX31875 EV kit software contains controls to evaluate the MAX31875 temperature sensor.

### USB2PMB Adapter

The controls within the **USB2PMB** <https://datasheets.maximintegrated.com/en/ds/USB2PMB2.pdf> Adapter groupbox allow the user to select the appropriate USB2PMB devices. When **Scan Adapters** button is pressed, it updates the drop-down list with all USB2PMB devices. With the EV kit connected to the PC, either **PMOD031875** or a similar serial number appears within the drop-down list. Make the appropriate selection respective of the IC and press the **Connect** button.

The **Attached Device Search** scans the I2C bus for supported devices. The software GUI supports all eight varieties of the MAX31875, which differ only in the I2C slave device address.

Along the right side of the window, there are drop-down boxes for each of the fields of the configuration register. Additionally, the raw register values can be read and written by the **Temperature**, **Configuration**, **Thyst**, and **TOS** controls in the upper right corner of the window.

Sample rate is determined by the **0x006 Conversion Rate[1:0]** drop-down box. Click **Sample Continuously** to read temperature register and plot on graph at the configured sample rate.

The **One-Shot Read** button triggers a single temperature reading. The MAX31875 must be in Shutdown mode to enable One-Shot Read.

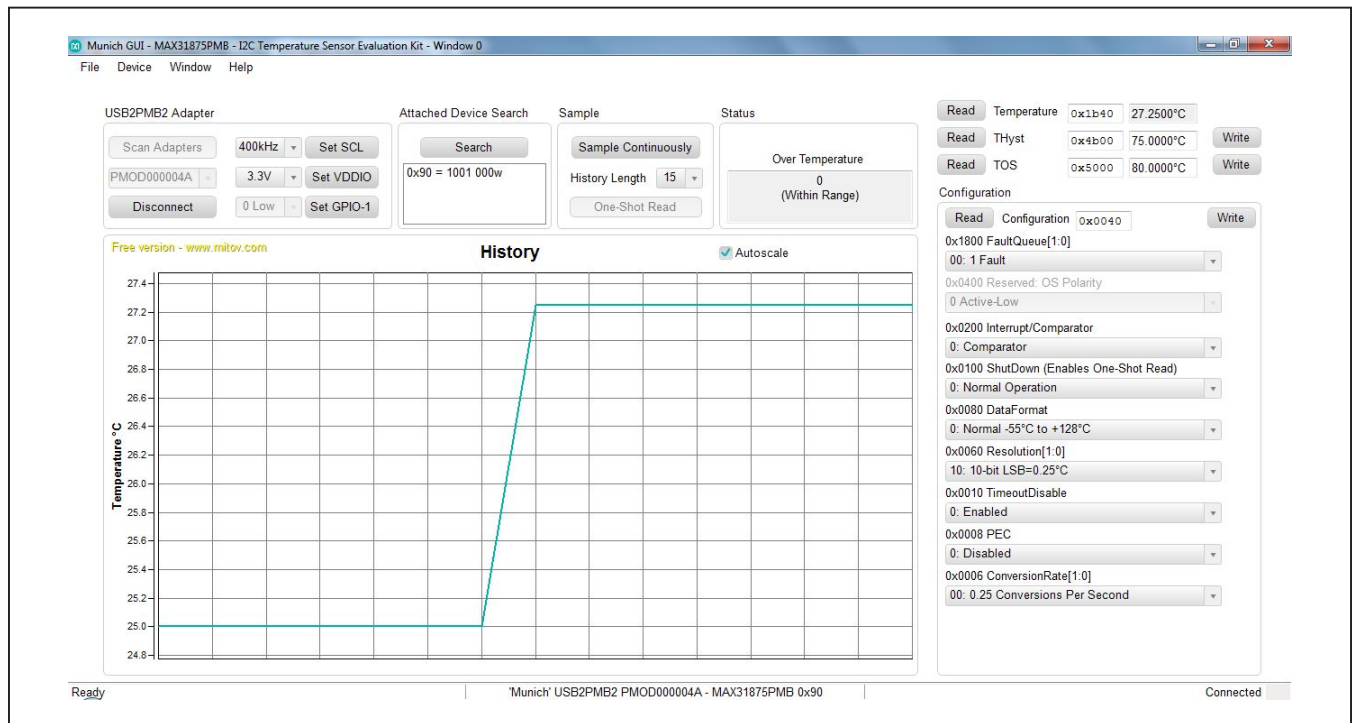


Figure 1. MAX31875 EV Kit Main Window

### General Description of Hardware

The MAX31875 EV kit demonstrates the MAX31875  $\pm 2^{\circ}\text{C}$ -accurate local temperature sensor with I<sup>2</sup>C/SMBus interface. The EV kit includes the USB2PMB2 master for all I<sup>2</sup>C and I/O communication.

### Extension Cable

If using a 6-pin extension cable between the USB2PMB2 and MAX31875PMB1 board, only the top row (pins 1–6) need to be connected.

### Ordering Information

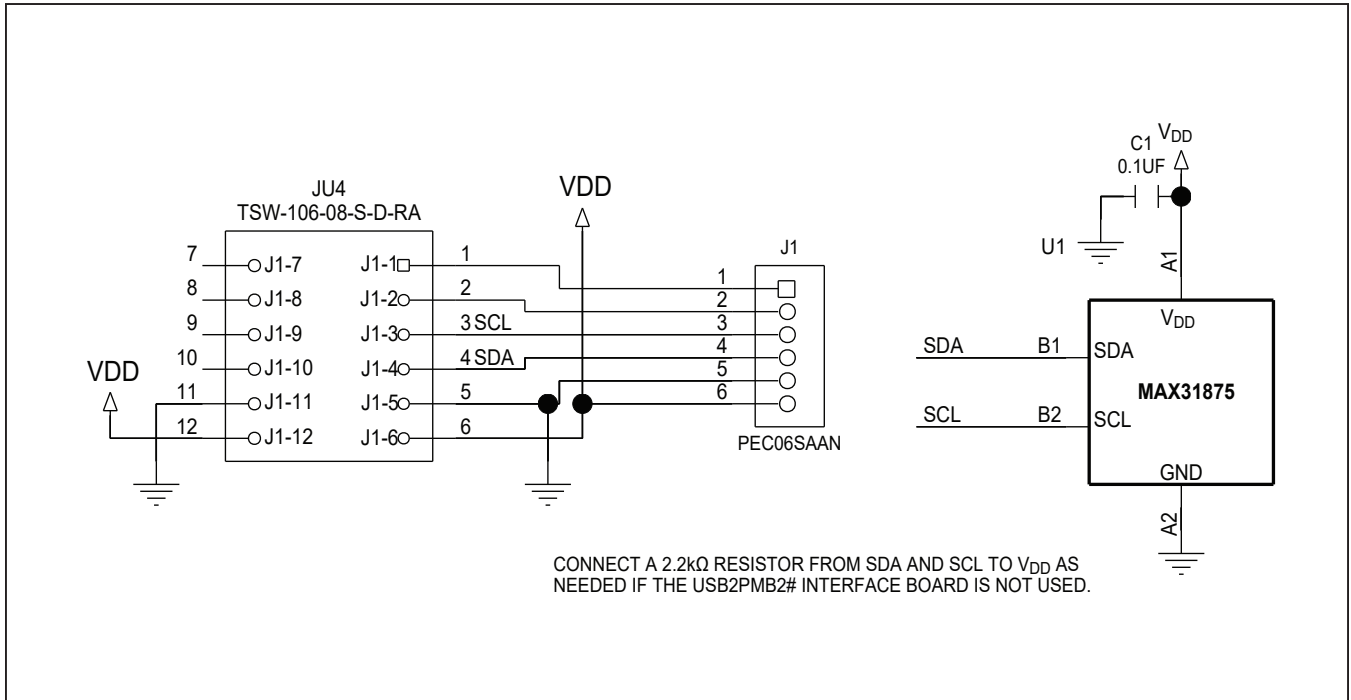
| PART           | TYPE   |
|----------------|--------|
| MAX31875EVKIT# | EV Kit |

#Denotes RoHS compliant.

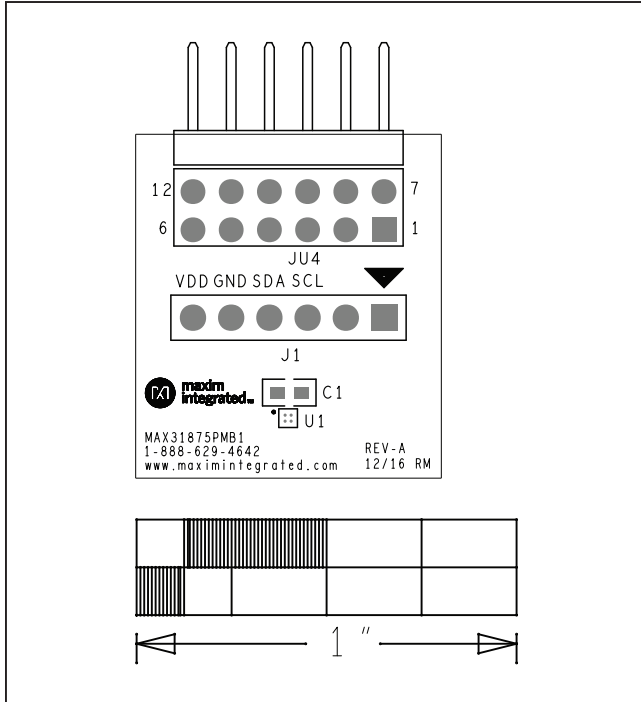
### MAX31875 EV Kit Bill of Materials

| ITEM  | REF_DES | DNI/DNP | QTY | MFG PART #          | MANUFACTURER              | VALUE             | DESCRIPTION  | COMMENTS |
|-------|---------|---------|-----|---------------------|---------------------------|-------------------|--|----------|
| 1     | C1      |         | 1   | C1608X8R1E104K080AA | TDK                       | 0.1UF             | CAPACITOR; SMT (0603); CERAMIC CHIP; 0.1UF; 25V; TOL=10%; TG=-55 DEGC TO +150 DEGC; TC=X8R |          |
| 2     | J1      |         | 1   | PEC06SAAN           | SULLINS ELECTRONICS CORP. | PEC06SAAN         | CONNECTOR; MALE; THROUGH HOLE; BREAKAWAY; STRAIGHT; 6PINS                                  |          |
| 3     | JU4     |         | 1   | TSW-106-08-S-D-RA   | SAMTEC                    | TSW-106-08-S-D-RA | CONNECTOR; THROUGH HOLE; DOUBLE ROW; RIGHT ANGLE; 12PINS;                                  |          |
| 4     | U1      |         | 1   | MAX31875            | MAXIM                     | MAX31875          | EVKIT PART-IC; MAX31875; PACKAGE OUTLINE: 21-100151A; PACKAGE CODE: Z40A0+1; WLP4;         |          |
| 5     | J2      | DNI     | 1   | PEC06SABN           | SULLINS ELECTRONICS CORP. | PEC06SABN         | CONNECTOR; MALE; THROUGH HOLE; BREAKAWAY; STRAIGHT; 6PINS; HEAD=0.230IN; TAIL=0.230IN      |          |
| 6     | PCB     | -       | 1   | MAX31875PMB         | MAXIM                     | PCB               | PCB Board:MAX31875PMB1 EVALUATION KIT  |          |
| TOTAL |         |         | 6   |                     |                           |                   |  |          |

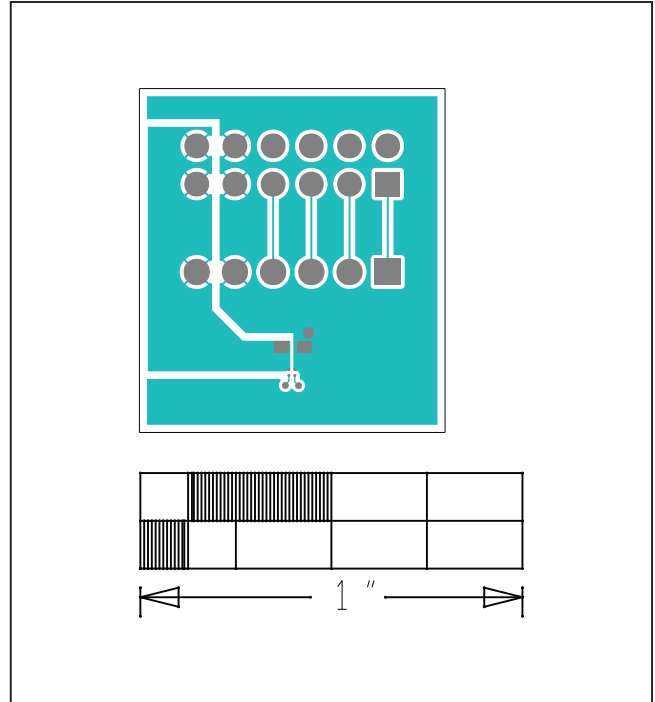
MAX31875 EV Kit Schematic



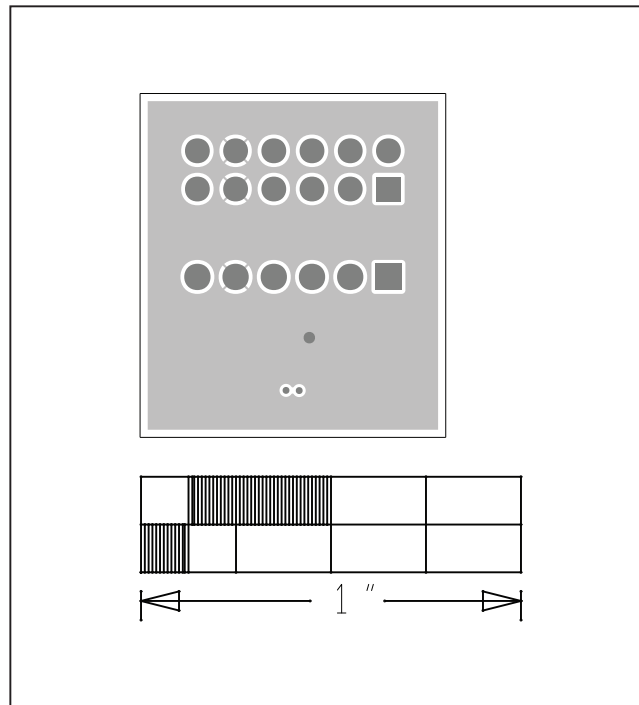
MAX31875 EV Kit PCB Layout Diagrams



MAX31875 EV Kit—Top Silkscreen

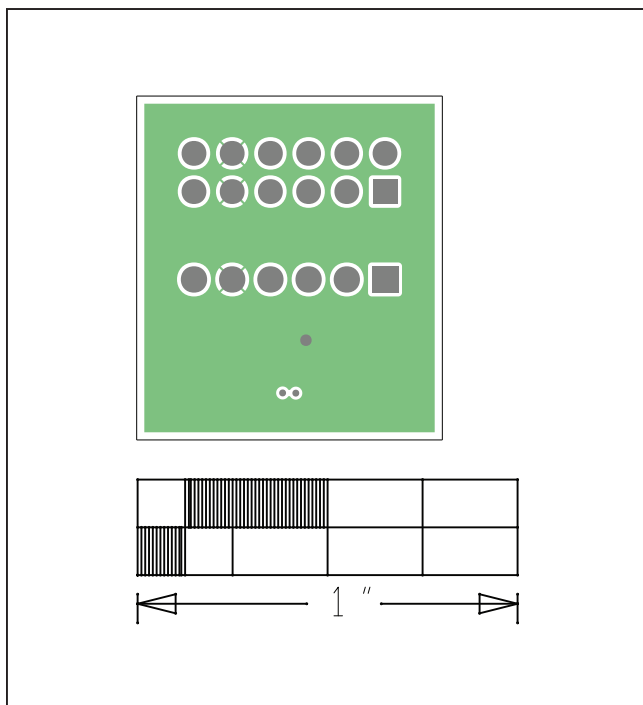


MAX31875 EV Kit—Top

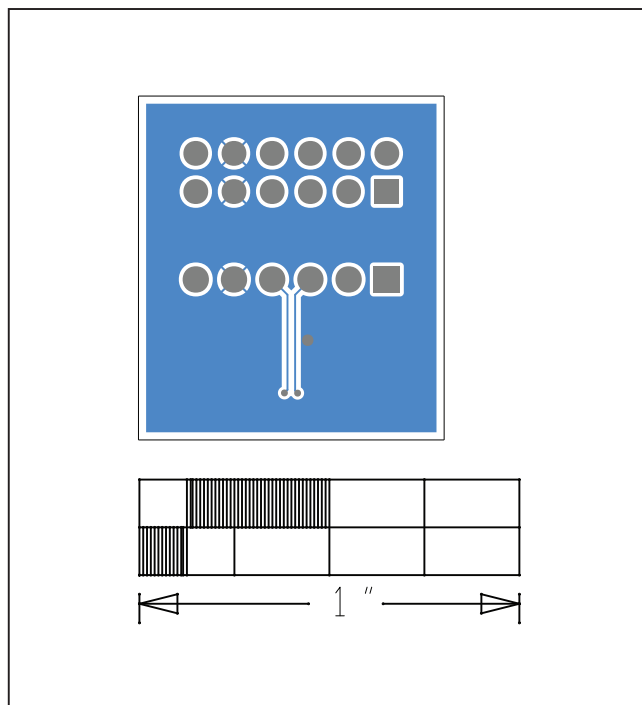


MAX31875 EV Kit—Layer 2

MAX31875 EV Kit PCB Layout Diagrams (continued)



MAX31875 EV Kit—Layer 3



MAX31875 EV Kit—Bottom

### Revision History

| REVISION NUMBER | REVISION DATE | DESCRIPTION     | PAGES CHANGED |
|-----------------|---------------|-----------------|---------------|
| 0               | 8/17          | Initial release | —             |

For pricing, delivery, and ordering information, please contact Maxim Direct at 1-888-629-4642, or visit Maxim Integrated's website at [www.maximintegrated.com](http://www.maximintegrated.com).

*Maxim Integrated cannot assume responsibility for use of any circuitry other than circuitry entirely embodied in a Maxim Integrated product. No circuit patent licenses are implied. Maxim Integrated reserves the right to change the circuitry and specifications without notice at any time.*