



Application Guide Sockets

CAT. NO.

KB15

KB25N

KB15_5

KB15N

KB15_15

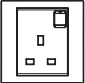

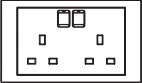
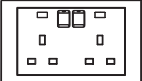
KB25

KB15_15N

Vivace

Thank you for choosing **Schneider Electric Vivace Sockets**. To ensure proper application of our product, please read through the following information before installation and use.

This application guide applies to the following Vivace products.

	Cat No.	Description
	KB15	13A 250V 1-Gang Switched Socket
	KB15N	13A 250V 1-Gang Switched Socket with Neon
	KB25	13A 250V 2-Gang Switched Socket
	KB25N	13A 250V 2-Gang Switched Socket with Neon



Cat No. **Description**
KB15_15 15A 250V 1-Gang Switched Socket



KB15_15N 15A 250V 1-Gang Switched Socket with Neon



KB15_5 5A 250V 1 Gang Switched Socket

SPECIFICATIONS

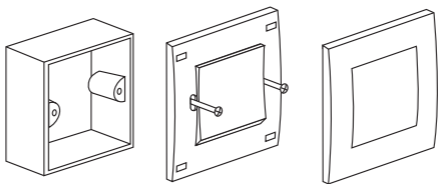
Voltage	: 250VAC
Dimension	: 87mm x 87mm (1 gang) / 87mm x 147mm (2 gang)
Mounting Centre	: 60.3mm / (120.3mm for KB25, KB25N)
Compliance	: KB15, KB15N, KB25, KB25N - BS 1363, SS 145, MS 589 KB15_15, KB15_15N - BS 546, SS 472, MS 1577 KB15_5 - BS 546

IMPORTANT NOTE

Please check your local wiring regulations before installation.

MOUNTING INSTRUCTION

Please refer to the following diagram for proper installation.



Remarks: For surround mounting, align the clip locks on the faceplate and press firm on the surround. Complete engagement of the clip locks is indicated by a clear "click" sound.

