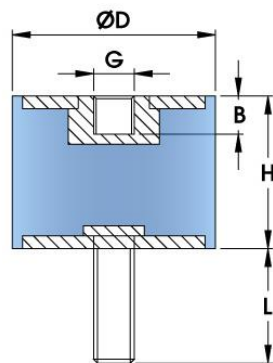




ENGLISH

### MALE – FEMALE Cylindrical Mounts

Simple and cost-effective vibration isolators that can be used in either compression and/or shear. We offer a large combination of available size and studs. Available in stainless steel metal parts or zinc plated mild steel. Please note that thread depth 'B' is same as the thread size, i.e. M3 stud will have a 3mm deep (B) female metal fixing



- H = Height
- D = Diameter
- G = Tread
- L = Stud Length
- B = Thread Depth

RS Code	Item Code	Description	Metal	D (mm)	H (mm)	G x L (mm)	Max Compression Load (kg)	Max Shear Load (kg)
1712590	B0808M36-A4-2	Cylindrical Mount (M/F) 8x8mm M3x6 60 ShA	Stainless steel 316	8	8	M3x6	4.84	1.5
1712591	B1010M46-2	Cylindrical Mount (M/F) 10x10mm M4x6 60 ShA	Mild steel	10	10	M4x6	8.47	3.1
1712592	B1510M46-1.55	Cylindrical Mount (M/F) 15x10mm M4x6 55 ShA	Mild steel	15	10	M4x6	14.4	4.3
1712593	B1515M515-1	Cylindrical Mount (M/F) 15x15mm M5x15 45 ShA	Mild steel	15	15	M5x15	6.6	2
1712594	B1515M410-A4-2	Cylindrical Mount (M/F) 15x15mm M4x10 60 ShA	Stainless steel 316	15	15	M4x10	14.63	5.2
1712595	B2015M512-1.5	Cylindrical Mount (M/F) 20x15mm M5x12 50 ShA	Mild steel	20	15	M5x12	17.7	5.8
1712597	B2525M620-2	Cylindrical Mount (M/F) 25x25mm M6x20 60 ShA	Mild steel	25	25	M6x20	40.26	14.4
1712598	B2525M820-A4-2	Cylindrical Mount (M/F) 25x25mm M8x20 60 ShA	Stainless steel 316	25	25	M8x20	40.26	14.4
1712599	B3015M620-E-2	Cylindrical Mount (M/F) 30x15mm M6x20 60 ShA	Mild steel	30	15	M6x20	79.53	20.8
1712600	B3020M615-EP-3	Cyl. Mount (M/F) 30x20mm M6x15 70 ShA EPDM	Mild Steel	30	20	M6x15	97.02	30.58
1712601	B3030M820-A4-2	Cylindrical Mount (M/F) 30x30mm	Stainless steel	30	30	M8x20	58.1	20.8



1712615	B10050M1647- 2	Cylindrical Mount (M/F) 100x50mm M16x47 60 ShA	Mild steel	100	50	M16x4 7	814	230.9
---------	-------------------	--	---------------	-----	----	------------	-----	-------