

## Datasheet

Stock No: 382-352

# RS Pro 5mm Bore Spherical Bearing



## Product Details

### Standard

Fitted with a Cu Zn 40 Mn Pb bronze insert

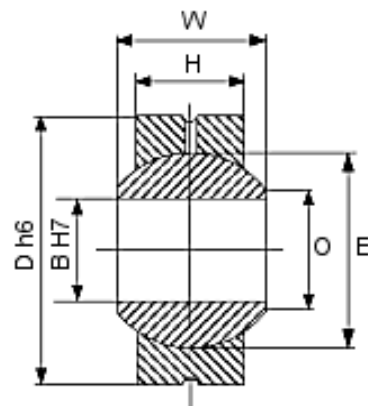
Factory fitted with Molykote BR2 grease, which may require lubrication in service

### Plain - Steel

Spherical bearings use a ball manufactured from hardened, ground, polished 100 CR6 steel.

## Specifications:

Bore Size	5mm
Outside Diameter	16mm
Static Axial Load Rating	190N
Static Radial Load Rating	780N



Order Code	Size	Static Loads		B	D	H	O	W	Ball Dia E	Weight
		Radial	Axial							
		kN	kN	mm	mm	mm	mm	mm	mm	g
382-352	5	7.8	1.9	5	16	6	7.71	8	11.11	9
382-368	6	9.8	2.4	6	18	6.75	8.96	9	12.7	12