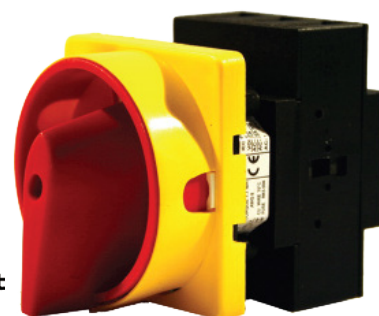


RS Part Number: **466-138** Specifications and dimensions



- Back of door mounting load break switch
- Red/Yellow handle padlockable

Dimensions	
Back of panel switch:	
Height	87 mm
Width	68 mm
Depth	56 mm
Handle:	
Height	64 mm
Width	64 mm
Depth	42 mm
Weight	0.265 Kg
Features	
Rated operational voltage Ue IEC &EN	690 V
Rated operational voltage Ue UL	600 V
Rated impulse withstand voltage Uimp	6 kV
Rated uninterrupted current Iu	63 A
Rated operational current Ie AC22A	63 A
Rated operational current Ie AC21A	80 A
Rated operational current Ie AC1	80 A
Rated operational power AC23A (50/60Hz) 230V	30 kW
Rated operational power AC23A (50/60Hz) 415V	37 kW
Rated operational power AC23A (50/60Hz) 690V	45 kW
Rated operational power AC3 (50/60Hz) 230V	22 kW
Rated operational power AC3 (50/60Hz) 415V	22 kW
Rated operational power AC3 (50/60Hz) 690V	30 kW
UL power rating 3 phase DOL 110V	7.5 hp
UL power rating 3 phase DOL 230V	15 hp
UL power rating 3 phase DOL 480V	25 hp
UL power rating 3 phase DOL 600V	30 hp
UL power rating 1 phase DOL 110V	3 hp
UL power rating 1 phase DOL 230V	7.5 hp
UL short circuit fuse rating class J	70 A
UL rated fused short circuit current	10 kA
IEC short circuit capacity max fuse size GI	63 A
IEC rated fused short circuit current	30 kA
Maximum terminal capacity	25 mm ²
Recommended tightening torque	2.0 Nm
Related Products	
Neutral contact early make/late break	136-5280
Main pole contact	136-5281
Gasket to provide IP65 rating	773-7995