

Features

- 316 Stainless Steel hose nipple, fully threaded
- 150 lb fitting
- Screwed BSPT (Tapered) connection
- Barbed hose tail connection
- Various sizes, from 3/8" (9.5 mm) up to 2" (51 mm)

RS PRO Stainless Steel Hexagon Hose Nipple 3/4in R(T) Male Male 2.36in

RS Stock No.: 499-3760



RS PRO Professionally Approved Products bring to you professional quality parts across all product categories. Our product range has been tested by engineers and provides a comparable quality to the leading brands without paying a premium price.

Product Description

Brought to you by RS PRO, a series of stainless steel threaded fittings, suitable for applications requiring a secure and reliable pipe connection. Heavily used within the plumbing industry, water and gas will flow through in a tightly sealed construction. These fittings are made from a durable 316 stainless steel and incorporate a hexagon nipple to ensure a simple and secure connection for pipe and hose work. All models are highly reliable and excellent quality.

General Specifications

Connection 1	3/4 in R Male
Connection 2	20 mm Barbed Male
Shape	Hexagon
Fitting Type	Hose Nipple
Thread Size 1	3/4in
Connection Gender 1	Male
Connection Gender 2	Male
Thread Standard 1	R (Taper)
Weight	0.0854kg
Material	S/S 316
Application	All throughout the home (bathroom, kitchen etc.) Any building with running water, heating or gas; Sewage and underground networks; Ships and boats; Car engines

Mechanical Specifications

Length	2.36in
--------	--------

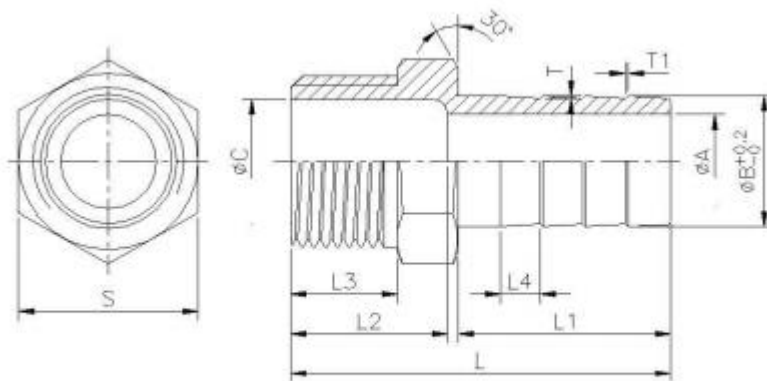


Figure 1

A	B	C	L	L1	L2	L3	L4	S	T	T1	Weight (kg)
15	20	21	60	34	21.5	15.5	6.8	28	0.5	N/A	0.0854