

## Datasheet

### Sensor Holder



### Specifications

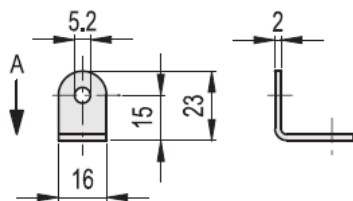
- Material

Sandblasted AISI 304 stainless steel, matte finish

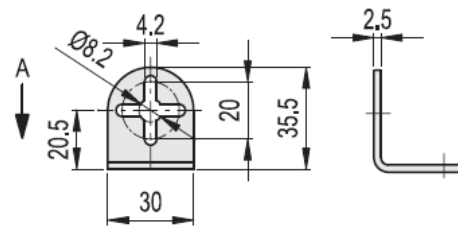
### Features and applications

In MSM-LA-30 sensor holders, the cross-shaped hole provides a more precise regulation for fixing to MSM-F connecting clamps and it also allows the use of two clamping screws.

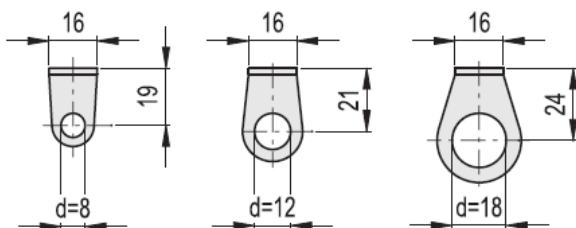
MSM-LA-16



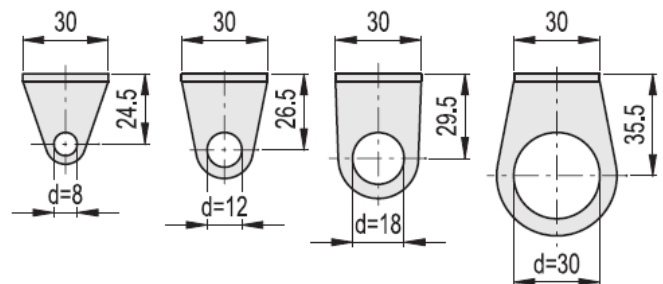
MSM-LA-30



View on A



View on A



### Main Dimensions

Stock No.	d1	Series
7866185	8	MSM-LA-16
7866197	12	MSM-LA-16
7866201	18	MSM-LA-16
7866194	8	MSM-LA-30
7866191	12	MSM-LA-30
7866204	18	MSM-LA-30
7866208	30	MSM-LA-30