



ENGLISH

# Datasheet

Stock No: 1243882

# RS Pro

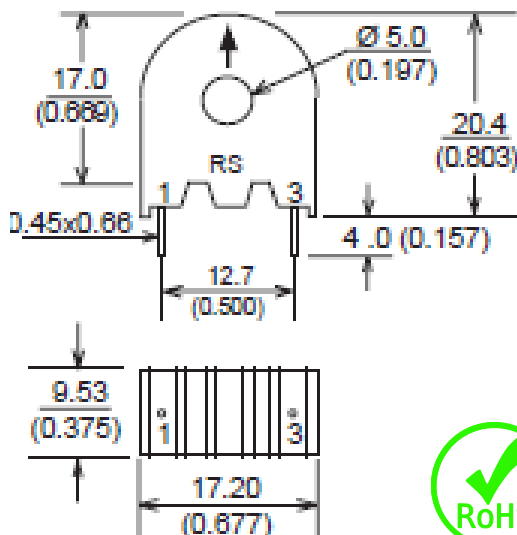
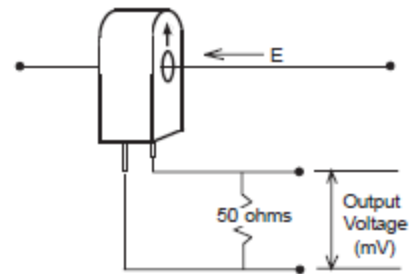
## Current Sensor for 50/60 Hz



The current sensors operate as the sealed secondary of a current transformer while the conductor carrying the current to be measured functions as a one turn primary. Measurement accuracy can be improved by increasing the number of primary turns. Applications include detection of branch circuit overload and load drop or shutdown.

### Features

- Fully encapsulated for optimal PC board mtg.
- Mains frequency of 50/60 Hz
- Primary current ratings from 1 to 10 Amps
- Tolerance to output voltage 10%
- Primary to secondary isolated to 2500 VAC
- Operating temperature range: -40° C to +120°C
- Competitive pricing due to high volume production
- Fully RoHS compliant



Typical Response  
ASM-010

