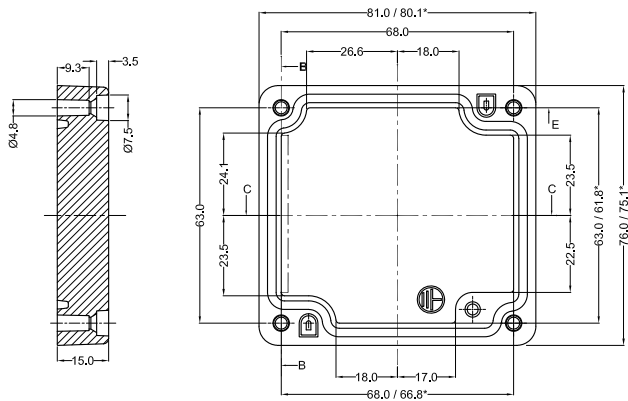
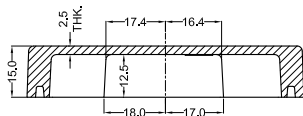


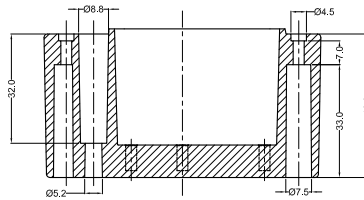
LID



SECTION B-B

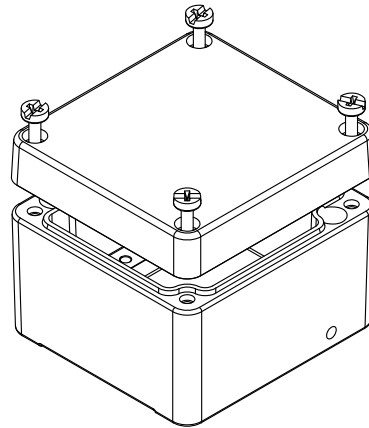
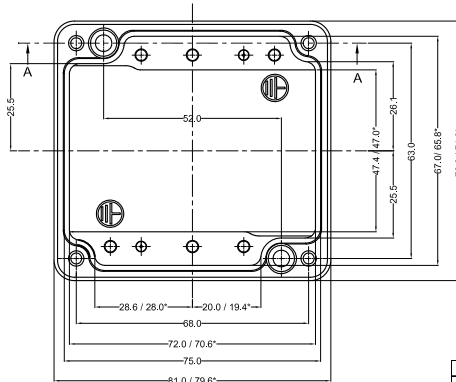


SECTION C-C



SECTION A-A

BASE



GENERAL SPECIFICATION AND AREA CLASSIFICATION:

- STANDARDS - IEC/EN 60079-0, IEC/EN 60079-7 & IEC/En 60079-31.
- MATERIAL COMPOSITION - AISI 12
- DEGREE OF PROTECTION IP66 AS PER IEC 60529 : 1989 +A1 : 2000
- GASKET MANUFACTURER - WACKER CHEMIE AG, MODEL: CENUSIL R 150 AND - CONTINUOUS OPERATING TEMPERATURE AS -70°C TO 200°C
- MAGNESIUM, TITANIUM AND ZIRCONIUM CONTENTS ARE < 2%.
- SERVICE TEMPERATURE RANGE : - 50 °C to +135 °C
- ALL DIMENSIONS ARE IN mm. UNLESS STATED OTHERWISE.
- SURFACE WILL PLAIN FINISH OR POWDER COATED.
- THE JUNCTION BOX WILL BE MARKED WITH

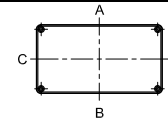


II 2 G Ex e IIC Gb
II 2 D Ex tb IIC Db IP 66 IP
0539
DEMKO 13 ATEX 1327771U
IECEx UL 13.0042U

10. TRADE MARK

11. TIGHTENING TORQUE - (2-3) NM

⚠ NOT TO BE REVISED WITHOUT NOTIFICATION TO THE EXCB/NOTIFIED BODY



Opening Detail (Size)	NO OF HOLES SIDE A/B	Min. Distance between the opening for Side A/B (mm)	NO OF HOLES SIDE C/D	Min. Distance between the opening for Side C/D (mm)	Opening Detail (Size) PG	NO OF HOLES SIDE A/B	Min. Distance between the opening for Side A/B (mm)	NO OF HOLES SIDE C/D	Min. Distance between the opening for Side C/D (mm)	Min. Distance of last opening from the enclosure end on side A/B (mm)	Min. Distance of last opening from the enclosure end on side C/D (mm)
M12	2	11	3	11	Pg.7	2	11	3	11	15	16
M16	2	11	3	11	Pg.9	2	11	3	11	15	16
M20	1	-	2	9	Pg.11	1	-	2	8	24	13
M25	1	-	1	-	Pg.13.5	1	-	2	9	25	17
M32	-	-	-	-	Pg.16	1	-	1	-	25	17
M40	-	-	-	-	Pg.21	-	-	-	-	-	-
M50	-	-	-	-	Pg.29	-	-	-	-	-	-
M63	-	-	-	-	Pg.36	-	-	-	-	-	-
-	-	-	-	-	Pg.42	-	-	-	-	-	-
-	-	-	-	-	Pg.48	-	-	-	-	-	-
-	-	-	-	-	-	-	-	-	-	-	-

NO.	REV.NO.	DESCRIPTION	DATE	DRAWN	CHECKED
QUANTITY	MATERIAL :-	MACH.NAME	DATE	SIGN	NAME
-	AISI12	-	17/02/14		RRPL DESIGN
	DIN230		17/02/14		MANOJ DRAWN
		TITLE :-	17/02/14		G.K. CHECKED
		JUNCTION BOX			J.B. APPROVED
		75 x 80 x 57			
TOLERANCE	WEIGHT	FINISH	SCALE	PARTNO.	
±0.2 DIMENSIONS	-	NATURAL	RAYCHEM RPG (P) LIMITED		
±0.2 HOLES	ALL DIMENSION ARE IN MM		CEAT Mahesh Amnave,	DRG. NO.	
±1.0° ANGLES	RJ 05		Dr. Anish Bessant Road,	REV	
			Wardl. Mumbai 400030	000	
			Web: www.raychemrpg.com	Ex-AJB-758057	

SR.NO.	PART NAME	DRAWING NO.	MATERIAL	TOOL NO.	QTY
5	SILICON GASKATE	-	SILICON	-	1
4	IB-EARTHING M4 SCREW	-	AISI 304 / AISI 316	-	4
3	IB-M4x20/7 SCREW	-	MS/304/316/COPPER	-	4
2	BASE JUNCTION BOX 75 X 80 X 57	Ex-R-758057-B	AISI 12	-	1-19 1
1	LID JUNCTION BOX 75 X 80 X 57	Ex-R-758057-L	AISI 12	-	1-20 1