



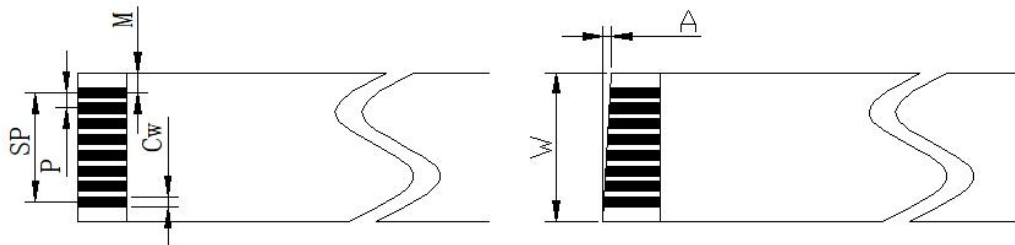
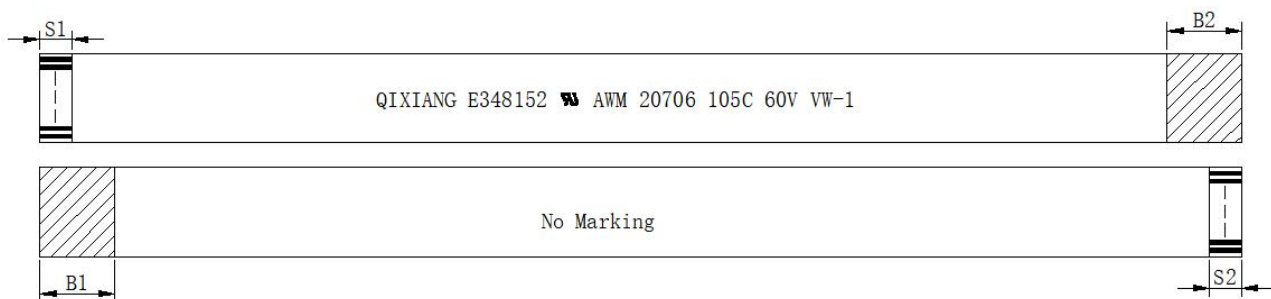
## Datasheet

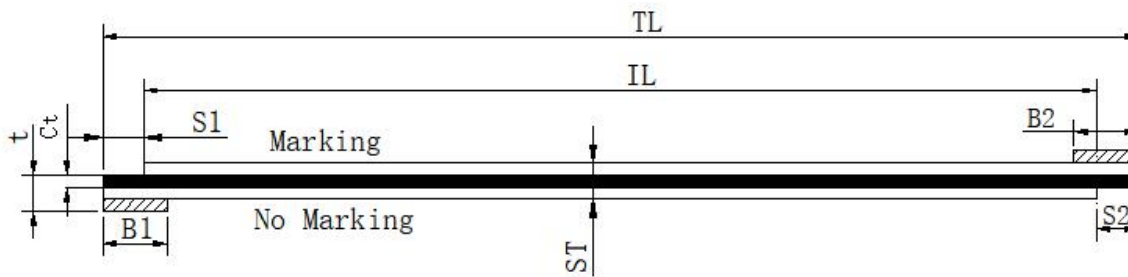
# RS PRO FFC 0.50mm Cable Type2 6pin

## 50mm

Stock number: 179-2527

EN





## Applications

These specifications are applied to Internal wiring of Class 2 circuits in electronic equipment .

**Reference Standard:** UL 20706,Appliance Wiring Material UL 758

**Cable Marking:** QIXIANG E348152 UL AWM 20706 105C 60V VW-1

## Electrical Performance

Rated voltage : 60V AC

Rated current : 500mA

Operating temperature range : -20°C to +105°C

Flammability Rating: VW-1

## Material Specification

Insulation Film: White,60um,105°C. Flame-retardant Polyester ROHS

Supporting Tape: Blue, T225um, Polyester LHF

Conductor coating: Tinned plated. Ct:0.05+/-0.01mm, Cw:0.3+/-0.03mm

## DIMENSION:

|                           |    |         |     |        |
|---------------------------|----|---------|-----|--------|
| Number of Conductors      | N  | 6       |     |        |
| Pitch                     | P  | 0.5mm   | +/- | 0.08mm |
| Total Length              | TL | 50mm    | +/- | 3.0mm  |
| Insulation length         | IL | 42mm    | +/- | 3.0mm  |
| Total Width               | W  | 3.5mm   | +/- | 0.15mm |
| Total Pitch               | SP | 2.5mm   | +/- | 0.15mm |
| Margin Width              | M  | 0.5mm   | +/- | 0.08mm |
| Terminal Thickness        | t  | 0.30mm  | +/- | 0.05mm |
| Insulation Thickness      | ST | 0.15mm  | +/- | 0.05mm |
| Strip Length              | S1 | 4.0mm   | +/- | 1.0mm  |
|                           | S2 | 4.0mm   | +/- | 1.0mm  |
| Supporting Tape Length    | B1 | 8.0mm   | +/- | 2.0mm  |
|                           | B2 | 8.0mm   | +/- | 2.0mm  |
| Tolerance of Cutting tilt | A  | <=0.5mm |     |        |