

HOUSE SERVICE CUT-OUT FUSE-LINKS

TYPE ME & MF

400/415 Volt House Service Cut-Out Fuse-Links to BS1361 • IEC60269-3

Rated voltage: 415V a.c. Fusing factor: not exceeding 1.5 (Class Q1) Rated breaking capacity: 33kA at 0.3 p.f. (tested at 80 kA at 0.15 p.f.)



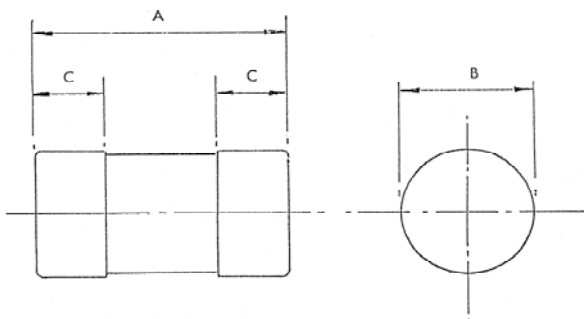
Lawson Type "ME" and "MF" fuse-links are for use in single or three-phase house service cut-outs or similar installations. The standardized BS 1361 breaking capacity of these fuse-links is 33kA at 0.3p.f. However to cater for increasing fault levels all Lawson house service cut-out fuse-links have been ASTA tested to 80kA at 0.15 p.f.

Current ratings and list references

BS1361 Type	Current Rating (A)	List Reference	Carton Quantity	Carton Weight (Kg)
IIa	5 (6)	ME5 (6)	10	0.55
	10	ME10		
	15 (16)	ME15 (16)		
	20	ME20		
	25	ME25		
	30 (32)	ME30 (32)		
	40	ME40		
	45	ME45		
	50	ME50		
	60 (63)	ME60 (63)		
	80	ME80		
100*	ME100			
IIb	20	MF20	10	1.06
	30 (32)	MF30 (32)		
	40	MF40		
	45	MF45		
	50	MF50		
	60(63)	MF60 (63)		
	80	MF80		
	100	MF100		

*ME100 harmonised current rating in accordance with IEC 60269-3
() Current rating in accordance with IEC 60269-3 & future BS88: Part 3

Dimensional Drawings



Type Reference	Dimensions (mm)		
	A	B	C
ME	57	22.23	16
MF	57	30.16	16

Note:

These fuse-links comply with the requirements of IEC 60269-3 which forms the basis of the future BS88: Part 3, superseding the present BS 1361.



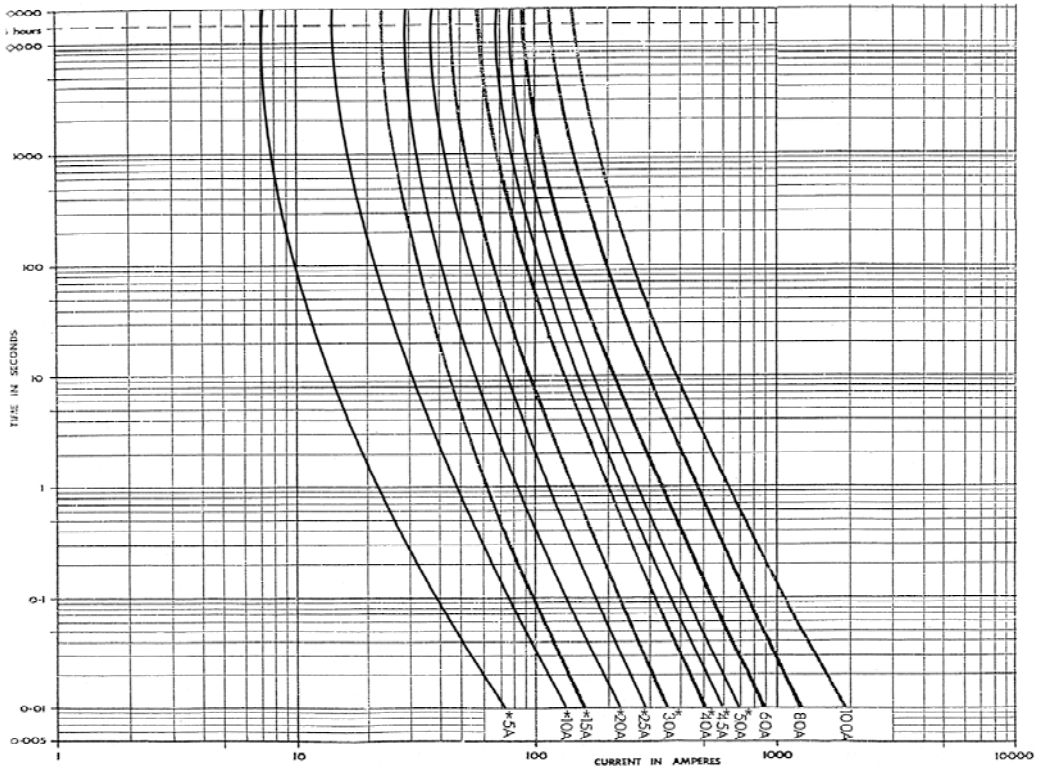
See page 27 for the time/current and cut-off current characteristics.



OPERATING CHARACTERISTICS

TYPE ME & MF

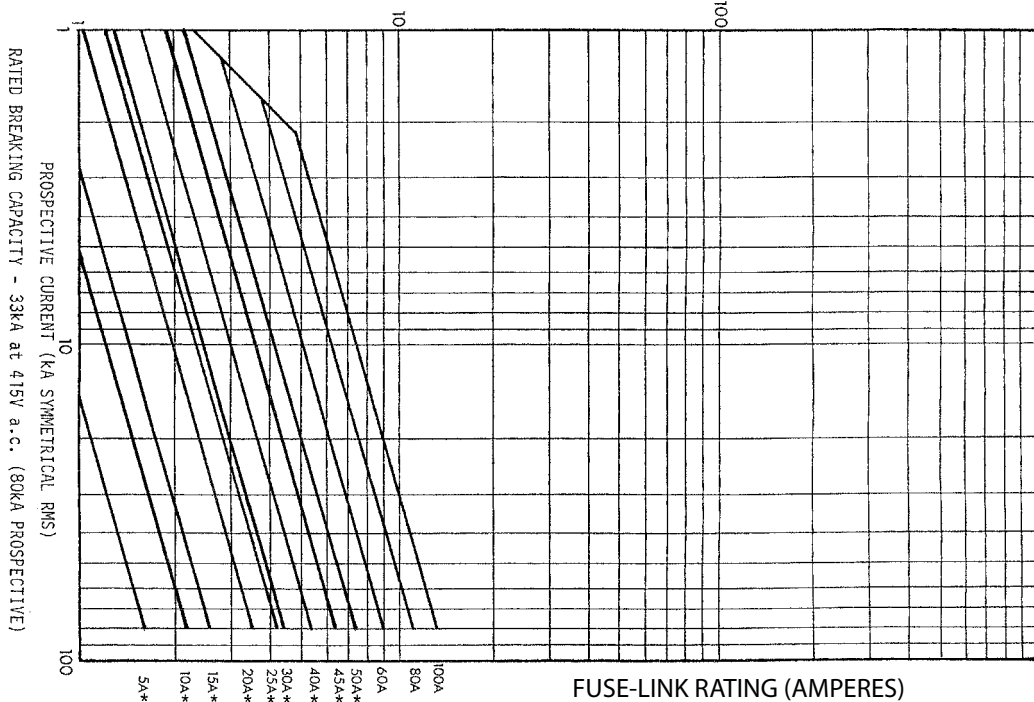
House Service Type ME & MF - Time/Current



* NON STANDARDIZED CURRENT RATINGS TO BS 1361:1971

Type ME & MF - Cut-Off Current

MAXIMUM VALUE OF CURRENT (kA PEAK)



* NON STANDARDIZED CURRENT RATINGS TO BS 1361:1971