



ENGLISH

Datasheet

RS PRO IP67 USB-C 3.1 – Plastic



The RS PRO waterproof USB-C series of plastic connectors are ruggedised connectors sealed to IP67 making them ideal for outdoor application in harsher environments. Designed to fit panel cut outs of 16mm the plastic USB-C series also come with rear potting on the panel mount connectors. This ensures your panel remains sealed to an IP67 rating even when the connector is unmated, and the sealing cap is not connected. The bayonet mating allows for quick and easy connection and disconnection while the Gold-plated contacts and USB Version 3.1 ensures super-fast 10Gbps data speeds.

Features & Benefits:

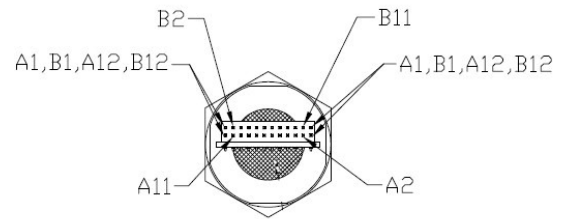
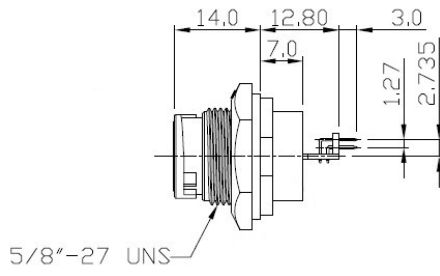
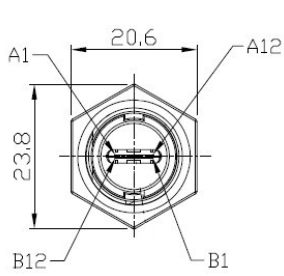
- Thermoplastic Housing
- IP67
- Rear-potted
- Bayonet Mating
- USB-C 3.1
- Speeds up to 10Gbps

Quality Standards

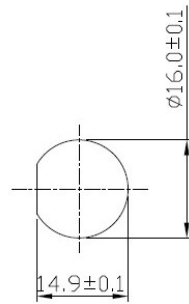


Dimensional line drawings

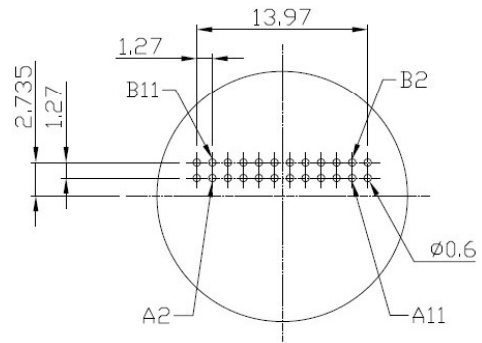
USB-C 3.1 Panel Mount with straight DIP 231-7892



Conn.



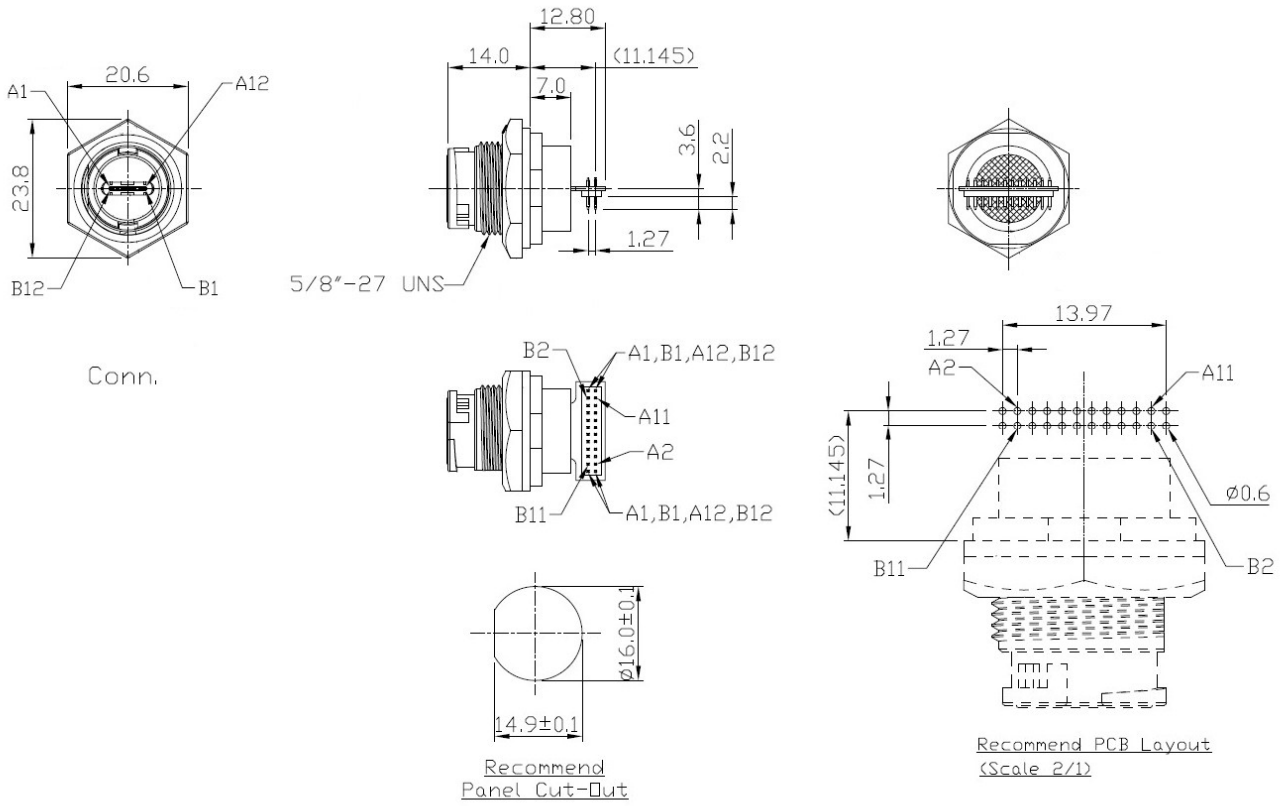
Recommend
Panel Cut-Out



Recommend PCB Layout
(Scale 2/1)

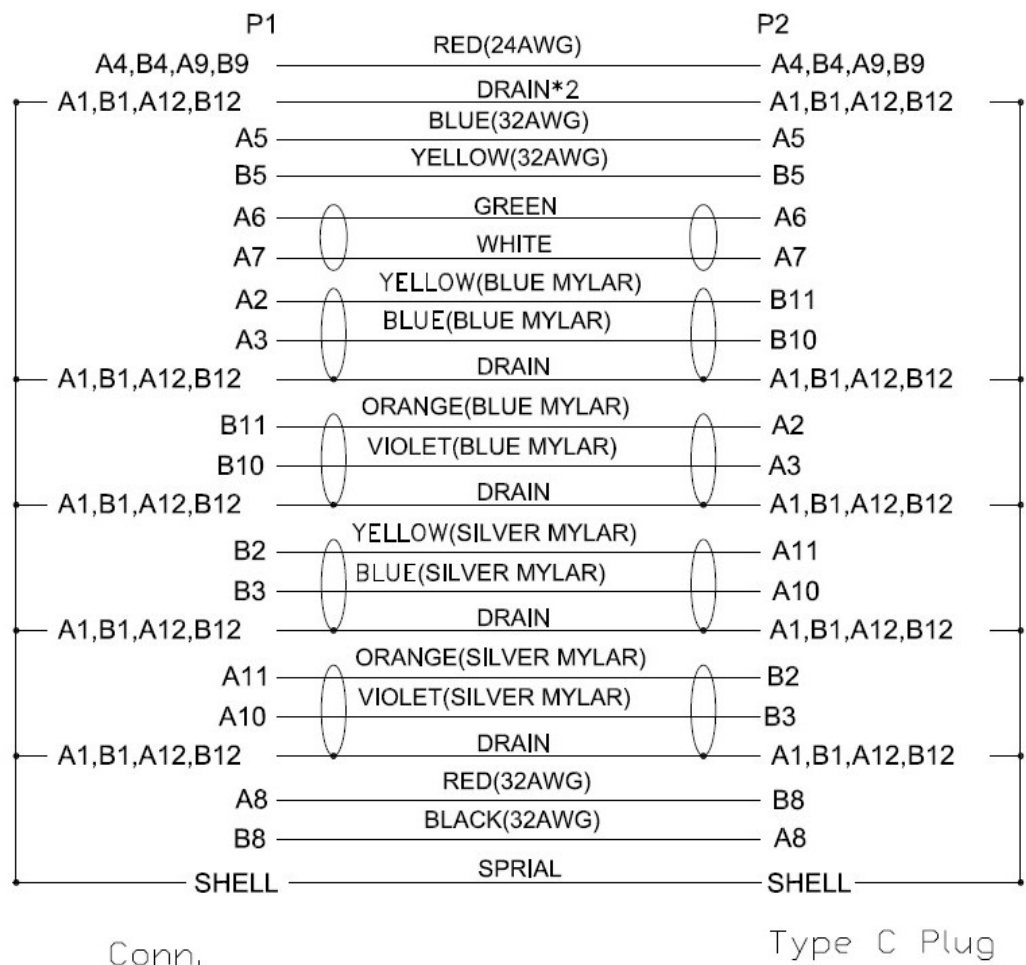
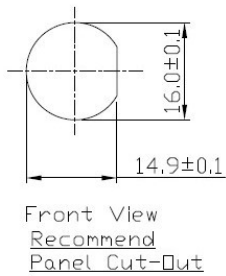
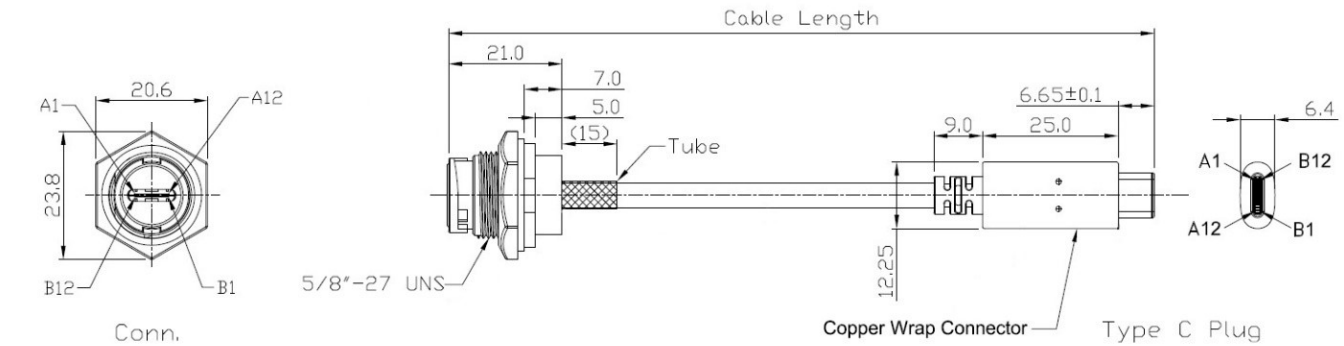
Dimensional line drawings

USB-C 3.1 Panel Mount with 90° DIP 231-7893



Dimensional line drawings

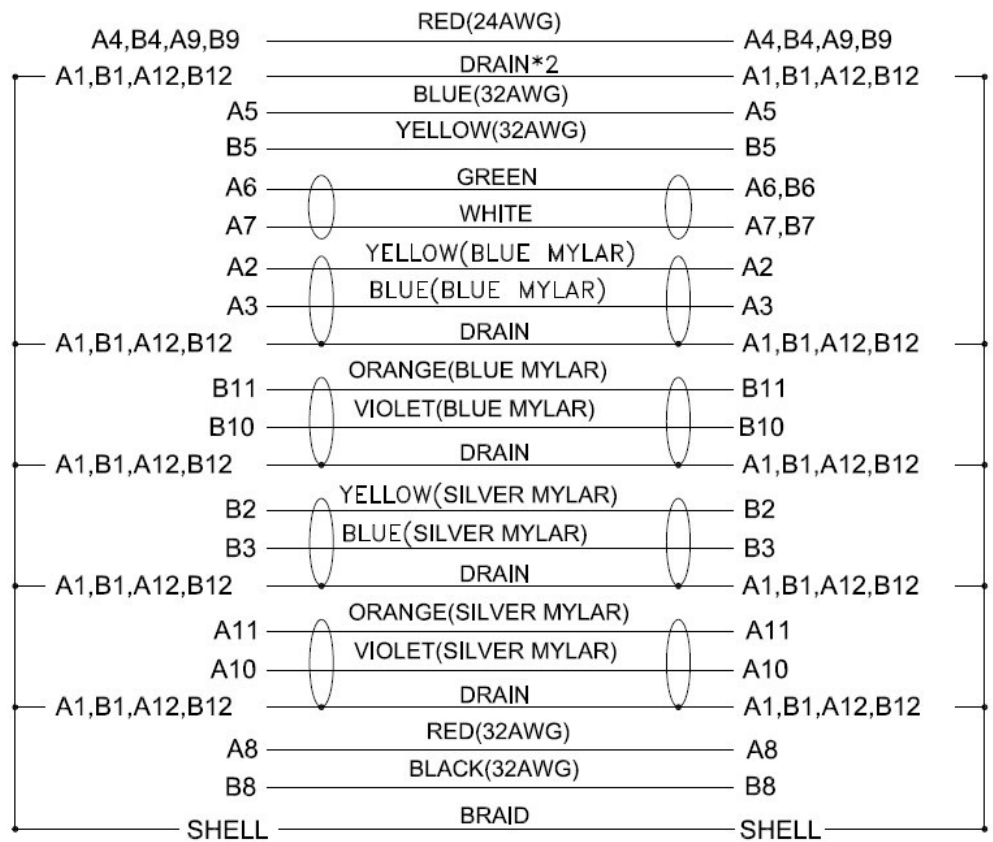
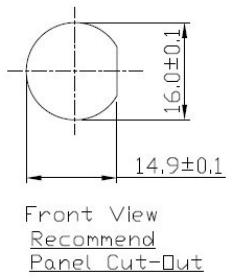
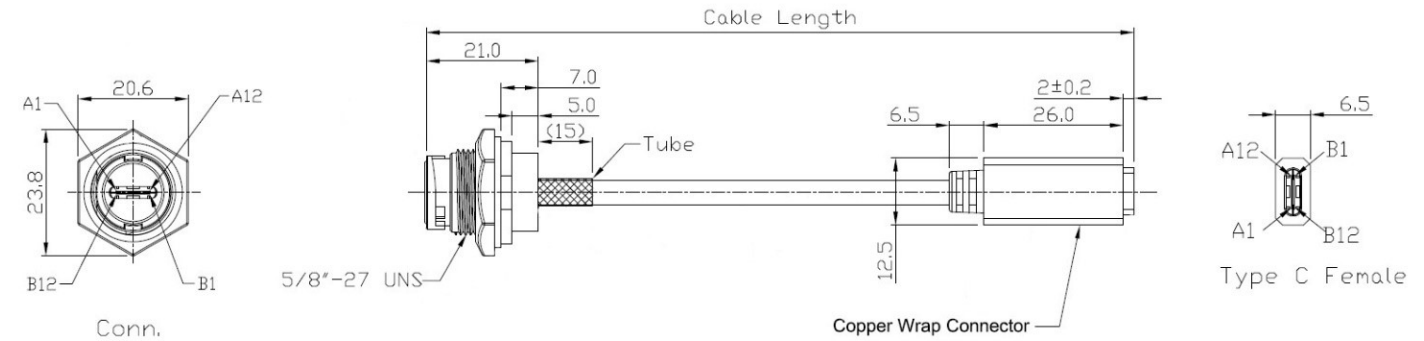
USB-C 3.1 Panel Mount with 300mm Cable and Type C Plug 231-7890



Wiring Diagram

Dimensional line drawings

USB-C 3.1 Panel Mount with 300mm Cable and Type C Socket 231-7891



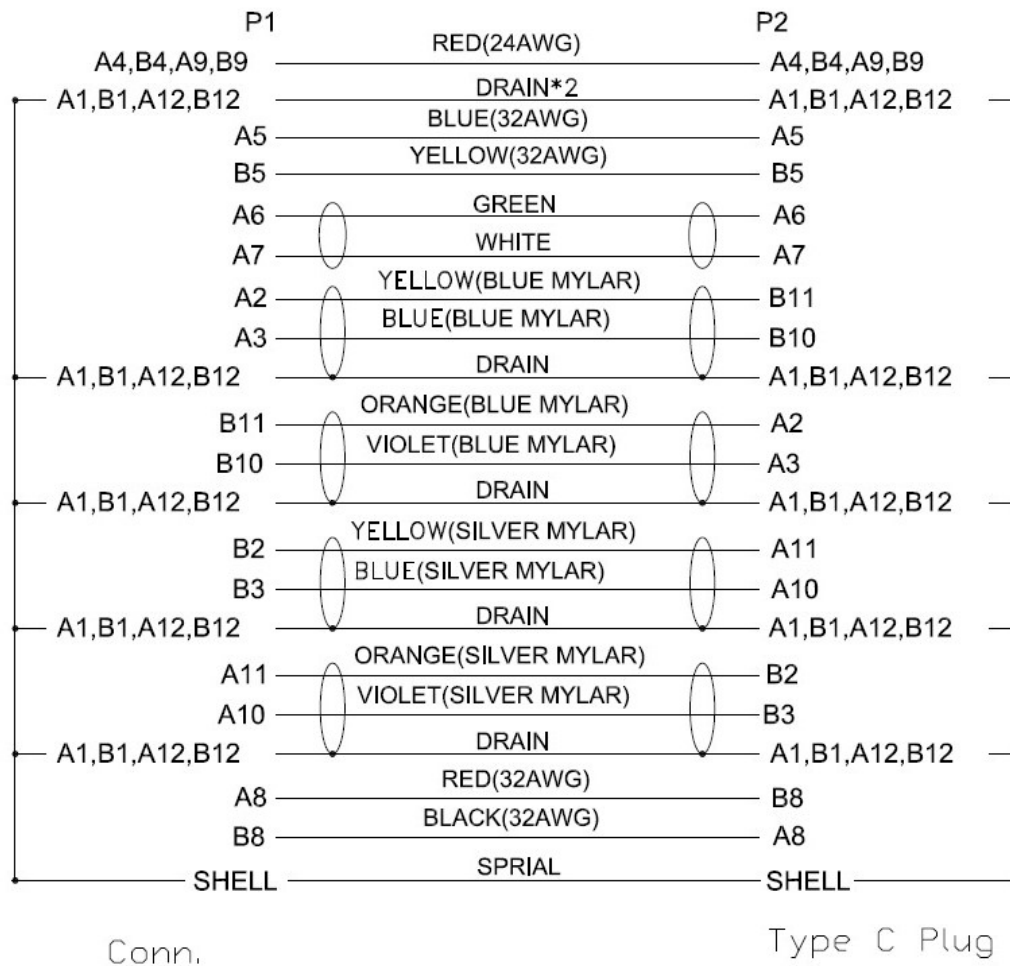
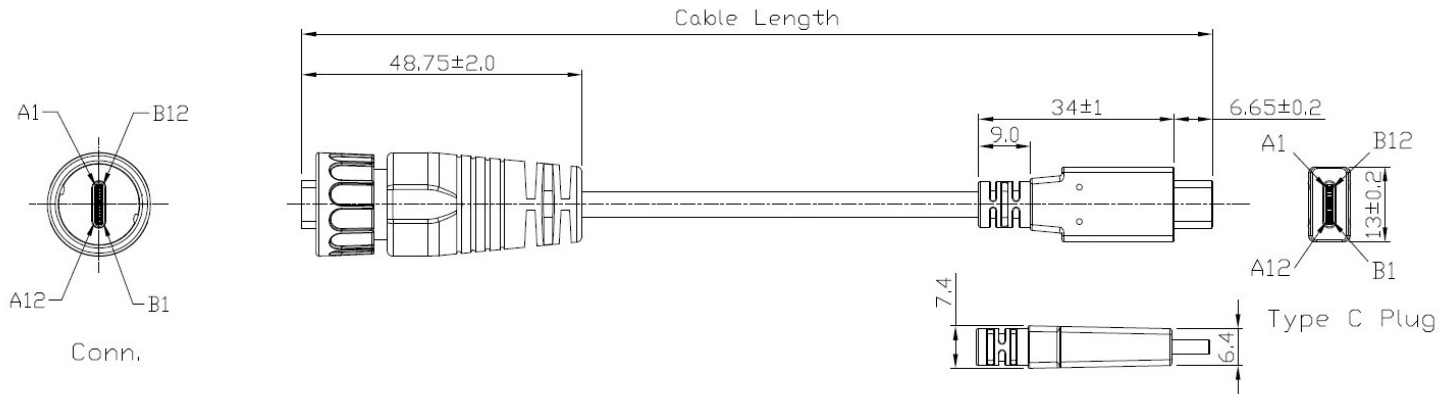
Conn.

Type C Female

Wiring Diagram

Dimensional line drawings

USB-C 3.1 Cable Mount Plug with 2m Cable and Type C Plug 231-7894



Conn.

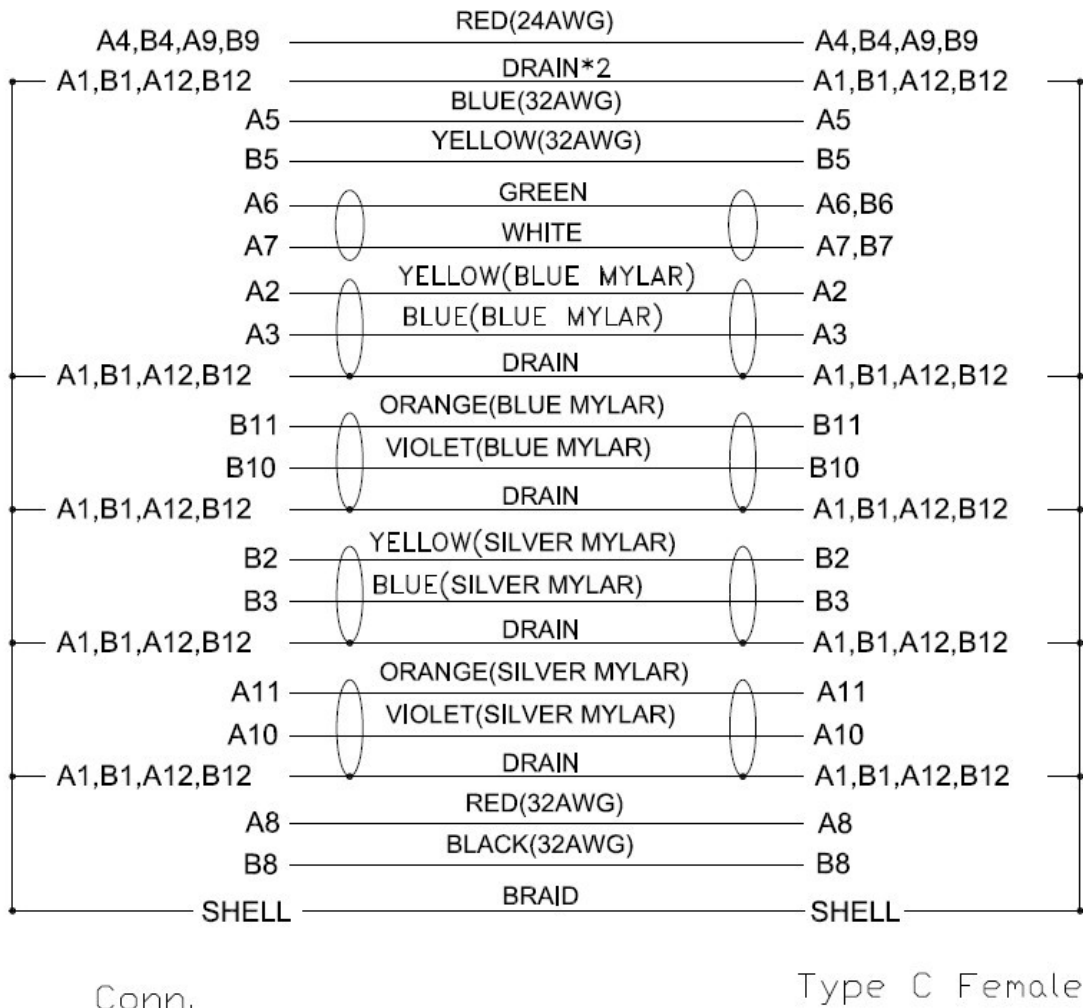
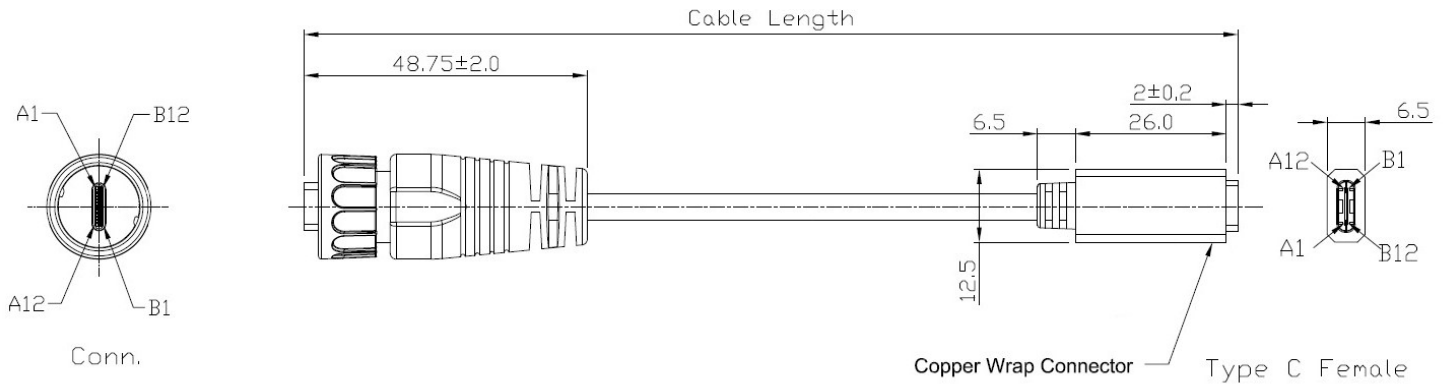
Type C Plug

Wiring Diagram

Dimensional line drawings

USB-C 3.1 Cable Mount Plug with 2m Cable and Type C Socket

231-7895



Wiring Diagram

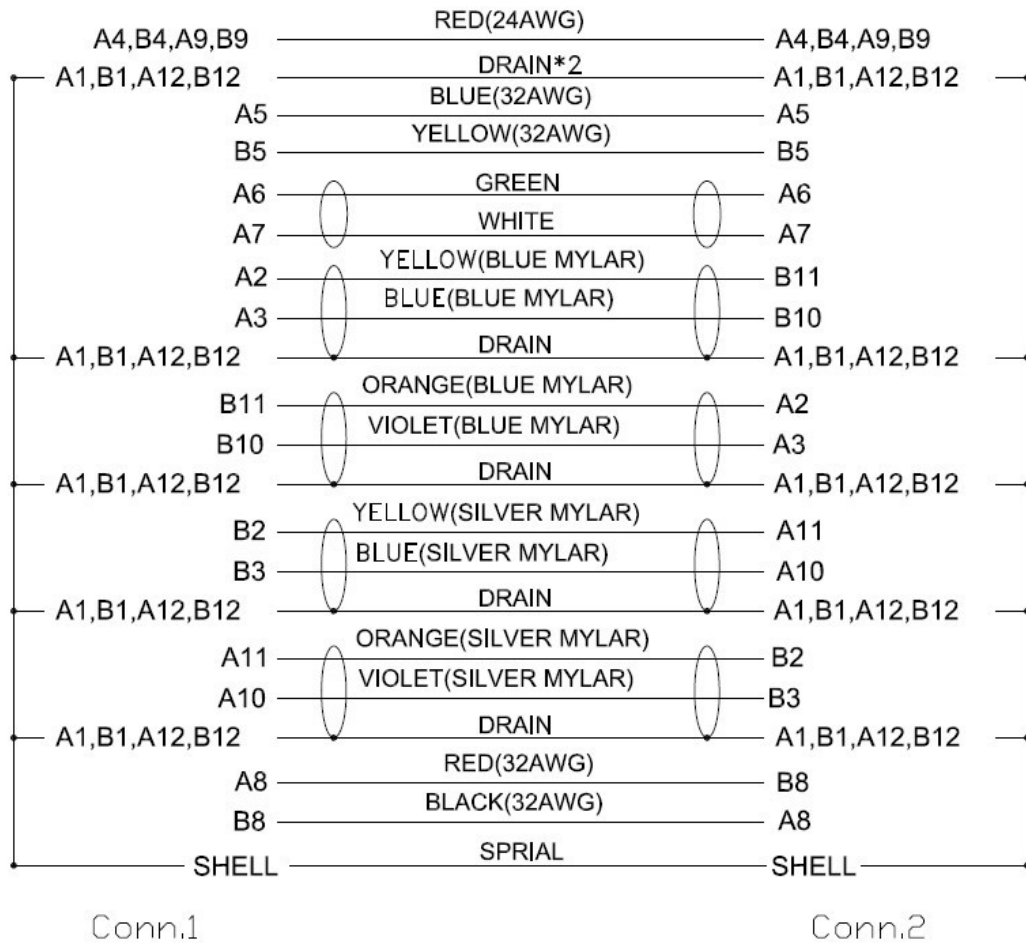
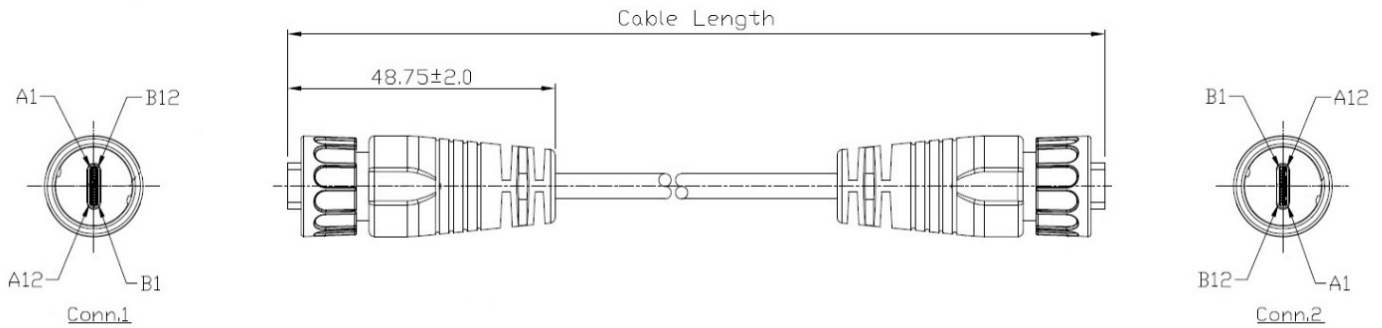
rspro.com



Dimensional line drawings

USB-C 3.1 Cable Mount Plug with 2m Cable to Cable Mount Plug

231-7896



Wiring Diagram