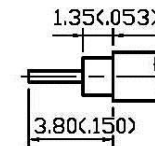
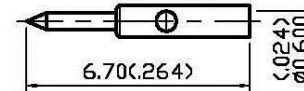
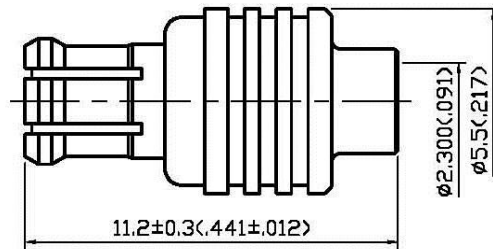


NO	DESCRIPTION	DATE
⚠	WORKING VOLTAGE → VOLTAGE RATING DEL PROOF VOLTAGE	07.23.14'



STRIPPING DIMENSION
SCALE 4:1

1.0 ELECTRICAL

- 1.1 FREQUENCY RANGE: DC-8 GHz
- 1.2 NOMINAL IMPEDANCE: 50 OHMS
- 1.3 VOLTAGE RATING: 335 VOLTS MAX. ⚠
- 1.4 VSWR: 1.22 MAX.

2.0 MATERIALS

- 2.1 BODIES: BRASS PER JIS-C3604
BERYLLIUM COPPER PER ASTM B196 UNS C17300
- 2.2 CENTER CONTACT: BRASS PER JIS-C3604
- 2.3 INSULATION: TEFLON PER ASTM D1457 AND ASTM D1710

3.0 FINISHES AND OTHERS

- 3.1 SEE BELOW TABLE FOR DETAILS.

4.0 MECHANICAL

- 4.1 INTERFACE IN ACCORDANCE WITH: CECC 22220
- 4.2 FOR USE WITH RG405 OR SIMILAR STYLE CABLE
- 4.3 CABLE ATTACHMENT: OUTER: SOLDER, INNER: SOLDER

5.0 ENVIRONMENTAL

- 5.1 OPERATING TEMPERATURE RANGE: -55° C TO +155° C

NO	DESCRIPTION	MATERIAL	Q'TY	FINISH
4	CENTER CONTACT	BRASS	1	GOLD 30 μ" MIN.
3	BODY	BRASS	1	GOLD 3 μ" MIN.
2	INSULATION	TEFLON	1	NONE
1	CHASSIS	BERYLLIUM COPPER	1	GOLD 3 μ" MIN.



APPROVED by _____ DATE: _____

DESCRIPTION		MCX STRAIGHT PLUG SOLDER		品名		27-01-6 T.G.G RG405		DATE	版次	REV.
製圖	DRAWN	TOLERANCE	.X ±0.2	TITLE	\ROHS COMPLIANT <50Ω		日期	05.05.06'	A-1	
檢圖	CHECK	.XX ±0.1	單位	mm(in)	DWG.NO.	27-0081				
認定	APPROVAL	.XXX ±0.05	比例	SCALE						
	Angela	ANGLE ±5°	6:1							