

FEATURES

- High performance design
- Performance Level 1
- RS232 standard interface
- Robust zinc plated steel shell
- Machined contacts
- UL 94V-0 insulator
- Flanges containing 3.05 mm mounting holes for screw mounting to a panel
- Solder cups for simple wire termination

RS PRO 25 Way Panel Mount D-sub Connector Plug, 2.77mm Pitch

RS Stock No.: 466-191



RS Professionally Approved Products bring to you professional quality parts across all product categories. Our product range has been tested by engineers and provides a comparable quality to the leading brands without paying a premium price.

Product Description

From RS PRO a high-performance D-Subminiature connector with a robust zinc plated steel shell and solder cup terminations that allow the easy connection of wires. These D-sub connectors are Performance Level 1 which exceeds DIN Class 2, have an RS232 standard interface and conform to BS9523 F0010 and F0018. The pins of this subminiature connector are machined to a high quality and feature flanges with pre-drilled 3.05mm diameter holes on either side for easy panel mounting. These d-sub connectors are ideal for use in for I/O (input/output) interconnections in a wide range of industrial and commercial applications.

General Specifications

| | |
|-------------------------------------|---|
| Number Of Contacts | 25 |
| Gender | Male |
| Body Orientation | Straight |
| Mounting Type | Panel Mount |
| D Connector | Standard D-Sub |
| D-Sub Shell Size | B |
| Termination Method | Solder |
| Housing Material | Steel |
| Contact Material | Copper Alloy |
| Contact Plating | Gold |
| Application | Computers, monitors and scanners, Networking and communications equipment; Data processing equipment, Industrial equipment, Test and measurement instrumentation, Remote Sensors and data loggers, Portable electric generation equipment |
| Performance Level | 1; 2 or 3 |
| Material Flammability Rating | UL94 V-0 |

Electrical Specifications

| | |
|------------------------------|-------------------------|
| Current Rating | 5.0A |
| Voltage Rating | 750V |
| Contact Resistance | 5x10 ³ ohms |
| Insulation Resistance | <5x10 ⁹ ohms |

Mechanical Specifications

| | |
|---------------------------|--|
| Pitch | 2.77mm |
| Wire Accommodation | <0.5mm ² (20AWG) |
| Individual Contact | 6 oz. (170.40 g) maximum insertion; 0.5 oz. (14.20 g) minimum withdrawal |

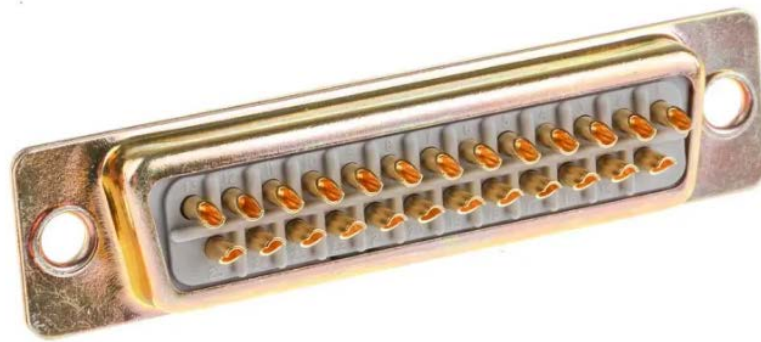
Operation Environment Specifications

| | |
|--------------------------------------|--------|
| Maximum Operating Temperature | +125°C |
| Minimum Operating Temperature | -55°C |

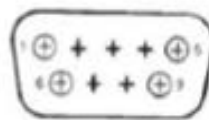
Approvals

| | |
|----------------------------------|--|
| Compliance/Certifications | BS9523 F0010 and F0018/MIL-C-24308, BS9523 F0018 and DIN 41652 |
|----------------------------------|--|

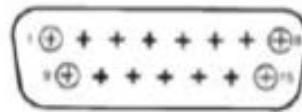




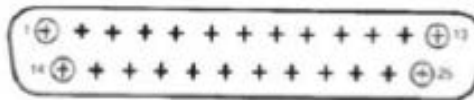
Standard Density Plug Inserts



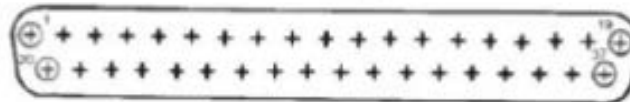
Shell Size E
(9 Position)



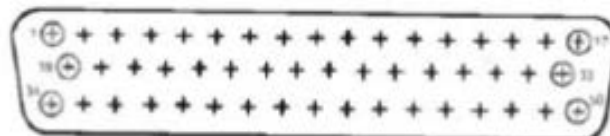
Shell Size A
(15 Position)



Shell Size B
(25 Position)

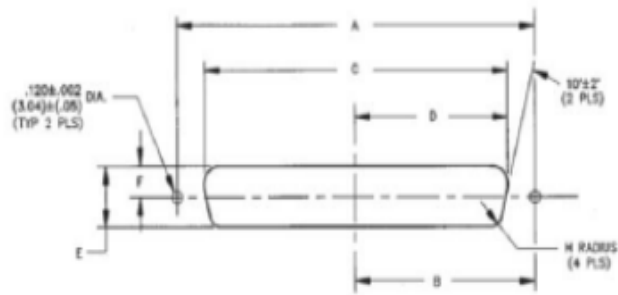


Shell Size C
(37 Position)



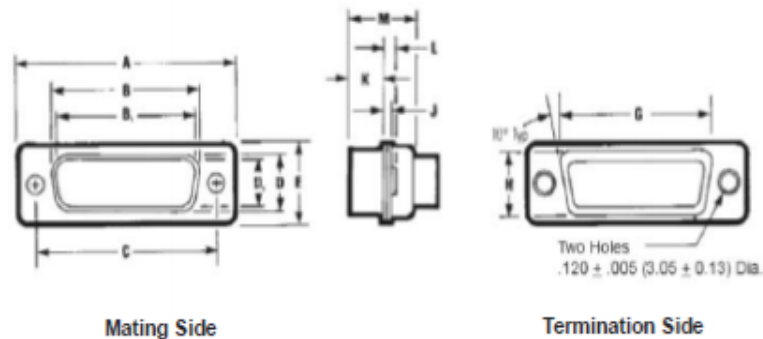
Shell Size D
(50 Position)

Panel Mounting Specifications



Dimensions

| Shell Size | Positions | Mounting Method | | A | | B | | C | | D | | E | | F | | H | | |
|------------|-----------|-------------------|------|-------|------|-------|------|-------|------|-------|------|-------|------|------|------|------|--|--|
| | | Front/ Rear Panel | in | mm | in | mm | in | mm | in | mm | in | mm | in | mm | in | mm | | |
| E | 9 | Front | 0.98 | 24.89 | 0.49 | 12.45 | 0.87 | 22.10 | 0.44 | 11.18 | 0.51 | 12.95 | 0.26 | 6.60 | 0.08 | 2.03 | | |
| | | Rear | 0.98 | 24.89 | 0.49 | 12.45 | 0.81 | 20.57 | 0.40 | 10.16 | 0.45 | 11.43 | 0.23 | 5.84 | 0.13 | 3.30 | | |
| A | 15 | Front | 1.31 | 33.27 | 0.66 | 16.76 | 1.10 | 27.94 | 0.60 | 15.24 | 0.51 | 12.95 | 0.26 | 6.60 | 0.08 | 2.03 | | |
| | | Rear | 1.31 | 33.27 | 0.66 | 16.76 | 1.13 | 28.70 | 0.57 | 14.48 | 0.45 | 11.43 | 0.23 | 5.84 | 0.13 | 3.30 | | |
| B | 25 | Front | 1.85 | 46.99 | 0.93 | 23.62 | 1.74 | 44.20 | 0.87 | 22.10 | 0.51 | 12.95 | 0.26 | 6.60 | 0.08 | 2.03 | | |
| | | Rear | 1.85 | 46.99 | 0.93 | 23.62 | 1.67 | 42.42 | 0.84 | 21.34 | 0.45 | 11.43 | 0.23 | 5.84 | 0.13 | 3.30 | | |
| C | 37 | Front | 2.50 | 63.50 | 1.25 | 31.75 | 2.39 | 60.71 | 1.20 | 30.48 | 0.51 | 12.95 | 0.26 | 6.60 | 0.08 | 2.03 | | |
| | | Rear | 2.50 | 63.50 | 1.25 | 31.75 | 2.33 | 59.18 | 1.16 | 29.46 | 0.45 | 11.43 | 0.23 | 5.84 | 0.13 | 3.30 | | |
| D | 50 | Front | 2.41 | 61.21 | 1.20 | 30.48 | 2.30 | 58.42 | 1.15 | 29.21 | 0.62 | 15.75 | 0.31 | 6.60 | 0.08 | 2.03 | | |
| | | Rear | 2.41 | 61.21 | 1.20 | 30.48 | 2.22 | 56.39 | 1.11 | 28.19 | 0.56 | 14.22 | 0.28 | 5.84 | 0.13 | 3.30 | | |



| Shell Size | Positions | Connector Type | A ± .015" (0.38mm) | | B ± .010" (0.25mm) | | B ₁ ± .005" (0.13 mm) | | C ± .005" (0.13mm) | | D ± .010" (0.25mm) | | D ₁ ± .010" (0.25mm) | | E ± .010" (0.25mm) | |
|------------|-----------|----------------|--------------------|-------|--------------------|-------|----------------------------------|-------|--------------------|-------|--------------------|-------|---------------------------------|-------|--------------------|-------|
| | | | in | mm | in | mm | in | mm | in | mm | in | mm | in | mm | in | mm |
| E | 9 | Plug | 1.213 | 30.81 | — | — | .666 | 16.90 | 0.984 | 24.99 | — | — | .329 | 8.40 | .494 | 12.55 |
| | | Socket | 1.213 | 30.81 | .640 | 16.26 | — | — | 0.984 | 24.99 | .308 | 7.82 | — | — | .494 | 12.55 |
| A | 15 | Plug | 1.541 | 39.14 | — | — | .994 | 25.30 | 1.312 | 33.32 | — | — | .329 | 8.40 | .494 | 12.55 |
| | | Socket | 1.541 | 39.14 | .968 | 24.59 | — | — | 1.312 | 33.32 | .308 | 7.82 | — | — | .494 | 12.55 |
| B | 25 | Plug | 2.088 | 53.04 | — | — | 1.534 | 39.00 | 1.852 | 47.04 | — | — | .329 | 8.40 | .494 | 12.55 |
| | | Socket | 2.088 | 53.04 | 1.508 | 38.30 | — | — | 1.852 | 47.04 | .308 | 7.82 | — | — | .494 | 12.55 |
| C | 37 | Plug | 2.729 | 69.32 | — | — | 2.182 | 55.40 | 2.500 | 63.50 | — | — | .329 | 8.40 | .494 | 12.55 |
| | | Socket | 2.729 | 69.32 | 2.156 | 54.76 | — | — | 2.500 | 63.50 | .308 | 7.82 | — | — | .494 | 12.55 |
| D | 50 | Plug | 2.635 | 66.93 | — | — | 2.079 | 52.80 | 2.406 | 61.11 | — | — | .436 | 11.07 | .605 | 15.37 |
| | | Socket | 2.635 | 66.93 | 2.062 | 52.34 | — | — | 2.406 | 61.11 | .420 | 10.67 | — | — | .605 | 15.37 |

| Shell Size | Positions | Connector Type | G ±.010" (0.25mm) | | H ±.010" (0.25mm) | | J ±.010" (0.25 mm) | | K ±.005" (0.25mm) | | L ±.010" (0.25mm) | | M ±.010" (0.25mm) | |
|------------|-----------|----------------|----------------------|-------|----------------------|-------|-----------------------|------|----------------------|------|----------------------|------|----------------------|-------|
| | | | in | mm | in | mm | in | mm | in | mm | in | mm | in | mm |
| E | 9 | Plug | .759 | 19.28 | .422 | 10.72 | .030 | 0.76 | .236 | 5.99 | .045 | 1.14 | .422 | 10.72 |
| | | Socket | .759 | 19.28 | .422 | 10.72 | .030 | 0.76 | .243 | 6.17 | .045 | 1.14 | .429 | 10.92 |
| A | 15 | Plug | 1.083 | 27.51 | .422 | 10.72 | .030 | 0.76 | .236 | 5.99 | .045 | 1.14 | .422 | 10.72 |
| | | Socket | 1.083 | 27.51 | .422 | 10.72 | .030 | 0.76 | .253 | 6.17 | .045 | 1.14 | .429 | 10.92 |
| B | 25 | Plug | 1.625 | 41.27 | .422 | 10.72 | .039 | 0.99 | .231 | 5.87 | .060 | 1.52 | .426 | 10.82 |
| | | Socket | 1.625 | 41.27 | .422 | 10.72 | .030 | 0.76 | .243 | 6.17 | .045 | 1.14 | .429 | 10.92 |
| C | 37 | Plug | 2.272 | 57.71 | .422 | 10.72 | .039 | 0.99 | .231 | 5.87 | .060 | 1.52 | .426 | 10.82 |
| | | Socket | 2.272 | 57.71 | .422 | 10.72 | .030 | 0.76 | .243 | 6.17 | .045 | 1.14 | .429 | 10.92 |
| D | 50 | Plug | 2.178 | 55.32 | .534 | 13.56 | .039 | 0.99 | .231 | 5.87 | .060 | 1.52 | .426 | 10.82 |
| | | Socket | 2.178 | 55.32 | .534 | 13.56 | .030 | 0.76 | .243 | 6.17 | .045 | 1.14 | .429 | 10.92 |

B and D are outside dimensions for socket. D and B are inside dimensions for plug.