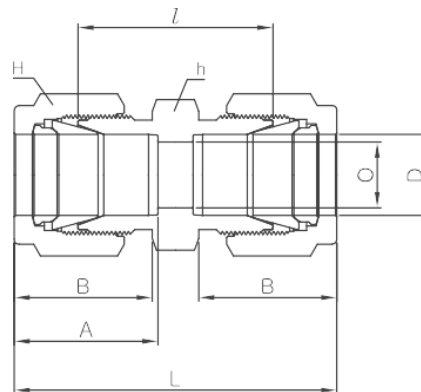
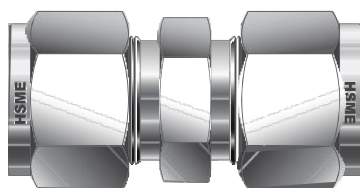


**Straight Union**
**AU**

**Connects fractional tube**

Part No.	Tube O.D.		O Min.	Width across flat				A	B	I	L
	D			h		H					
	in	mm		in	mm	in	mm				
AU-1	1/16	1.59	1.27	5/16	7.93	5/16	7.93	8.63	10.92	17.50	25.15
AU-2	1/8	3.17	2.28	7/16	11.11	7/16	11.11	12.70	15.24	22.35	35.56
AU-3	3/16	4.76	3.04	7/16	11.11	1/2	12.70	13.71	16.00	24.13	37.33
AU-4	1/4	6.35	4.82	1/2	12.70	9/16	14.28	15.24	17.78	26.16	40.89
AU-5	5/16	7.93	6.35	9/16	14.28	5/8	15.87	16.25	18.54	28.19	42.92
AU-6	3/8	9.52	7.11	5/8	15.87	11/16	17.46	16.76	19.30	30.22	44.95
AU-8	1/2	12.70	10.41	13/16	20.64	7/8	22.22	22.86	21.84	30.98	51.30
AU-10	5/8	15.87	12.70	15/16	23.81	1	25.40	24.38	21.84	31.75	52.07
AU-12	3/4	19.05	15.74	1-1/16	26.98	1-1/8	28.58	24.38	21.84	33.27	53.59
AU-14	7/8	22.22	18.28	1-3/16	30.16	1-1/4	31.75	25.90	21.84	35.05	55.37
AU-16	1	25.40	22.35	1-3/8	34.92	1-1/2	38.10	31.24	26.41	40.38	64.77
AU-20	1-1/4	31.75	27.68	1-3/4	44.45	1-7/8	47.63	41.14	38.86	48.00	92.20
AU-24	1-1/2	38.10	34.03	2-1/8	53.97	2-1/4	57.15	50.03	45.21	53.60	107.95
AU-32	2	50.80	45.97	2-3/4	69.85	3	76.20	67.56	62.73	74.70	149.35

**Connects metric tube**

Part No.	Tube O.D. D	O Min.	Width across flat		A	B	I	L
			h	H				
AU-2M	2	1.7	12	12	12.9	15.3	22.4	35.6
AU-3M	3	2.4	12	12	12.9	15.3	22.1	35.3
AU-4M	4	2.4	12	12	13.7	16.1	24.1	37.3
AU-6M	6	4.8	14	14	15.3	17.7	26.2	41.0
AU-8M	8	6.4	15	16	16.2	18.6	28.2	43.2
AU-10M	10	7.9	18	19	17.2	19.5	31.0	46.2
AU-12M	12	9.5	22	22	22.8	22.0	31.0	51.2
AU-15M	15	11.9	24	25	24.4	22.0	31.8	52.0
AU-16M	16	12.7	24	25	24.4	22.0	31.8	52.0
AU-18M	18	15.1	27	30	24.4	22.0	33.3	53.5
AU-20M	20	15.9	30	32	26.0	22.0	34.8	55.0
AU-22M	22	18.3	30	32	26.0	22.0	34.8	55.0
AU-25M	25	21.8	35	38	31.3	26.5	40.4	65.0
AU-28M	28	21.8	41	46	36.6	36.6	43.4	85.0
AU-32M	32	28.6	46	50	42.0	41.6	51.3	97.3
AU-38M	38	33.7	55	60	49.4	47.9	58.4	113.6
AU-42M	42	36.8	60	65	49.3	47.8	58.4	113.4
AU-50M	50	45.2	70	76	65.0	60.2	74.7	146.0