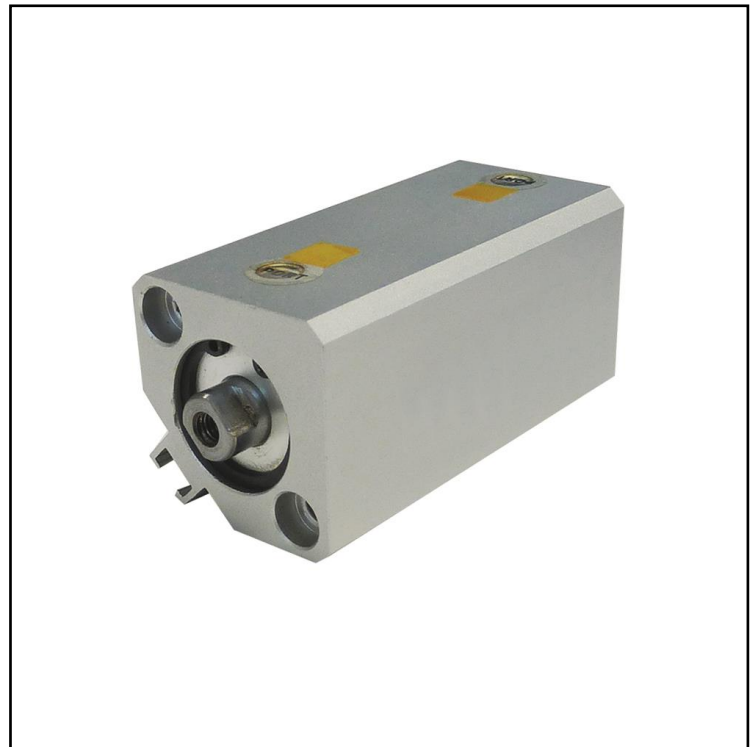


FEATURES

- All dynamic seals from Japan, with German grease for longer life
- Strong self-lubricating bronze bearings for high lateral loading performance
- Piston rod and rod connection is rotary riveted for high concentricity
- Rear cover and body are riveted together for reliability

RS PRO Compact Diamond Profile Cylinder

RS Stock No.: 2351275



Product Description

Part No.	Bore	Stroke
2351275	25 mm	10 mm

Features

- All dynamic seals from Japan, with German grease for longer life
- Strong self-lubricating bronze bearings for high lateral loading performance
- Piston rod and rod connection is rotary riveted for high concentricity
- Rear cover and body are riveted together for reliability

General Specifications

Cylinder type	Double acting, magnetic positioning
Max. working pressure	10 bar
Operating temperature	-20°C to +80°C (dry air)
Bore size	25 mm
Stroke length	10 mm
Cushion type	Anti-bump cushioning
Mounting type	Through hole mounting

Similar Products

Part No.	Bore	Stroke
2351276	32 mm	50 mm