

# PRODUCT DATASHEET

## HE CHIP CONTR 28 W/62

LUMILUX CHIP control T5 | Tubular fluorescent lamps 16 mm, yellow, with G5 base



---

### AREAS OF APPLICATION

- Microchip fabrication plants
- Where UV and blue components have to be reduced to the absolute minimum
- Industry
- Print shops

---

### PRODUCT BENEFITS

- Excellent UV filter
- The life of the sleeve is the same as the average lamp life

---

### PRODUCT FEATURES

- Excellent filter at 500 nm
- Long average lifetime: up to 24,000 h (with QUICKTRONIC ECG)
- Dimmable



**TECHNICAL DATA**

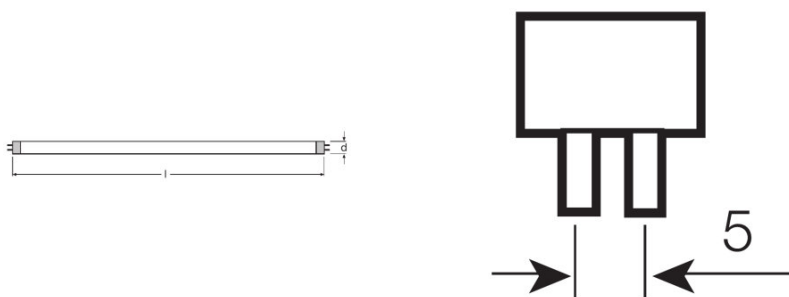
Electrical data

|                                     |   |
|-------------------------------------|---|
| Rated lamp efficacy (HF data 25 °C) | Under clarification by authority and standardization body |
| Rated wattage                       | 27.90 W   |
| Nominal wattage                     | 28.00 W   |

Photometrical data

|                           |         |
|---------------------------|---------|
| Rated luminous flux       | 1600 lm |
| Luminous flux at 25 °C    | 1830 lm |
| Luminous flux at 35 °C    | 2040 lm |
| Light color               | 62      |
| Nominal luminous flux     | 1600 lm |
| Light color (designation) | Yellow  |
| Rated LLMF at 2,000 h     | 0.95    |
| Rated LLMF at 4,000 h     | 0.93    |
| Rated LLMF at 6,000 h     | 0.92    |
| Rated LLMF at 8,000 h     | 0.90    |
| Rated LLMF at 12,000 h    | 0.90    |
| Rated LLMF at 16,000 h    | 0.90    |
| Rated LLMF at 20,000 h    | 0.89    |
| Luminous flux             | 1600 lm |

Dimensions & weight



|   |            |
|---|------------|
| Tube diameter                               | 16 mm      |
| Length                                      | 1149 mm    |
| Length with base excl. base pins/connection | 1149.00 mm |
| Diameter                                    | 16.0 mm    |
| Maximum diameter                            | 16.0 mm    |

## Temperatures &amp; operating conditions

|  |         |
|--|---------|
| Rated ambient temp.w.max.luminous flux | 35.0 °C |
|--|---------|

## Lifespan

|  |                       |
|--|-----------------------|
| Service life                           | 19000 h <sup>1)</sup> |
| Lifespan                               | 24000 h <sup>1)</sup> |
| Rated lamp survival factor at 2,000 h  | 0.99                  |
| Rated lamp survival factor at 4,000 h  | 0.99                  |
| Rated lamp survival factor at 6,000 h  | 0.99                  |
| Rated lamp survival factor at 8,000 h  | 0.99                  |
| Rated lamp survival factor at 12,000 h | 0.99                  |
| Rated lamp survival factor at 16,000 h | 0.97                  |
| Rated lamp survival factor at 20,000 h | 0.85                  |
| Operation mode LLMF/LSF                | HF                    |
| Rated lamp life time                   | 24000 h               |
| Nominal lamp life time                 | 24000 h               |

<sup>1)</sup> With preheat ECG

## Additional product data

|                             |  |
|-----------------------------|--|
| Base (standard designation) | G5   |
| Mercury content             | 1.9 mg   |
| Show WEEE picto             | Yes  |
| Product remark              | Suitable for ECG operation only/Lamp designed for internal luminaire temperatures of 30...40 °C; optimum luminous flux achieved at 35 °C |

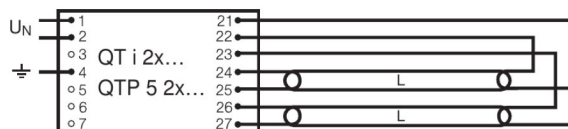
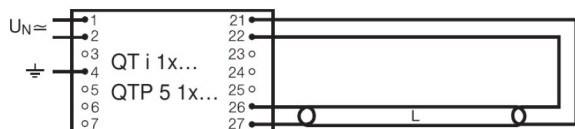
## Capabilities

|                     |     |
|---------------------|-----|
| Suitable for indoor | Yes |
|---------------------|-----|

## Certificates &amp; standards

|                         |              |
|-------------------------|--------------|
| Energy efficiency class | A            |
| Energy consumption      | 31 kWh/1000h |

Wiring Diagram



Wiring diagram

Wiring diagram

SYSTEM GUARANTEE

- OSRAM System+ Guarantee in combination with OSRAM ECGs

EQUIPMENT / ACCESSORIES

- Suitable for operation on electronic and conventional control gears

SAFETY ADVICE

Lamps with plastic sleeves, ambient temperature range: -10...+80 °C

Lamps with plastic sleeves, maximum shelf life: 5 years at 0...30 °C

Lamps with plastic sleeves must be replaced after average lifetime (B50) has been reached

In case of lamp breakage: [www.ledvance.com/brokenlamp](http://www.ledvance.com/brokenlamp)

Under standard conditions acc. IEC (free burning, 25 - 40°C ambient temperature) a typical increase of the emitted radiation power in the wavelength range < 500 nm up to 6 mW/klm per 10,000 hours of operation was determined. This corresponds to approx. 0.2% of the total emitted radiation power. This increase depends on the operation conditions.

For example for a T5 HO lamp at 80°C ambient temperature an increase of the emitted radiation power in the wavelength range < 500 nm of up to 50 mW/klm per 10,000 hours of operation can be observed. This corresponds to approx. 2% of the total emitted radiation power.

For applications in photo sensitive areas, routine maintenance is necessary. This must include verification of the amount of short wavelength light emitted, and, if required, lamp replacement.

LOGISTICAL DATA

| Product code  | Packaging unit (Pieces/Unit) | Dimensions (length x width x height) | Gross weight | Volume               |
|---------------|------------------------------|--------------------------------------|--------------|----------------------|
| 4008321233424 | Unpacked<br>1                | 1160 mm x 17 mm x 23 mm              | 151.00 g     | 0.45 dm <sup>3</sup> |
| 4008321233431 | Shipping carton box<br>10    | 1192 mm x 92 mm x 43 mm              | 1711.00 g    | 4.72 dm <sup>3</sup> |

The mentioned product code describes the smallest quantity unit which can be ordered. One shipping unit can contain one or more single products. When placing an order, for the quantity please enter single or multiples of a shipping unit.

---

#### REFERENCES / LINKS

For more information on the system guarantee and the terms and conditions of the guarantee visit

▶ [www.ledvance.com/system-guarantee](http://www.ledvance.com/system-guarantee)

---

#### DISCLAIMER

Subject to change without notice. Errors and omission excepted. Always make sure to use the most recent release.