

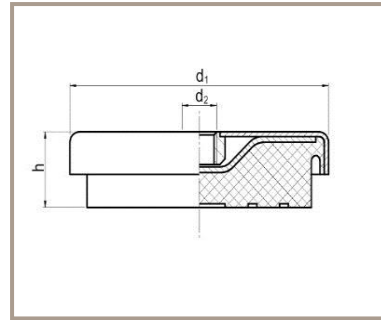


ENGLISH

HEIGHT ADJUSTABLE FOOT

ELASTOMER : NATURAL RUBBER, NR WITH ZINC PLATED MILD STEEL METAL

- Operation temperature -40 - +80 °C
- Direct contact of the rubber with oils, alkalines, acids must be avoided
- Other elastomers like CR, NBR and Silicone Elastomers may be available on special request



RS Part No	Product Number	Metal Type	d ₁ (mm)	h (mm)	d ₂	Load (kg)
1623264	PA20045M20-2	Mild Steel	200	45 - 60	M20	3,000
1623260	PA8025M10-A4-2	Stainless Steel	80	25 - 35	M10	300
1623261	PA15040M16-2	Mild Steel	150	40 - 52	M16	1,000

Applications:

Suitable for high to Low Frequencies: - Lathes, CNC Milling Machines, Presses etc.

PRIOR TO
LEVELLING

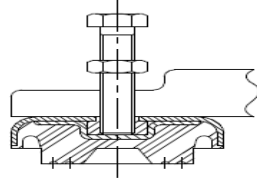


Figure 1

AFTER
LEVELLING

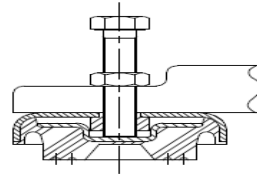


Figure 2

If inserted, the adjusting screw should be removed, and the machine positioned on top of the mountings. The adjusting screw should then be inserted until it is touching as shown in figure 1, with the nut clear above the top of the machine base. Check the level of the machine and at the lowest point(s) screw the adjusting screw further into the mounting(s) until the machine is level. Then tighten the nuts down to the top of the machine foot for all mountings, as shown in Figure 2.