

Datasheet

Time Lag Ceramic Tube Fuse, 0.5-1A, 5x20mm

Stock No: 1778057, 1778058

RS Pro



Specifications:

Materials

Tube (Body): Non-Transparent ceramic tube fuse. No breaking or deformation is allowed.

Two brass end caps: Made of brass of good conductivity.

Coating of brass caps: Plating the surface with nickel. If the indication is added with "S", it needs to be plated with silver.

Interrupting Ratings

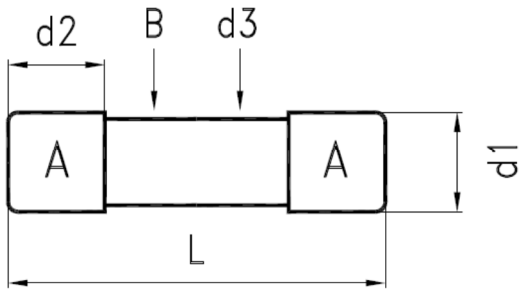
500mA~12A : 1500 amperes at 250V AC

Operating Temperature

-55°C to +125°C

Drawing (mm):

ENGLISH



NO.	Part Name		Volume
A	Brass Cap	Nickel Plating	2
B	Ceramic Tube	Non-Transparent Ceramic Tube	1
d1	Dia. of Cap	5.2 ^{+0.1} _{-0.2}	
d2	Height of Cap	5.25±0.1mm	
d3	Dia. of Ceramic	4.50±0.2 mm	
L	Body of Fuse	20.00±0.5mm	

Electrical Characteristic:

Rating	150% Rating		210% Rating		275% Rating		400% Rating		1000% Rating	
	Min.	Max.	Min.	Max.	Min.	Max.	Min.	Max.	Min.	Max.
500mA~800mA	60 min			30 min	250 ms	80 sec	50 ms	5 sec	5 ms	150 ms
1A~3.15A	60 min			30 min	750 ms	80 sec	95 ms	5 sec	10 ms	150 ms

Ampere Rating	Nominal Resistance Cold Ohms Range	Nominal Melting I ² t A ² Sec
0.5 A	0.1593-0.2959	0.729
1 A	0.0511-0.0949	6.5570



ENGLISH

Reference:

Stock No	Rating amperes
1778058	0.5A 250V
1778057	1A 250V