



ENGLISH

Datasheet

Static Dissipative Lab Coat



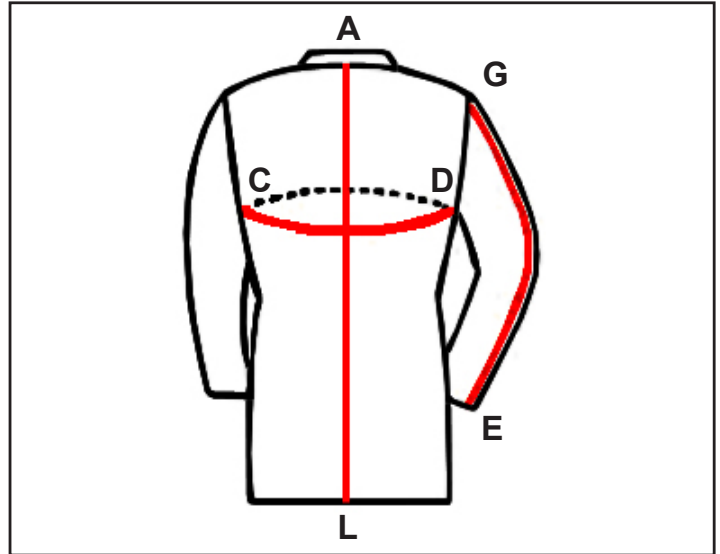
Figure 1. RS Static Dissipative Lab Coat

Description

RS Static Dissipative Lab Coats meet the required limit Rp-p less than 1×10^{12} ohms in EN 61340-5-1 tested per ANSI/ESD STM2.1.

“The ESD risk provided by everyday clothing cannot be easily assessed. The current general view of experts is that the main source of ESD risk may occur where ESDS [ESD sensitive items] can reach high induced voltage due to external fields from the clothing, and subsequently experience a field induced CDM [Charged Device Model] type discharge. So ESD control garments may be of particular benefit where larger ESDS having low CDM withstand voltage are handled, and operators habitually wear everyday clothing that could generate electrostatic high fields.” [CLC TR 61340-5-2 User guide Garments sub-clause 4.7.7.1 Introductory remarks]

Sizes and Measurements



Part #	Size*	Shoulders (cm)	C-D (cm)	A-L (cm)	G-E (cm)
789-8084	S	42	114	88	56
789-8087	M	43	116	92	58
789-8081	L	45	120	94	59
789-8090	XL	48	126	96	61
789-8093	XXL	51	130	99	62

Please note that measurements are in cm and are an indication only.

Measurements equal average sizes and can be subject to change without notice

*Unisex Fit Both for Men and Women



Main features:

- Lightweight, comfortable and breathable material
- Composition: Cotton, polyester and conductive fibres
- 2 side pockets and 1 breast pocket
- Unisex sizes from XS to XXL (see table)
- ESD protective symbol on breast pocket
- Quick opening and closing snap
- Buttons are not exposed (covered by overlap); with back pleats
- Meets required limit of EN 61340-5-1 Rp-p < 1 x 10¹¹ ohms tested per ANSI/ESD STM2.1
- Optimized width of conductive grid
- Machine washable (40°C); resistant to repeat washing cycles

- Coats are CE certified
- Standard colour: white
- Custom colours available
- Company logo (embroidered or printed) available on request

Washing Instructions

The conductive fibres are sensitive to heat, alkali, acids, fabric softeners and bleaches.

We recommend:

- Wash in hot/warm water (max. 40°C) using a neutral detergent
- Do not use fabric softeners or bleach; do not dry clean
- Tumble-dry at maximum temperature of 50°C
- Generally no ironing required; if required, iron at medium temperature.

Technical Properties:

Composition (nominal)	
Cotton	34%
Polyester	64%
Conductive Fibres	2%
Weight	146 g/m ²
Washing Instructions	
Washing	Machine washable up to 40°C
Ironing	Ironing temperature up to 150°C
Bleaching	Do not bleach
Dry cleaning	Dry clean (normal treatment)
Tumble Drying	Low drying temperature
Surface Resistivity	
Test Voltage	100V
Surface Resistance Rs	< 5 x 10 ¹⁰ ohms