



## Main

Product or component type	Dv/dt filter
Range compatibility	Altivar&Nbsp;Process ATV900 Easy Altivar 610 Altivar&Nbsp;Process ATV600 Altivar Machine ATV340
Product specific application	Output filter
[In] rated current	15 A
Product compatibility	ATV630 variable speed drive wall mount - 3 kW, 380...480 V ATV630 variable speed drive wall mount - 4 kW, 380...480 V ATV630 variable speed drive wall mount - 5.5 kW, 380...480 V ATV630 variable speed drive wall mount - 1.5 kW, 200...240 V ATV630 variable speed drive wall mount - 2.2 kW, 200...240 V ATV630 variable speed drive wall mount - 3 kW, 200...240 V ATV650 variable speed drive wall mount - 3 kW, 380...480 V ATV650 variable speed drive wall mount - 4 kW, 380...480 V ATV650 variable speed drive wall mount - 5.5 kW, 380...480 V ATV610 variable speed drive - 3 kW, 380...415 V ATV610 variable speed drive - 4 kW, 380...415 V ATV610 variable speed drive - 5.5 kW, 380...415 V ATV930 variable speed drive wall mount - 3 kW, 380...480 V ATV930 variable speed drive wall mount - 4 kW, 380...480 V ATV930 variable speed drive wall mount - 5.5 kW, 380...480 V ATV930 variable speed drive wall mount - 1.5 kW, 200...240 V ATV930 variable speed drive wall mount - 2.2 kW, 200...240 V ATV930 variable speed drive wall mount - 3 kW, 200...240 V ATV950 variable speed drive wall mount - 3 kW, 380...480 V ATV950 variable speed drive wall mount - 4 kW, 380...480 V ATV950 variable speed drive wall mount - 5.5 kW, 380...480 V
Needed quantity	1
Electrical connection	Terminal block, connection capacity: 6 mm <sup>2</sup> / AWG 10

## Complementary

Maximum motor cable length	300 M unshielded cable 300 m shielded cable
Dv/dt	3000 V/μs max at 200...240 V 3000 V/μs max at 380...480 V
Thermal losses	38 W at 4 kHz
Maximum drive output frequency	100 Hz
Ambient air temperature for operation	-10...50 °C (without current derating) 50...60 °C (with current derating 1.5 % per °C)

Operating altitude	0...1000 m without current derating 1000...4000 m with current derating 1 % per 100 m
Width	295 mm
Height	535 mm
Depth	215 mm
Net weight	12 kg

## Environment

IP degree of protection	IP20 IP21 (with kit VW3A53902)
Ambient air temperature for storage	-40...70 °C

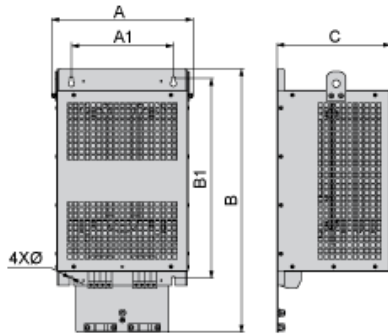
## Packing Units

Unit Type of Package 1	PCE
Number of Units in Package 1	1
Package 1 Height	39.0 cm
Package 1 Width	59.0 cm
Package 1 Length	36.6 cm
Package 1 Weight	18.8 kg

## Offer Sustainability

REACH Regulation	<a href="#">REACH Declaration</a>
REACH free of SVHC	Yes
EU RoHS Directive	Pro-active compliance (Product out of EU RoHS legal scope) <a href="#">EU RoHS Declaration</a>
Toxic heavy metal free	Yes
Mercury free	Yes
China RoHS Regulation	<a href="#">China RoHS Declaration</a>
RoHS exemption information	<a href="#">Yes</a>

Dimensions



Dimensions in mm

A	B	C	A1	B1	Ø
285	520	215	210	411	7

Dimensions in in.

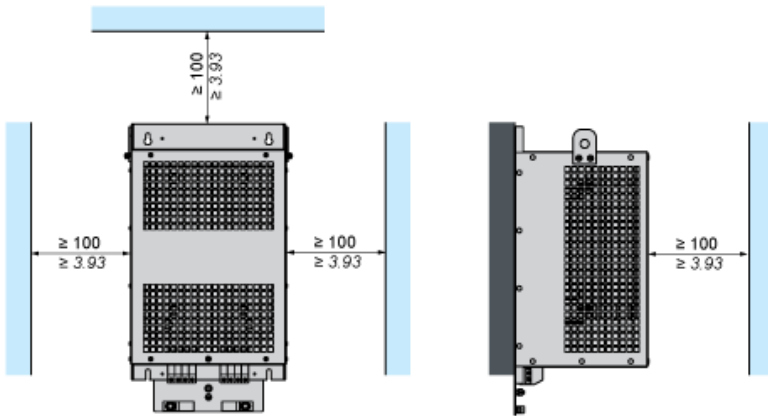
A	B	C	A1	B1	Ø
11.2	20.5	8.5	8.3	16.2	0.28

Mounting and Clearance

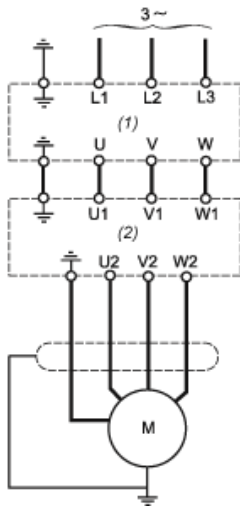


(1) Filter

$\frac{\text{mm}}{\text{in.}}$



Recommended Schema



- (1) Drive
- (2) Filter