

## MAX38643A WLP Evaluation Kit

Evaluates: MAX38643A in WLP

### General Description

The MAX38643A evaluation kit (EV kit) evaluates the MAX38643A, an ultra-low quiescent current step-down DC-DC converter in the wafer-level package (WLP). The EV kit operates over an input range of 1.8V to 5.5V, and provides resistor-configurable output voltages from 1.0V to 3.3V. The EV kit delivers up to 700mA of current depending on the input voltage to the output voltage ratio.

The EV kit comes with the MAX38643AENT+ installed.

### Features

- Evaluates the MAX38643A in a 6-pin WLP
- 1.8V to 5.5V Input Range
- 1.0V to 3.3V Configurable Output Voltage
- Up to 700mA Output Current
- Proven 2-Layer 1oz Copper PCB Layout
- Demonstrates Compact Solution Size
- Fully Assemble and Tested

**Ordering Information** appears at end of data sheet.

### Quick Start

#### Required Equipment

- MAX38643A WLP EV kit
- 5.5V, 3A DC power supply
- Electronic load capable of 700mA
- Digital voltmeter (DVM)

#### Procedure

The EV kit is fully assembled and tested. Follow the steps below to verify board operation.

**Caution: Do not turn on power supply until all connections are completed.**

- 1) Verify that jumpers JU1 and JU2 are in their default positions, as shown in [Table 1](#) and [Table 2](#).
- 2) Connect the 5.5V power supply between the IN and nearest GND terminal posts.
- 3) Connect the 700mA electronic load between the OUT and nearest GND terminal posts.
- 4) Connect the DVM between the OUT and nearest GND terminal posts.
- 5) Turn on the power supply.
- 6) Enable the electronic load.
- 7) Verify that the voltage at the OUT terminal post is 1.8V, within the device and the Output Voltage Selecting Resistor (RSEL)'s accuracy specifications.

### MAX38643A EV Kit Files

FILE	DESCRIPTION
MAX38643A WLP EV BOM	EV Kit Bill of Material
MAX38643A WLP EV PCB Layout	EV Kit Layout
MAX38643A WLP EV Schematic	EV Kit Schematic

### Detailed Description of Hardware

The MAX38643A EV kit evaluates the MAX38643A, an ultra-low quiescent current step-down DC-DC converter in the WLP. The EV kit operates over an input range of 1.8V to 5.5V, and provides resistor-configurable output voltages from 1.0V to 3.3V. The EV kit delivers up to 700mA of current depending on the input voltage to the output voltage ratio.

The EV kit comes with the MAX38643AENT+ installed.

#### EN

The MAX38643A WLP EV kit provides a jumper JU1 to enable or disable the MAX38643A. Refer to [Table 1](#) for jumper JU1 settings.

**Table 1. EN (JU1)**

SHUNT POSITION	DESCRIPTION
1-2*	EV Kit Enabled
1-3	EV Kit Controlled by External (TTL) Source Connected to EXT_EN
1-4	EV Kit Disabled

\*Default position.

### Component Suppliers

SUPPLIER	WEBSITE
Murata	www.murata.com
Samsung Electronics	www.samsung.com
Würth Electronics	www.we-online.com

**Note:** Indicate that you are using the MAX38643A when contacting these component suppliers.

### Ordering Information

PART	TYPE
MAX38643AEVK#WLP	EV Kit

#Denotes RoHS-compliant device

### Output Voltage Selection

The MAX38643A WLP EV kit provides a jumper JU2 to select the MAX38643A output voltage. Refer to [Table 2](#) for jumper JU2 settings.

### Spare Inductor

The MAX38643A WLP EV kit provides a spare inductor on the PCB's bottom side. This spare inductor can be used to reconfigure the EV kit for a smaller solution size.

**Table 2. OUT (JU2)**

SHUNT POSITION	DESCRIPTION
1-2	OUT = 1.0V
1-3	OUT = 1.5V
1-4*	OUT = 1.8V
1-5	OUT = 3.3V
Not Installed	Output Voltage can be configured to between 0.7V and 3.3V by resistor R1. Refer to the IC data sheet.

\*Default position.

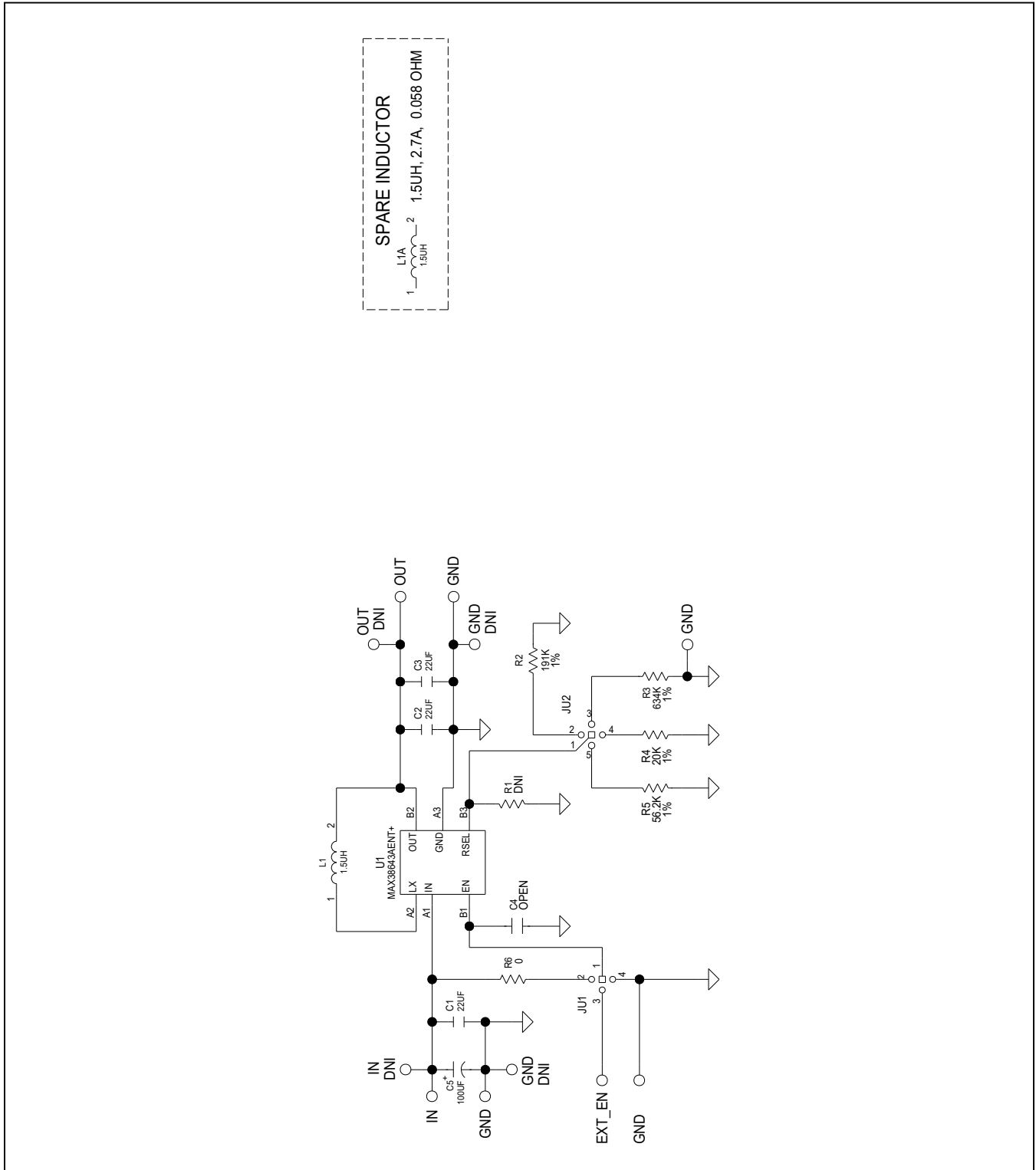
MAX38643A WLP Evaluation Kit

Evaluates: MAX38643A in WLP

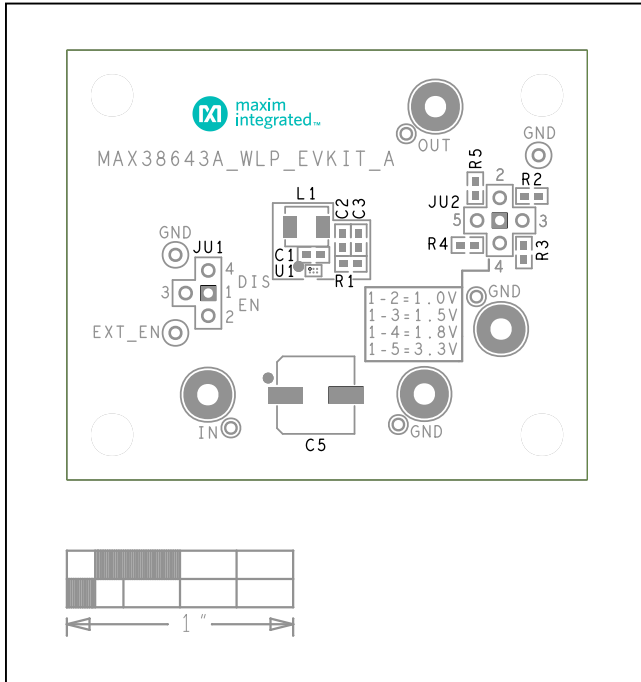
MAX38643A WLP EV Kit Bill of Materials

ITEM	REF DES	DNI/DNP	QTY	MFG PART #	MANUFACTURER	VALUE	DESCRIPTION	COMMENTS
1	C1-C3	-	3	CL10A226KQ8NRN	SAMSUNG	22UF	CAP; SMT (0603); 22UF; 10%; 6.3V; XSR; CERAMIC CHIP	
2	C5	-	1	255VVF100M	PANASONIC	100UF	CAP; SMT (CASE E7); 100UF; 20%; 25V; ALUMINUM-ORGANIC	
3	J1-J4	-	4	1514-2	KEystone	1514-2	TERMINAL; TURRET; PIN DIA=0.090IN; TOTAL LENGTH=0.105IN; BOARD HOLE=0.098IN; BRASS; TIN PLATING;	
4	JU1	-	1	PEC04SAAN	SULLINS ELECTRONICS CORP.	PEC04SAAN	CONNECTOR; MALE; THROUGH HOLE; BREAKAWAY; STRAIGHT; 4PINS	
5	JU2	-	1	PBC05SAAN	SULLINS ELECTRONICS CORP.	PBC05SAAN	CONNECTOR; MALE; THROUGH HOLE; BREAKAWAY; STRAIGHT; 5PINS; -65 DEGC TO +125 DEGC	
6	L1	-	1	74437324015	WURTH ELECTRONICS INC	1.5UH	INDUCTOR; SMT; SHIELDED; 1.5UH; 20%; 3.8A	
7	L1A	-	1	DFE252012F-1R5M	MURATA	1.5UH	INDUCTOR; SMT (1008); SHIELDED; 1.5UH; 20%; 2.7A	
8	R2	-	1	CRCW0603191KFK	VISHAY DALE	191K	RESISTOR; 0603; 191K OHM; 1%; 100PPM; 0.10W; METAL FILM	
9	R3	-	1	ERJ-3EKF6343	PANASONIC	634K	RES; SMT (0603); 634K; 1%; +/-100PPM/DEGC; 0.1W	
10	R4	-	1	CRCW060320K0FK	VISHAY DALE	20K	RESISTOR; 0603; 20K OHM; 1%; 100PPM; 0.1W; THICK FILM	
11	R5	-	1	ERJ-3EF5622	PANASONIC	56.2K	RESISTOR; 0603; 56.2K OHM; 1%; 100PPM; 0.1W; THICK FILM	
12	R6	-	1	RC1608J000CS;CR0603-J/-000ELF;RC0603JR-070RL	SAMSUNG ELECTRONICS; BOURNS; YAGEO PH	0	RESISTOR; 0603; 0 OHM; 5%; JUMPER; 0.10W; THICK FILM	
13	SU1, SU2	-	2	S1100-B; SX1100-B; STC02SYAN	KYCON; KYCON; SULLINS ELECTRONICS CORP.	SX1100-B	TEST POINT; JUMPER; STR; TOTAL LENGTH=0.24IN; BLACK; INSULATION=PBT; PHOSPHOR BRONZE CONTACT=GOLD PLATED	
14	TP5	-	1	5002	KEYSTONE	N/A	TEST POINT; PIN DIA=0.1IN; TOTAL LENGTH=0.3IN; BOARD HOLE=0.04IN; WHITE; PHOSPHOR BRONZE WIRE SILVER;	
15	TP6, TP7	-	2	5001	KEYSTONE	N/A	TEST POINT; PIN DIA=0.1IN; TOTAL LENGTH=0.3IN; BOARD HOLE=0.04IN; BLACK; PHOSPHOR BRONZE WIRE SILVER PLATE FINISH;	
16	U1	-	1	MAX38643AENT+	MAXIM	MAX38643AENT+	EVKIT PART - IC; TINY 300NANO-AMP NANOPOWER BUCK CONVERTER; PACKAGE OUTLINE: 21-100128; PACKAGE CODE: N60E1+1; WLP6	
17	PCB	-	1	MAX38643AWLP	MAXIM	PCB	PCB: MAX38643AWLP	-
18	MH1-MH4	DNP	0	9032	KEYSTONE	9032	MACHINE FABRICATED; ROUND-THRU HOLE SPACER; NO THREAD; M3.5; 5/8IN; NYLON	
19	R1	DNP	0	CRCW06030000Z0	VISHAY DALE	0	RESISTOR; 0603; 0 OHM; 0%; JUMPER; 0.1W; THICK FILM	
20	C4	DNP	0	N/A	N/A	OPEN	PACKAGE OUTLINE 0603 NON-POLAR CAPACITOR	
TOTAL			24					

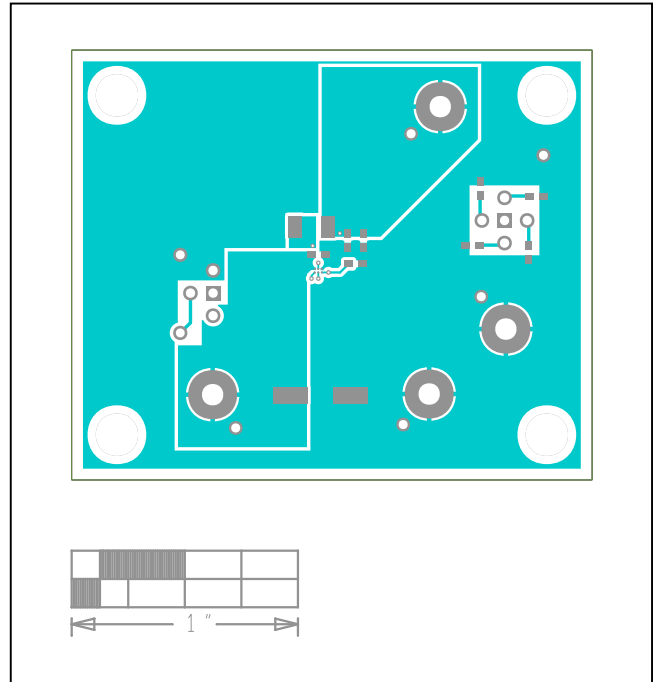
MAX38643A WLP EV Kit Schematic



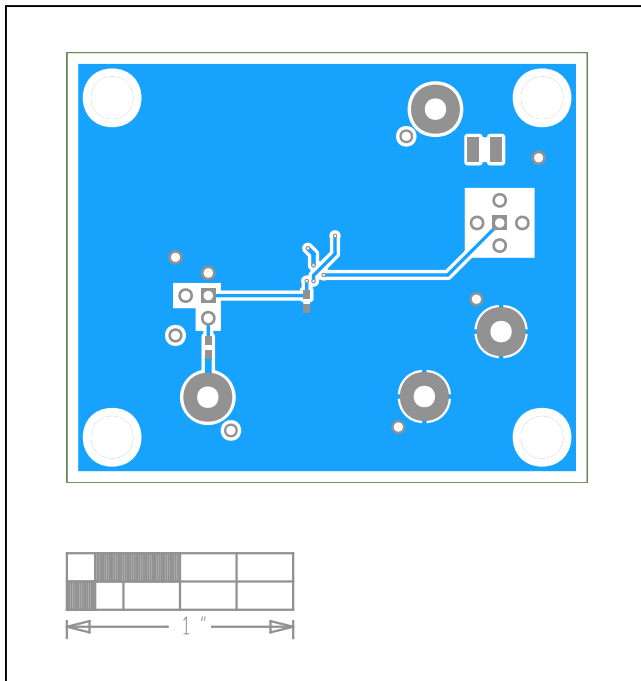
MAX38643A WLP EV Kit PCB Layout Diagrams



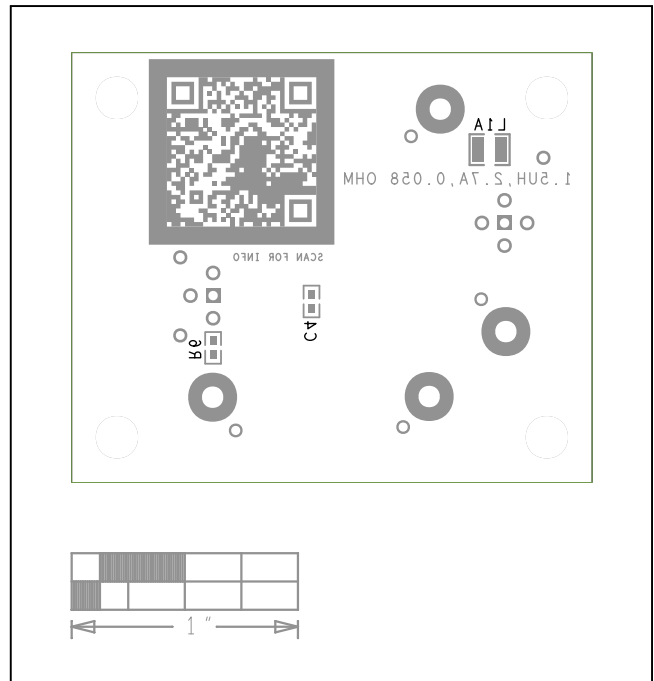
MAX38643A WLP EV Kit—Silk\_Top



MAX38643A WLP EV Kit—Top



MAX38643A WLP EV Kit—Bottom



MAX38643A WLP EV Kit—Silk\_Bot

### Revision History

REVISION NUMBER	REVISION DATE	DESCRIPTION	PAGES CHANGED
0	4/19	Initial release	—

For pricing, delivery, and ordering information, please visit Maxim Integrated's online storefront at <https://www.maximintegrated.com/en/storefront/storefront.html>.

*Maxim Integrated cannot assume responsibility for use of any circuitry other than circuitry entirely embodied in a Maxim Integrated product. No circuit patent licenses are implied. Maxim Integrated reserves the right to change the circuitry and specifications without notice at any time.*