

Datasheet

Time Lag Glass Tube Fuse, 0.5-10A, 5x20mm

**Stock No: 1778019, 1778020, 1778021, 1778022, 1778023, 1778025,
1784155, 1784156**

RS Pro



Specifications:

Materials

Tube (Body): Transparent glass tube. No breaking or deformation is allowed.

Two brass end caps: Made of brass of good conductivity.

Coating of brass caps: Plating the surface with nickel. If the indication is added with "S", it with "S", it needs to be plated with silver.

Interrupting Ratings

0.5A~10A 10000 amperes at 125V AC

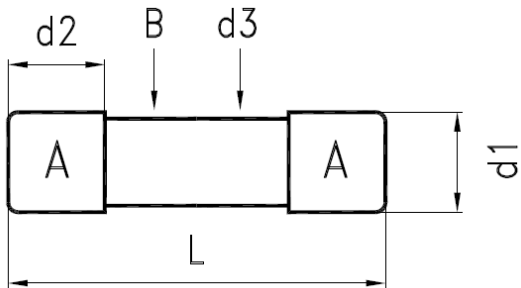
0.5A~1A 35 amperes at 250V AC

1.1A~3.5A 100 amperes at 250V AC

3.6A~10A 200 amperes at 250V AC

Operating Temperature

-55°C to +125°C

Drawing (mm):


NO.	Part Name		Volume
A	Brass Cap	Nickel Plating	2
B	Glass Tube	Transparent Glass	1
d1	Dia. of Cap	$5.2^{+0.1}_{-0.2}$ mm	
d2	Height of Cap	5.25 ± 0.1 mm	
d3	Dia. of Ceramic	4.56 ± 0.2 mm	
L	Body of Fuse	20.00 ± 0.75 mm	

Electrical Characteristic:

	100% Rating		135% Rating		200% Rating	
	Min.	Max.	Min.	Max.	Min.	Max.
0.5A~10A	4 hr			60 min	2 sec	120 sec

Mark Approvals	Nominal Resistance
	Cold Ohms
0.5 A	0.4938
1 A	0.1632
2 A	0.0628
3 A	0.0364
4 A	0.0249
5 A	0.0209
6 A	0.0148
10 A	0.006



ENGLISH

Reference:

Stock No	Rating amperes
1778025	0.5A 250V
1784155	1A 250V
1778019	2A 250V
1778020	3A 250V
1778021	4A 250V
1778022	5A 250V
1778023	6A 250V
1784156	10A 250V