

Datasheet

Stock No: 286-3471

RS Pro Round Tube T-Connector, strut profile Type 3

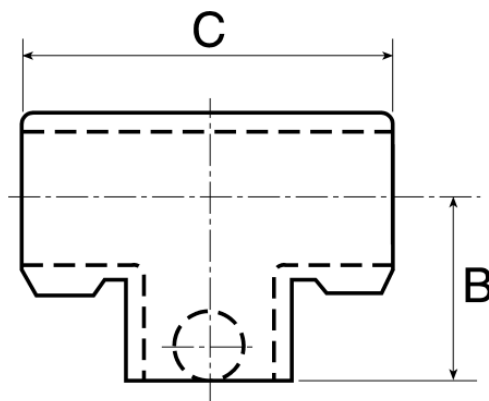


Product Details

Long Tee

Produces a 90° butt joint between two tubes
Fitting can be used to join through tube

Dimensions (mm)		
Tube Size Ref.	B	C
1	48	96
2	60	122
3	67	134





ENGLISH

Specifications:

Structural Element Type	Round Tube
Connector Type	T-Connector
Fits Strut Profile	Type 3
Fits Tube Diameter	48.3mm
Product Family	RS Handrail System
Material	Cast Iron
Product System	104