



ENGLISH

# Datasheet

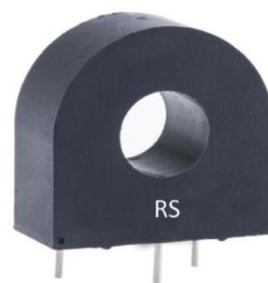
Stock No: 1243888

## RS Pro

### Low Cost 50/60Hz Current Transformers

#### Application

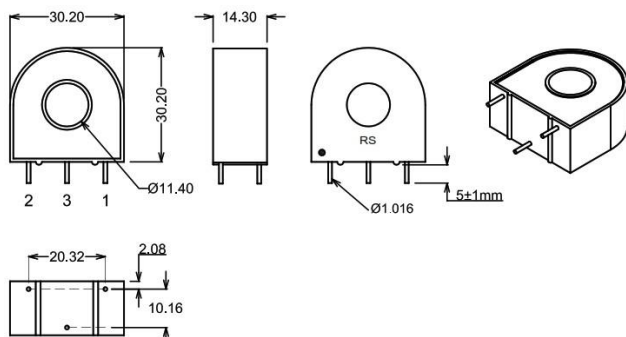
- Sensing Overload Current
- Ground fault detection
- Metering
- Analog to Digital Circuits
- Fully ROHS & REACH Compliance
- All Materials UL94-V0
- Storage temperature -55°C to +130°C



#### Electrical Specifications @ 20°C ambient

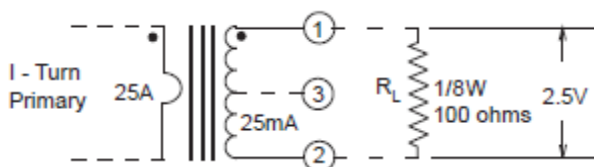
Primary Current	25A nom., 75A max.
Turns Ratio	1000:1 nominal
Volt per Amp Ratio at 25A for 100 Ω load	0.100 V/A
Volt per Amp Ratio at 2.5A for 100 Ω load	0.098 V/A
DC Resistance at 20°C	48 Ω
Dielectric Withstanding Voltage (Hi-pot)	4KVrms

#### Mechanical Dimensions



#### Notes:

- 1) Unless requested, the terminating resistor and the one-turn primary are not supplied
- 2) Pin 3: Normally for mechanical support only but will be used on center tapped designs
- 3) Tolerance  $\pm 0.20\text{mm}$





# Response Curves

AC1025

ENGLISH

