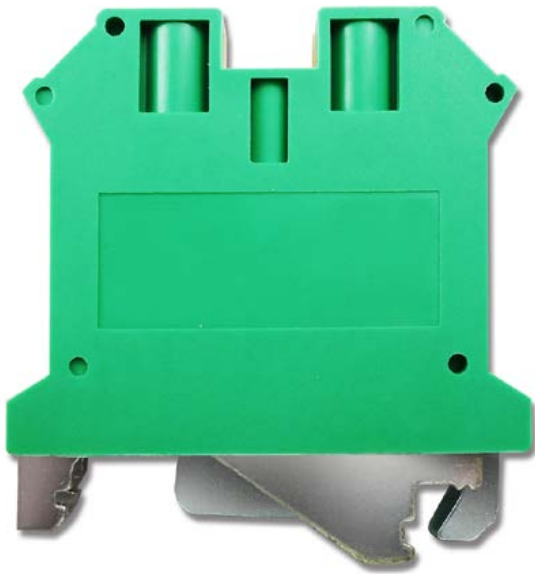


Product Datasheet

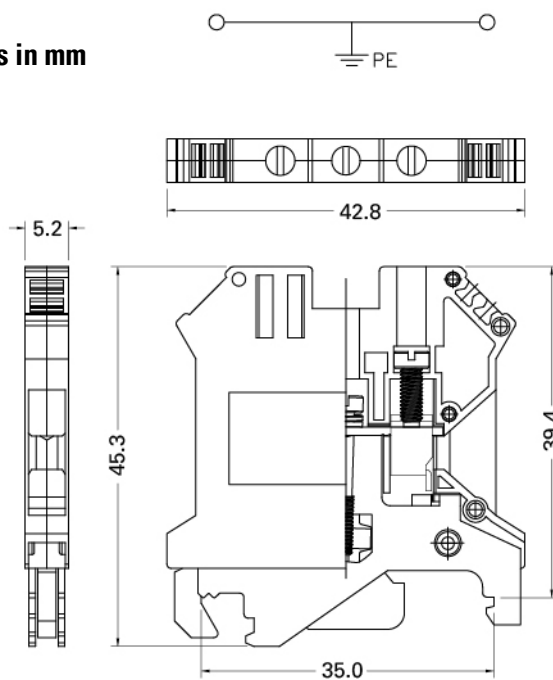
Screw Ground mini Terminal Blks 2.5sq.mm

Screw Clamp Ground mini Terminal Block, 600V, 28-12 AWG, 0.2-2.5 sq.mm




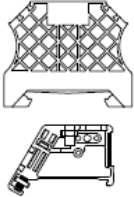

878-7562



Dimensions in mm



Product Specifications:

Specifications	2.5mm ²
Technical Date	Rated voltage / Rated current / Wire size
UL	600V / AWG 28-12
CSA	600V / AWG 28-12
IEC	800V / 0.2-2.5mm ²
Insulating impulse voltage withstand/pollution degree	8KV / 3
Torque (in -lbs)	4-5.2
Clamping Screw (M)	M2.6
Insulation stripping length (mm)	8~10 mm
Net weight per piece	16.2g
Material / Available Color	 Green / Yellow
Rail Dimensions	T / W / H (mm)
For TS35x7.5 	5.2 x 42.5 x 47.5
For TS35x15 	5.2 x 42.5 x 55
Accessories	Cat. No.
End Bracket 	8787553 8787556
Marking Tags 	8787590