

## FEATURES

- Made from durable fabricated 316 stainless steel
- Durable welded construction
- Provides protection against corrosive media
- Reduces the possibility of contamination
- Protection against physical impact
- Allows quick and easy removal and insertion
- Prevents spillage
- Supplied with 1/8 BSP stainless steel compression fitting

## RS PRO Thermowell for use with Temperature Sensor With 6mm Probe Diameter, 1/2 BSP

RS Stock No.: 286-939



RS Professionally Approved Products bring to you professional quality parts across all product categories. Our product range has been tested by engineers and provides a comparable quality to the leading brands without paying a premium price.

## Product Description

From RS PRO a high-quality thermowell for protecting your industrial temperature probe or thermocouple from damage. This damage is can be caused by the harsh processes the sensor is inserted into such as corrosive media. Thermowells also allow your temperature probe to be easily removed and interchanged without the need to open up and disturb the process. This thermowell is also called a thermopocket as it has a welded, fabricated 316 stainless steel design as opposed to being machined from solid metal and is suitable for use in low-pressure environments.

## General Specifications

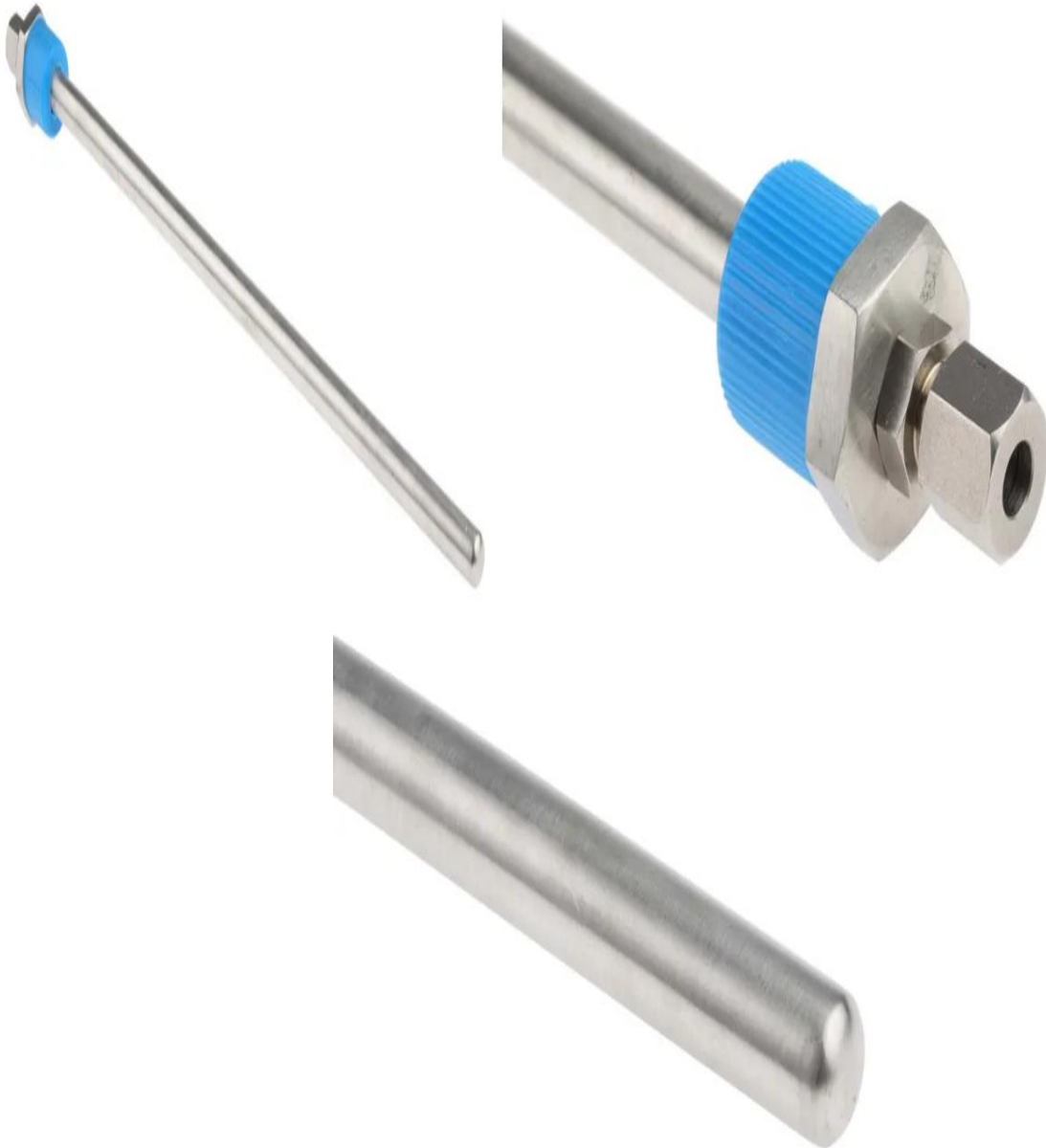
|                       |                    |
|-----------------------|--------------------|
| <b>Accessory Type</b> | Thermowell         |
| <b>For Use With</b>   | Temperature Sensor |
| <b>Applications</b>   | 1/2 BSP Connector  |

## Mechanical Specifications

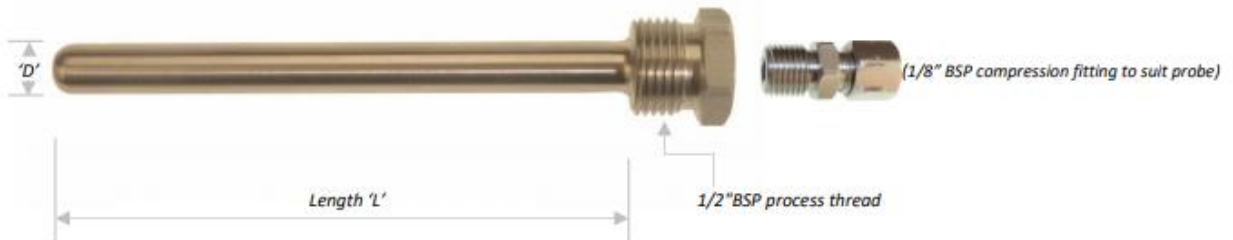
|                         |        |
|-------------------------|--------|
| <b>Immersion Length</b> | 350mm  |
| <b>Pocket Diameter</b>  | 11.1mm |
| <b>C/W fitting</b>      | Yes    |
| <b>To Suitable</b>      | 6.0mm  |
| <b>Probe Diameter</b>   | 6.0mm  |

## Approvals

|                                  |      |
|----------------------------------|------|
| <b>Compliance/Certifications</b> | RoHS |
|----------------------------------|------|



**Fabricated Thermopockets** *(complete with compression fitting)*



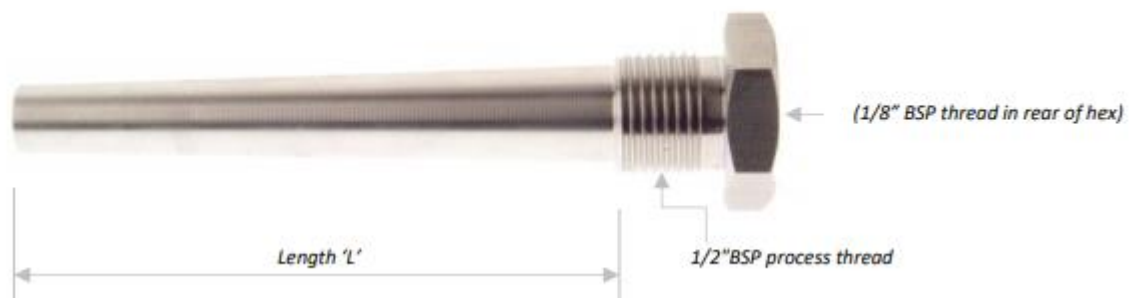
| Suits probe DiaØ | Process Thread    | *Immersion Length 'L' | Pocket Dia 'D' | C/W fitting /to suit | Allied Code | RS order Code |
|------------------|-------------------|-----------------------|----------------|----------------------|-------------|---------------|
| 6.0mm            | 1/2" BSP Parallel | 25mm                  | 11.1mm         | Yes/6.0mm            |             | 178-0956      |
| 6.0mm            | 1/2" BSP Parallel | 50mm                  | 11.1mm         | Yes/6.0mm            |             | 178-0957      |
| 6.0mm            | 1/2" BSP Parallel | 75mm                  | 11.1mm         | Yes/6.0mm            |             | 178-0958      |
| 6.0mm            | 1/2" BSP Parallel | 100mm                 | 11.1mm         | Yes/6.0mm            | 70643613    | 363-3007      |
| 6.0mm            | 1/2" BSP Parallel | 150mm                 | 11.1mm         | Yes/6.0mm            | 70637837    | 286-923       |
| 6.0mm            | 1/2" BSP Parallel | 350mm                 | 11.1mm         | Yes/6.0mm            | 70637838    | 286-939       |
| 6.0mm            | 1/2" BSP Parallel | 550mm                 | 11.1mm         | Yes/6.0mm            | 70637839    | 286-945       |
| 3.0mm            | 1/2" BSP Parallel | 25mm                  | 8.0mm          | Yes/3.0mm            |             | 178-0953      |
| 3.0mm            | 1/2" BSP Parallel | 50mm                  | 8.0mm          | Yes/3.0mm            |             | 178-0954      |
| 3.0mm            | 1/2" BSP Parallel | 75mm                  | 8.0mm          | Yes/3.0mm            |             | 178-0955      |
| 3.0mm            | 1/2" BSP Parallel | 100mm                 | 8.0mm          | Yes/3.0mm            | 70643614    | 363-3029      |
| 3.0mm            | 1/2" BSP Parallel | 150mm                 | 8.0mm          | Yes/3.0mm            | 70643615    | 363-3035      |

### Solid drilled Thermowell (standard parallel type)



| Suits probe DiaØ | Process Thread    | *Immersion Length | Pocket Dia | C/W fitting /to suit | Allied Code | RS order Code |
|------------------|-------------------|-------------------|------------|----------------------|-------------|---------------|
| 6.0mm            | 1/2" BSP Parallel | 150mm             | 12mm       | Yes/6.0mm            | 70643385    | 338-9508      |

### Solid drilled Thermowells – Tapered (high pressure tapered type)



| Suits probe DiaØ | Process Thread    | *Immersion Length 'L' | Pocket Dia | C/W fitting /to suit | Allied Code | RS order Code |
|------------------|-------------------|-----------------------|------------|----------------------|-------------|---------------|
| 6.0mm            | 1/2" BSP Parallel | 100mm                 | 16/12mm    | Optional             | 70644132    | 436-0665      |
| 6.0mm            | 1/2" BSP Parallel | 150mm                 | 16/12mm    | Optional             | 70644133    | 436-0671      |