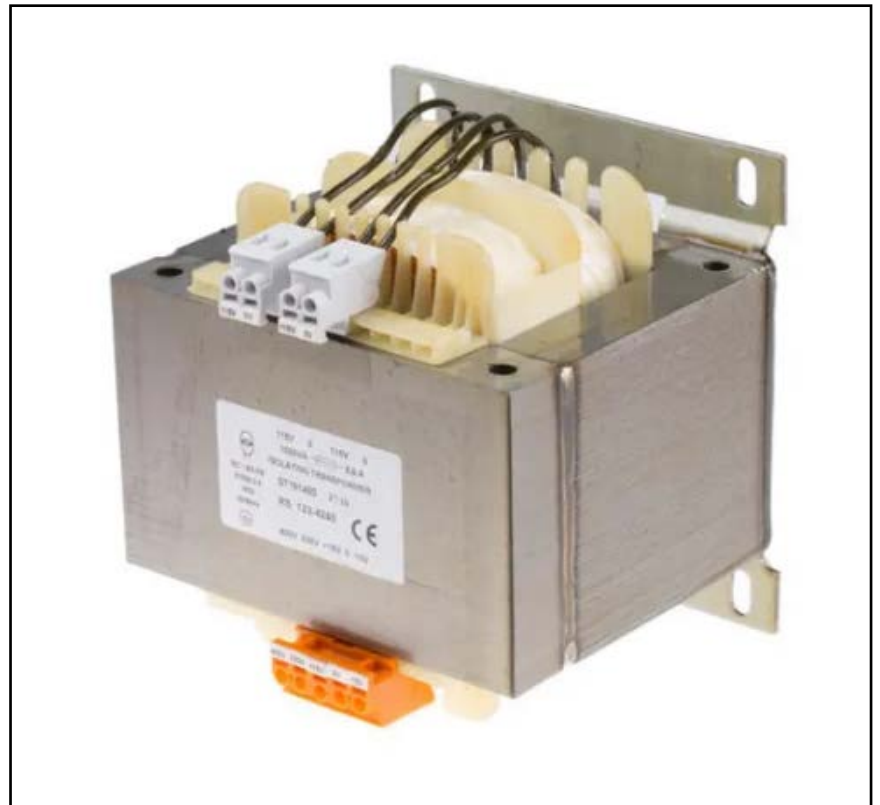


FEATURES

- Isolation transformer
- Low-noise laminations
- DIN rail mounting and screw mounting
- Earth terminal included to ground your signal
- Primary voltage rating of 15 V AC to 400 V AC
- Secondary voltage rating of 115V AC
- Power rating of 1000 VA
- Weight of 12.8 kg
- Measures 120 mm (L) x 124 mm (W) x 125 mm (D)
- Operating frequency range of 50 to 60 Hz
- 100% electrical and flash tested

RS PRO 1000VA Isolation Transformer, 15 → 400V ac Primary, 115V ac Secondary

RS Stock No.: 123-4240



RS Professionally Approved Products bring to you professional quality parts across all product categories. Our product range has been tested by engineers and provides a comparable quality to the leading brands without paying a premium price.

Product Description

Connect your electrical circuits safely with this panel isolation transformer from RS PRO. It's suitable for a wide variety of general applications and can be mounted onto flat, panel and DIN rail surfaces (DIN stands for Deutsches Institut für Normung, the German Institute for Standardisation).

General Specifications

Number of Outputs	1
Applications	Automotive engines, Household applications, Industrial machinery, Medical equipment, Telecommunications equipment

Electrical Specifications

Power Rating	1000VA
Primary Voltage Rating	15Vac to 400Vac
Secondary Voltage Rating	1115Vac
Isolation	5kV RMS
Temperature Class	B (130°)

Input Data

Rated Input Voltage	15Vac to 400Vac
Minimum Operating Frequency	50Hz
Maximum Operating Frequency	60Hz

Output Data

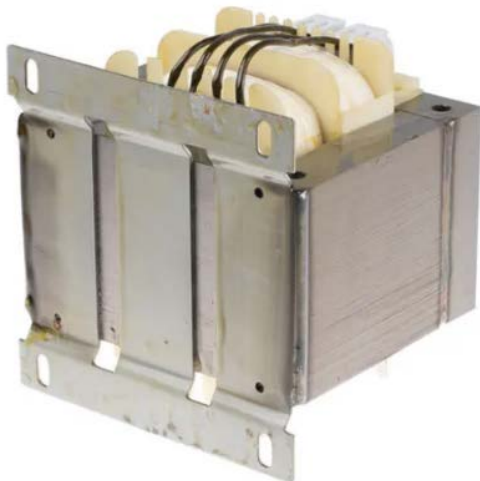
Rated Output Voltage	1115Vac
Rated Power	1000VA

Mechanical Specifications

Mounting Type	DIN Rail Mount, Screw Mount
Dimensions	150mm x 156mm x 152mm
Length	150mm
Width	156mm
Depth	152mm
Weight	12.8kg

Approvals

Compliance/Certifications	RoHS
Standards Met	EN61558-2-4



Ordering details:

RS Stock number	Power VA	Specification	No-load voltage	According to
1235697	25	Isolation transformer, DIN, -15-0-15-230-400V, 2x12V	13.5V	EN61558-2-6
1235699	40	Isolation transformer, DIN, -15-0-15-230-400V, 2x12V	13.4V	EN61558-2-6
1234138	63	Isolation transformer, DIN, -15-0-15-230-400V, 2x115V	130.1V	EN61558-2-4
1234137	63	Isolation transformer, DIN, -15-0-15-230-400V, 2x12V	13.6V	EN61558-2-6
1234140	100	Isolation transformer, DIN, -15-0-15-230-400V, 2x115V	123.8V	EN61558-2-4
1234139	100	Isolation transformer, DIN, -15-0-15-230-400V, 2x12V	13.1V	EN61558-2-6
1234141	130	Isolation transformer, DIN, -15-0-15-230-400V, 2x12V	12.9V	EN61558-2-6

Ordering details (continued):

RS Stock number	Power VA	Specification	No-load voltage	According to
1234143	160	Isolation transformer, DIN, -15-0-15-230-400V, 2x115V	121.9V	EN61558-2-4
1234142	160	Isolation transformer, DIN, -15-0-15-230-400V, 2x12V	12.7V	EN61558-2-6
1234145	250	Isolation transformer, DIN, -15-0-15-230-400V, 2x115V	122.1V	EN61558-2-4
1234144	250	Isolation transformer, DIN, -15-0-15-230-400V, 2x12V	12.5V	EN61558-2-6
1234146	400	Isolation transformer, -15-0-15-230-400V, 2x115V	121.6V	EN61558-2-4
1234238	500	Isolation transformer, -15-0-15-230-400V, 2x115V	121.1V	EN61558-2-4
1234148	500	Isolation transformer, -15-0-15-230-400V, 2x12V	12.5V	EN61558-2-6
1234239	800	Isolation transformer, -15-0-15-230-400V, 2x115V	120.5V	EN61558-2-4
1234240	1000	Isolation transformer, -15-0-15-230-400V, 2x115V	119.6V	EN61558-2-4
1234241	1600	Isolation transformer, -15-0-15-230-400V, 2 x 115V	118.2V	EN61558-2-4
1234242	2000	Isolation transformer, -15-0-15-230-400V, 2x115V	117.7V	EN61558-2-4
1234243	2500	Isolation transformer, -15-0-15-230-400V, 2x115V	117.7V	EN61558-2-4

Dimensions and fittings:

