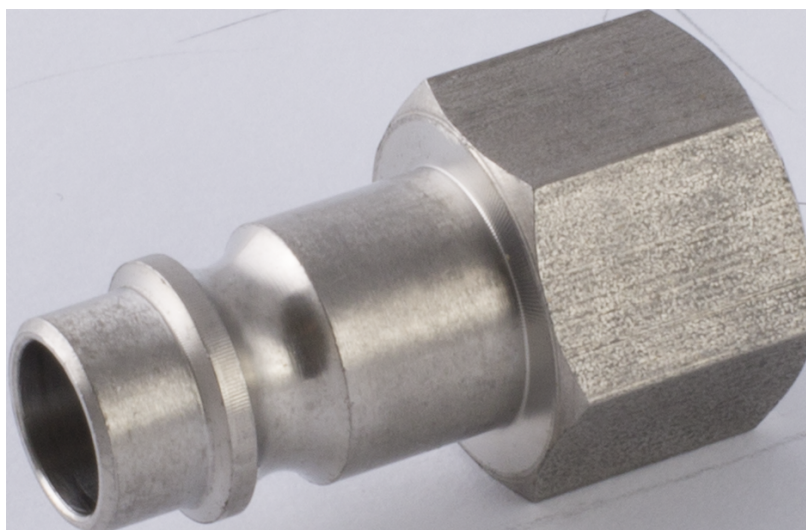


## FEATURES

- All fluids usable in aggressive environment
- Mechanical resistance
- Silicon free

# RS PRO FEMALE PLUG EU DN7.8 INOX 1/2

RS Stock No.: 2312697



RS PROfessionally Approved Products bring to you professional quality parts across all product categories. Our product range has been tested by engineers and provides a comparable quality to the leading brands without paying a premium price.

## Product Description

The RS PRO female plug eu dn7, 8 inox 1/2 works in 0 to 16 bar pressure range. It mainly used in compressed air & tools, pneumatic & fluid technology, food & beverages applications. It provides high performance for multiple fluids in a wide range of temperature and pressure. Operating temperature range is from - 15 °C to + 200 °C. RoHS and REACH compliant.

## General Specifications

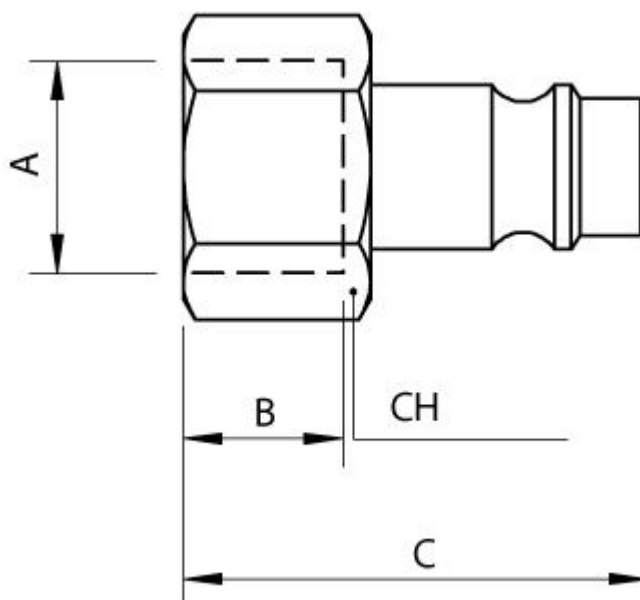
<b>Material</b>	Steel
<b>Applications</b>	Lubrication System, Cooling System, Pneumatic Machinery Equipment

## Mechanical Specifications

<b>Connection Type</b>	Threaded, Tube
<b>Hose Barb Connection</b>	15mm
<b>Coupling Gender</b>	Female
<b>Threaded Connection</b>	1/2in Female
<b>Thread Size</b>	1/2in
<b>Wrench Size1</b>	24
<b>Length L1</b>	37mm

## Similar Products

Parameters	2312696	2312695
Brand	RS PRO	RS PRO
Connection Type	Threaded, Tube	Threaded, Tube
Tube Connection Size	11.5mm	11mm
Coupling Gender	Female	Female
Threaded Connection	3/8 in Female	1/4 in Female
Thread Size	3/8in	1/4in
Wrench Size	19	17
Length	33.5mm	37mm



A	B	C	D	CH	Pack.
1/2	15	37	-	24	2