

## FEATURES

- Robust, thick-walled design
- Closed barrel ensures crimp terminal fits securely around the cable
- Copper body material provides high
- Conductivity and is easy to crimp
- Tin plating on crimp terminal provides resistance to corrosion
- Funnel-shaped internal barrel for easy wire insertion

## RS PRO Uninsulated Ring Terminal, M10 Stud Size to 95mm<sup>2</sup> Wire Size

RS Stock No.: 241-4647



RS Professionally Approved Products bring to you professional quality parts across all product categories. Our product range has been tested by engineers and provides a comparable quality to the leading brands without paying a premium price.

## Product Description

From RS PRO a high-quality heavy-duty tubular crimp ring terminal, also known as a ring connector or cable lug. Heavy duty ring crimp terminals are used for connecting multi-stranded cables to a stud or a post on an electrical component such as a battery terminal. This tubular ring terminal is made from thick-walled, heavy-duty, highly conductive copper and is tin plated. Once correctly crimped onto a cable this ring terminal will provide a secure and reliable electrical connection.

## General Specifications

<b>Insulation</b>	Uninsulated
<b>Contact Material</b>	Copper
<b>Contact Plating</b>	Tin
<b>Stud Size</b>	M10
<b>Application</b>	Wide range of industries for connecting wires to electrical components. Applications include wiring in industrial control systems and industrial machines, automotive applications, communication equipment, power supplies and domestic appliances.

## Mechanical Specifications

<b>Overall Length</b>	53.2mm
<b>Inner Ring Diameter</b>	10.3mm
<b>Maximum Wire Size</b>	95mm <sup>2</sup>

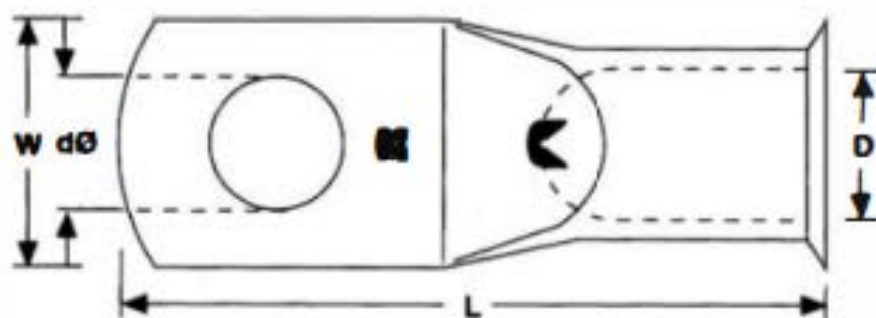
## Operation Environment Specifications

<b>Maximum Operating Temperature</b>	150°C
--------------------------------------	-------

## Approvals

### Compliance/Certifications

BS 2871, BS 4579 Part 1, BS 1872 Part 2 2011/65/EU and 2015/863



Dimensions (mm)						
RS Pro Stock Number	Conductor Size (mm <sup>2</sup> )	Stud Size	Length (L)	Width (W)	Inside Diameter (D)	Hole Diameter (dØ)
119-160	6	6	24.6	10	4	6.3
119-176	6	8	27.3	12.5	4	8.3
531-015	10	5	30	10.4	4.5	5.1
531-021	10	6	30	10.5	4.5	6.3
531-037	10	8	30	12.5	4.5	8.2
531-043	16	6	30.7	11	5.5	6.3
531-059	16	8	30.7	12.5	5.5	8.4
531-065	25	6	32.2	13.1	6.7	6.3
531-071	25	8	32.2	13.1	6.7	8.3
531-087	25	10	36.9	15.1	6.7	10.2
241-4631	35	8	37.6	15.8	8.6	8.3
531-885	35	10	41.5	16.2	8.6	10.3
531-891	50	10	43.2	17.6	9.6	10.3
531-908	50	12	43.2	18.7	9.6	12.8
531-914	70	10	50.4	21.8	12	10.2
531-920	70	12	50.4	21.8	12	12.7
241-4647	95	10	53.2	24.3	13.5	10.3
241-4669	95	12	53.2	24.3	13.5	12.7
241-4653	120	10	59.1	27.5	15	10.3
241-4675	120	12	59.1	27.5	15	12.7
241-4681	150	10	66.3	30.3	16.5	10.2
241-4704	150	12	66.3	30.3	16.5	12.7