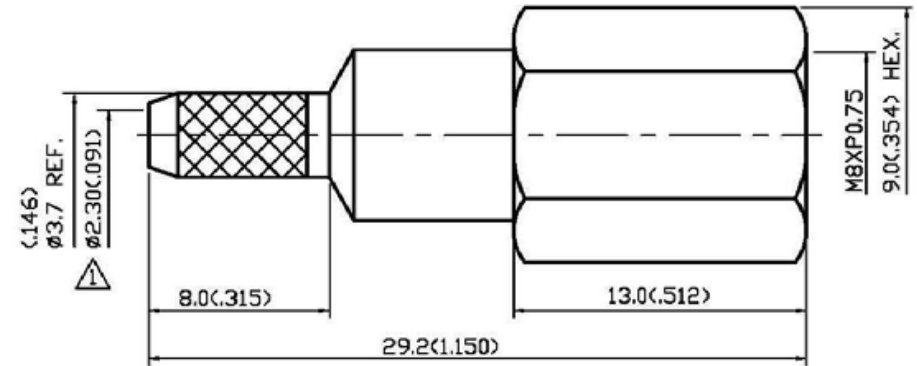
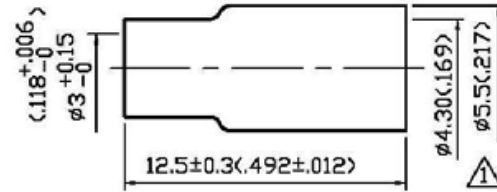


NO	DESCRIPTION	DATE
①	($\phi 5.3$) → $\phi 5.5$ $\phi 2.3^{+0.1}_{-0.05}$ → $\phi 2.30$ DEL $\phi 7.5$	09.28.06'
②	BACKGROUND FORMAT UPDATED	03.10.09'
③	DC-1.8 GHz → DC-900 MHz ADD VOLTAGE RATING DEL CABLE RETENTION DEL SOLDER/	01.13.14'



1.0 ELECTRICAL

- 1.1 FREQUENCY RANGE: DC-900 MHz ③
- 1.2 NOMINAL IMPEDANCE: 50 OHM
- 1.3 VOLTAGE RATING: 500 VOLTS MAX. ③

2.0 MATERIALS

- 2.1 BODIES: BRASS PER JIS-C3604
- 2.2 CENTER CONTACT: BRASS PER JIS-C3604
- 2.3 INSULATION: TEFLON PER ASTM D1457 AND ASTM D1710
- 2.4 CRIMP FERRULE: BRASS PER JIS-C2700

3.0 FINISHES AND OTHERS

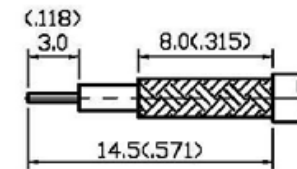
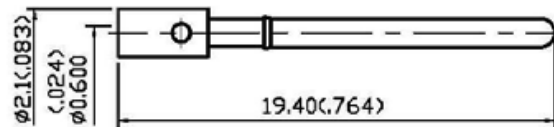
- 3.1 SEE BELOW TABLE FOR DETAILS.

4.0 MECHANICAL

- 4.1 FOR USE WITH RG174U OR SIMILAR STYLE CABLE
- 4.2 CABLE ATTACHMENT: OUTER: CRIMP, INNER: SOLDER/CRIMP
- 4.3 CRIMP SIZE REQUIRED: CONTACT: 1.8(0.071) HEX. CRIMP TOOL ③
FERRULE: 3.5(1.38) HEX. CRIMP TOOL
4.8(1.89) HEX. CRIMP TOOL

5.0 ENVIRONMENTAL

- 5.1 OPERATING TEMPERATURE RANGE: -55° C TO +125° C



STRIPPING DIMENSION
SCALE 3:1 RG174U

APPROVED

by _____ DATE: _____



NO	DESCRIPTION	MATERIAL	Q'TY	FINISH
5	INSULATION II	TEFLON	1	NONE
4	BODY	BRASS	1	NICKEL 100μ" MIN.
3	INSULATION I	TEFLON	1	NONE
2	CENTER CONTACT	BRASS	1	GOLD
1	CRIMP FERRULE	BRASS	1	NICKEL

DESCRIPTION		FME STRAIGHT PLUG CRIMP	
製圖	DRAWN Yoko	TOLERANCE .X ±0.2	品名 23-07 T.G.N 174U
檢圖	CHECK Angela	.XX ±0.1	DATE 07.06.92
認定	APPROVAL Angela	.XXX ±0.05	版次 A-3
	ANGLE ±5°	單位 mm(in)	REV. A-3
		比例 4:1	
		UNIT SCALE	
		DWG.NO. 23-0031	
		TITLE ROHS COMPLIANT	
		DATE 07.06.92	
		REV. A-3	