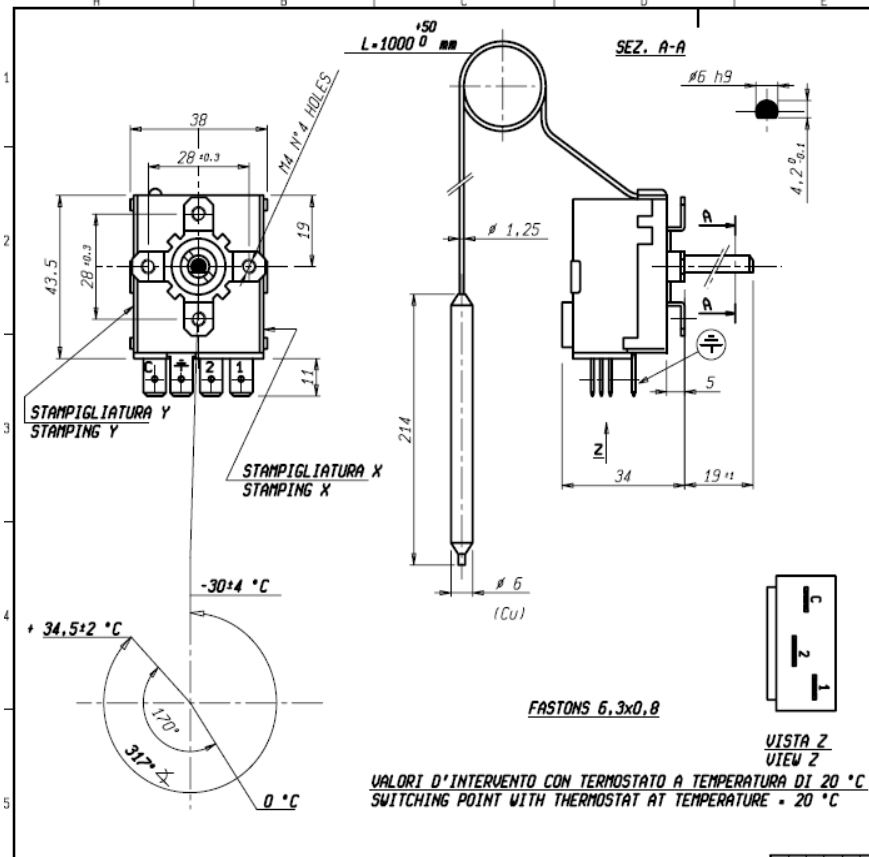


Datasheet

RS SPDT 16 A Thermostat, -30°C +34.5°C

RS Stock number [733-4732](#)



DATI TECNICI TECHNICAL DATA	
STAMPIGLIATURA Y STAMPING Y	C.S.N.E 6544 NOT UK 1150 SETTIMANA-ANNO LINEA
STAMPIGLIATURA X STAMPING X	-30°C TYPE TR2 15(2.5)A/250V~ T80
REGOLAZIONE D' INTERVENTO TEMPERATURE RANGE	+34,5 ±2 / -30 °C
DIFFERENZIALE TEMPERATURE DIFFERENTIAL	$\Delta t 1,5 \pm 1 \text{ K}$
MAX. TEMPERATURA TESTA MAX. BODY TEMPERATURE	T 80°C
MAX TEMPERATURA BULBO MAX BULB TEMPERATURE	T intervento + 65 °C ≤ 65 °C
RAGGIO MIN. CURVATURA CAPILLARE MIN. CAPILLARY BENDING RADIUS	5 mm.
PORTATA CONTATTI CONTACTS RATING	15(2.5)A/250V~
OMOLOGAZIONI APPROVED BY	
SCHEMA ELETTRICO WIRING DIAGRAM	