

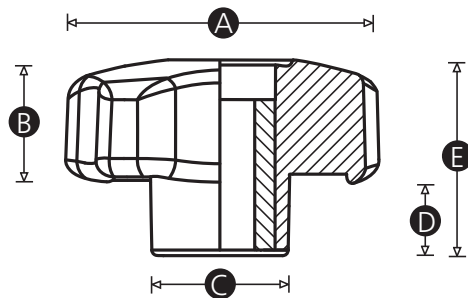


ENGLISH

Datasheet

**Stock No.1883459,1883460,1883461,1883462,1883463,
1883464,1883465,1883466**

RS PRO Through Thread Soft Touch Lobe Knob



S1

Material

Two-part mouldings - Inner moulding Polypropylene - Over moulded with 'Soft Touch' TPE

Female insert material

Brass

Standard colour

Black

Part No.	A	B	C	D	E	Thread size
1883459	28	16	12	10	26	M5
1883460	28	16	12	10	26	M6
1883461	40	17	18	12	29	M6
1883462	40	17	18	12	29	M8
1883463	50	19	21	12	31	M6
1883464	50	19	21	12	31	M8
1883466	60	21	23	13	34	M8
1883465	60	21	23	13	34	M10
	60	21	23	13	34	M12

TPE MATERIAL

PRODUCT: TPE-39 Styrenic Thermoplastic Elastomer

ORIGINATION: China

PHYSICAL PROPERTIES

Term/Item	Unit	Value
Density	kg/m ³	1160
Tensile Strength	MPa	11
Elongation at break	%	470
Tear Strength	kN/m	30
Abrasion	mm ³ lost	190
100% Modulus	GPa	8×10^{-3}
300% Modulus	GPa	9×10^{-3}
Electrical Resistivity	Ω .cm	8×10^{15}
Moulding Shrinkage	%	1.8
Water Absorption	%	0.05
Flammability	UL94	HB (1.5mm)