

Thank you for choosing **Schneider Electric** Vivace Unit. To ensure proper application of our product, please read through the following information before installation and use.

This application guide applies to the following products:

①	②	Cat. No. :	Description :
		KB31USB	1 x 2.1A USB Socket
		KB32USB	2 x 2.1A USB Socket

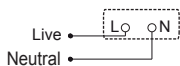
## SPECIFICATIONS

Input Voltage	100 - 240V~
Input Frequency	50/60 Hz
Input Current	0.45A(1G)/0.5A(2G)
Output Voltage	5V DC
Output Current	2.1A max(1G)/4.2A max(2G)
Panel Dimension	87mm x 87mm
Mounting Centre	60.3mm
Compliance	IEC 60950-1
Operation Temperature	Room Temperature
Protection	Over heat, over current, over voltage

## IMPORTANT NOTE

1. The products must be installed by qualified electricians
2. Please check your local wiring regulations before installation
3. Suggest to install product with 47mm depth wallbox
4. Suitable for mounting on concrete or other non-combustible surface only
5. Safekeeping the surround to prevent damage during product installation, Don't disassemble the USB module
6. Turn off the power supply when you clean the product. Use a soft cloth or tissue paper to wipe off the dust and dirt on the surface. Avoid using corrosive chemicals
7. Kindly ensure your device's Battery Charging Specification suitable with this USB Charger before charging
8. Do not insert metal objects into USB Charger
9. User will feel some heat at the product surface when charging is in progress
10. A power supply cord for connection to the AC MAINS SUPPLY shall be of conductors type as below specifications: AWG 18-12, 10A Max., 250 Va.c
11. For PERMANENTLY CONNECTED EQUIPMENT, a readily accessible disconnect device shall be incorporated in the building installation wiring
12. Indoor use only

## WIRING DIAGRAMS



**Schneider**  
Electric

## APPLICATION GUIDE

### USB Socket

**CAT. NO.**  
KB31USB  
KB32USB

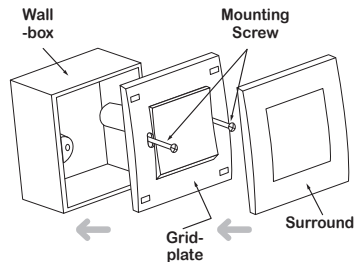
# Vivace

NVE10482.02 V05

## MOUNTING INSTRUCTION

**Fixing :**

Please refer to the following diagram for proper installation : (Proper wire stripping length : 10-12mm)

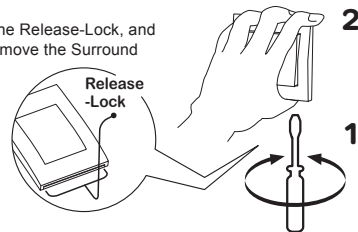


**Remarks:**

For surround mounting, align the clip locks on the grid plate and press both side of the surround. Complete engagement of the clip locks is indicated by two clear clicks.

**Remove :**

Insert a screwdriver into the Release-Lock, and twist the screwdriver to remove the Surround



感謝閣下選用 **Schneider Electric** 施耐德電機 Vivace 產品。在安裝及使用本產品前，請仔細閱讀此手冊內容。

此手冊適用於以下產品型號：

①	②	型號：	描述：
		① KB31USB	1位2.1安培USB插座
		② KB32USB	2位2.1安培USB插座

### 產品規格

輸入電壓	: 100-240V~
輸入頻率	: 50/60Hz
輸入電流	: 0.45A(1位)/0.5A(2位)
輸出電壓	: 5V DC
輸出電流	: 2.1A max(1位)/4.2A max(2位)
面板尺寸	: 87mm x 87mm
安裝孔中心距	: 60.3mm
安全標準	: IEC 60950-1
使用環境溫度	: 室內溫度
模組保護功能	: 過溫保護, 過流保護, 過壓保護

**Schneider**  
Electric  
施耐德電機

使用說明  
USB插座

型號  
KB31USB  
KB32USB

# Vivace

NVE10482 01 V04

### 注意事項

1. 產品安裝須由符合資格的電工完成
2. 安裝前，請確認產品符合當地相關布線規範
3. 請用47毫米深度牆盒安裝產品
4. 僅適宜安裝在混凝土或不易燃的表面上
5. 請不要拆卸USB模組。產品安裝期間，請妥善放置與保管邊框/面蓋，以防壓傷損壞
6. 清潔時，必須先關閉電源，再用輕微濕潤的軟性布料或紙巾擦拭產品表面，以清除塵埃及臟物。請勿使用帶有腐蝕性的化學劑劑擦拭，比如鹼性洗滌劑、酸性洗滌劑、稀釋劑、汽油、殺蟲劑等。否則，本產品可能發生表面開裂或其它故障
7. 使用本充電插座充電前，須確認待充(物)的電池滿足充電電池規範
8. 請勿將回型針等細小金屬物插入本充電插座的充電接口
9. 充電時，充電插座表面產生微熱，屬於正常現象
10. 安裝在交流端子的引線規格：250V~, 10A max., AWG 18-12
11. 此永久性連接式設備不包含內部斷開裝置，相應的斷開裝置應當安裝在設備的外部
12. 只供室內使用

### 接線圖



### 安裝指南

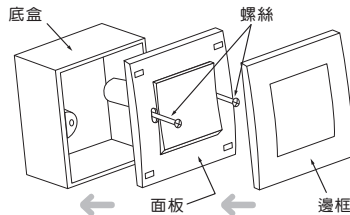
#### 安裝：

請按照下列次序安裝：

1. 把電線插入接線端子(建議剝線長度10-12mm),然後鎖緊螺絲以固定位置
2. 把面板固定于底盒
3. 安裝邊框

注意：

安裝邊框於面板時，請先確認及對準鎖扣的位置，然後用力壓下直至聽到“咔嗒”聲以確認邊框已完全嵌入。



#### 拆卸：

如有需要拆卸邊框，請將螺絲批插入拆卸槽并扭轉，即可拆下：

