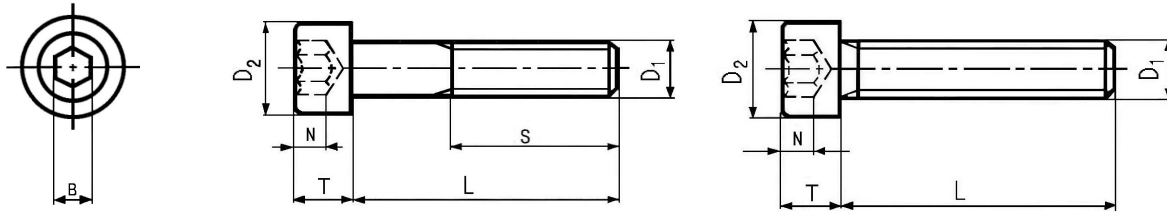


Socket Screw Cap Head



D IN 912

unit: mm

Nominal Dia. (D1)	Head Dia. (D2)	Head (T)	Recess (N)	Socket (B)	Thread (S)	Length (L)	Pitch
M1.4	2.6	1.4	0.6	1.3	14.0	3–12	0.3
M1.6	3.0	1.6	0.7	1.5	15.0	3–16	0.35
M2	3.8	2.0	1.0	1.5	16.0	3–30	0.4
M2.5	4.5	2.5	1.1	2.0	17.0	3–30	0.45
M2.6	5.0	2.6	1.2	2.0	–	3–25	0.45
M3	5.5	3.0	1.3	2.5	18.0	3–100	0.5
M3.5	5.65	3.5	2.0	2.5	–	6–20	0.6
M4	7.0	4.0	2.0	3.0	20.0	4–150	0.7
M5	8.5	5.0	2.5	4.0	22.0	5–250	0.8
M6	10.0	6.0	3.0	5.0	24.0	6–250	1.0
M8	13.0	8.0	4.0	6.0	28.0	8–300	1.25
M10	16.0	10.0	5.0	8.0	32.0	10–350	1.5
M12	18.0	12.0	6.0	10.0	36.0	12–350	1.75
M14	21.0	14.0	7.0	12.0	40.0	20–300	2.0
M16	24.0	16.0	8.0	14.0	44.0	20–450	2.0
M18	27.0	18.0	9.0	14.0	48.0	30–300	2.5
M20	30.0	20.0	10.0	17.0	52.0	30–400	2.5
M22	33.0	22.0	11.0	17.0	56.0	35–250	2.5
M24	36.0	24.0	12.0	19.0	60.0	40–420	3.0
M30	45.0	30.0	15.5	22.0	72.0	50–400	3.5
M33	50.0	33.0	18.0	24.0	78.0	80–300	3.5
M36	54.0	36.0	19.0	27.0	84.0	75–560	4.0
M42	63.0	42.0	24.0	32.0	96.0	100–400	4.5
M48	72.0	48.0	28.0	36.0	108.0	120–300	5.0

