

FEATURES

- Industrial EMI EMC Power Line Filter with High Performance
- Designed for increased requirements
- Excellent differential and common-mode attenuation

RS PRO Power Line Filters

RS Stock No.: 2378713, 2378714



RS Professionally Approved Products bring to you professional quality parts across all product categories. Our product range has been tested by engineers and provides a comparable quality to the leading brands without paying a premium price.

Power Line Filters

Product Description

- Electrical and electronic equipment
- Medical equipment
- Datacom equipment
- Office automation equipment

General Specifications

The compact size can be applied to various situations. YB12 filters are also available as two-stage filters (YB35) in noisy environment. There are a variety of parts and combinations to meet different customer's EMC tests. Customized products according to customer's requirements.

Mechanical Specifications

size	63X51X38mm (L X W X H)
weight	0.240kgs

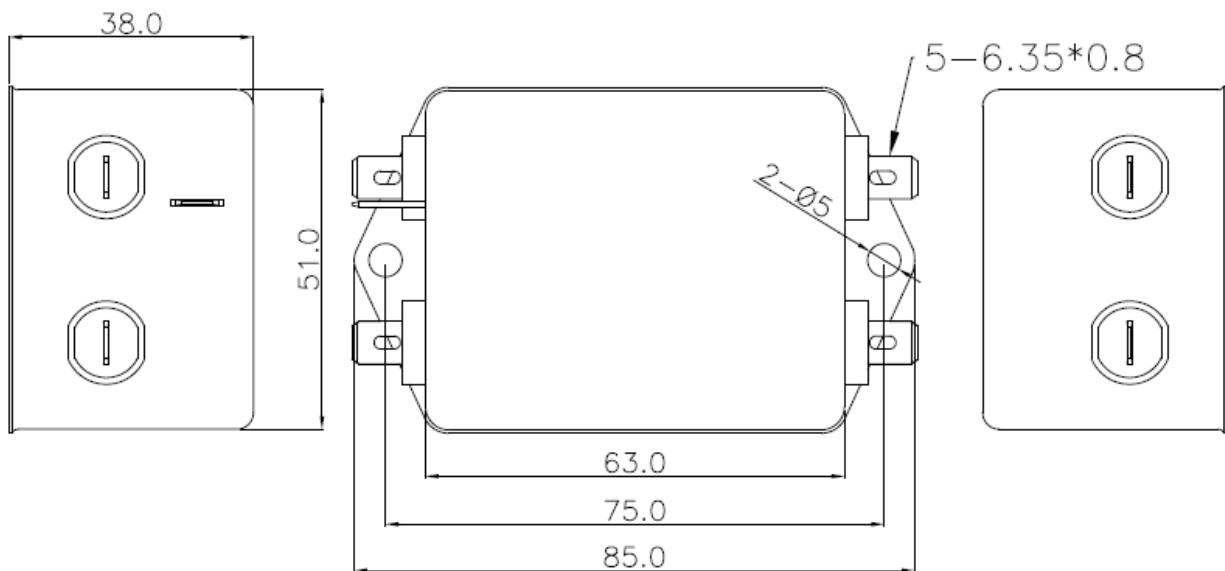
Electrical Specifications

Rated Voltage Max.	250VAC, 50/60Hz
Operating frequency	DC to 400Hz
Rated currents	3A@40°C

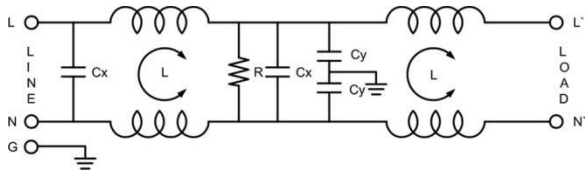
Approvals

<i>Declarations</i>	<i>CUL;TUV;CQC;CE</i>
<i>Standards Met</i>	<i>UL1283, CSA C22.2 No.8; IEC/EN 60939,; CQC GB 15288/GB 15287-2008</i>

Physical Dimensions:

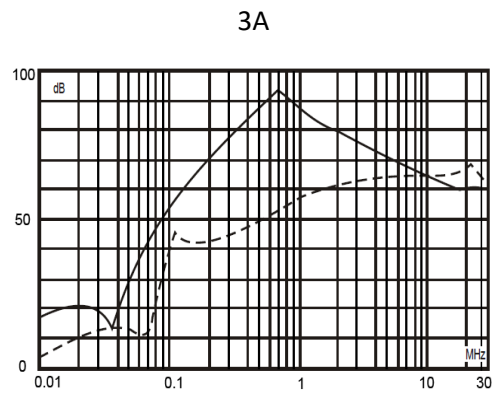


Electrical Schematic:



Insertion loss table(In 50ohm system according IEC/CISPR No.17)

———— Common mode - - - - - Differential mode



packaging

