

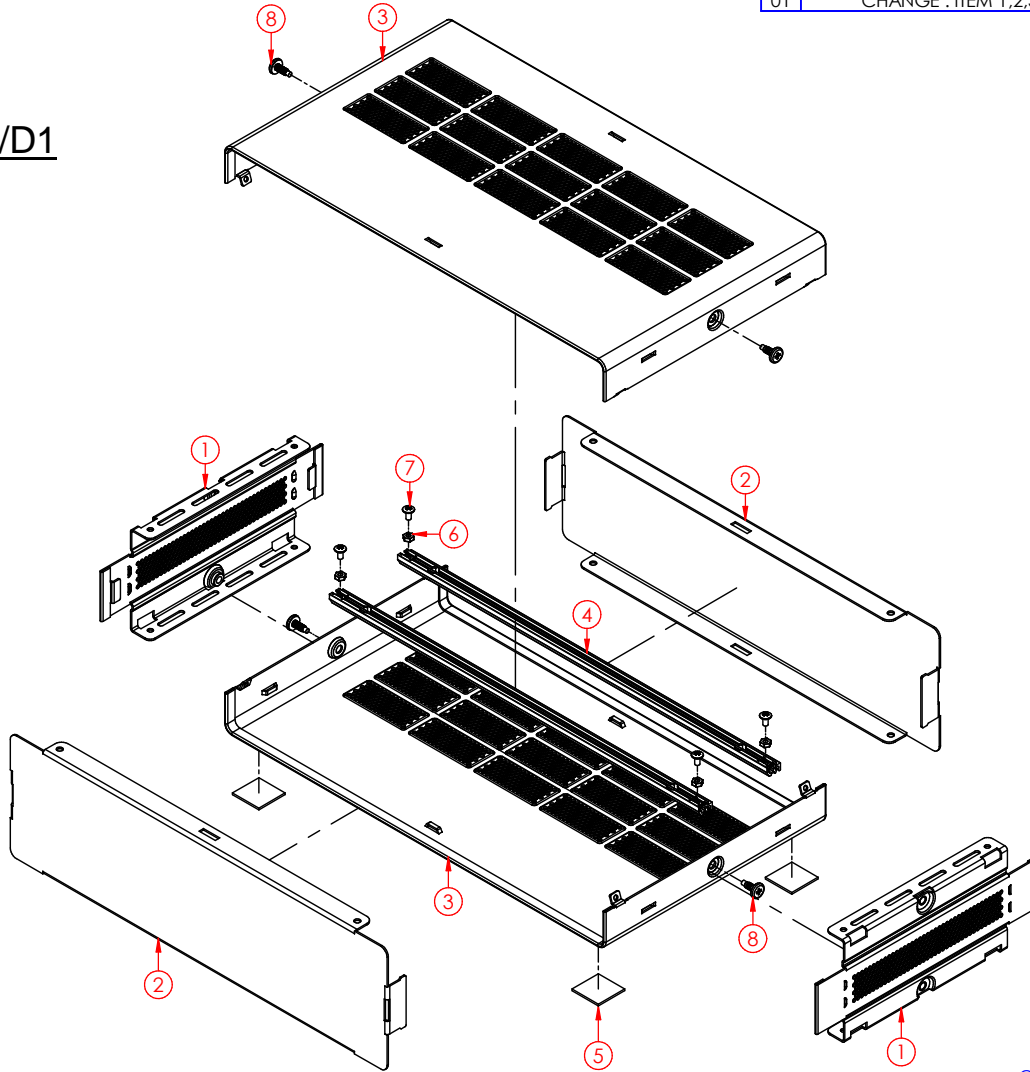
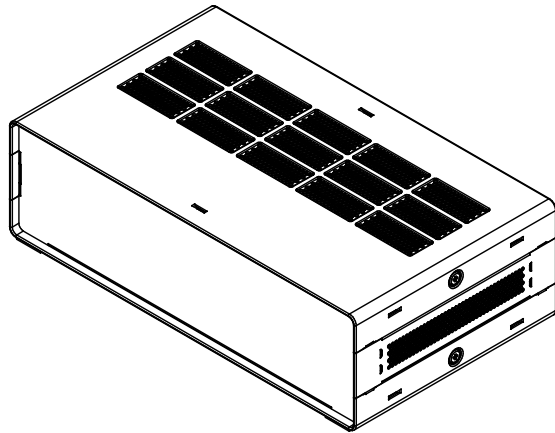
8 7 6 5 4 3 2 1

**CHEVAL CONFIDENTIAL - STRICTLY PRIVATE**

THE INFORMATION CONTAINED IN THIS DRAWING IS THE SOLE PROPERTY OF CHEVAL ELECTRONIC ENCLOSURE. ANY REPRODUCTION IN PART OR WHOLE WITHOUT THE WRITTEN PERMISSION OF CHEVAL ELECTRONIC ENCLOSURE IS PROHIBITED.

REVISIONS			
Rev.	Description	Appr.	Date
00	-		27 Oct 2016
01	CHANGE : ITEM 1,2,3		29 June 2017

**2U-5U/W1-W3/D1**

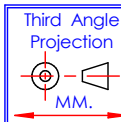


Item	DESCRIPTION	Dwg. No.	Qty
1	Side Frame 2U-5U D1	-	2
2	Front-Rear Panel 2U-5U W1,W2,W3	-	2
3	Top Bottom Cover D1, W1 W2 W3	-	2
4	General purpose Bar W1,W2,W3 Kit	017-06303100	2
5	Rubber Feet (RUB3M465A)	RUB3M465A	4
6	Nut M3 Blk Zinc	Hardware	8
7	Screw M3x6 Umbrella Phil BLK	SCRM36BLK-RW	4
8	Umbrella Philips Screw M4-8 BLK [Dog Point]	SCRM48PHBLK	4

**OPERATIONS**  
- PACK

**CUSTOMER REFERENCE**  
Dwg. No : 5803-001BB00  
Rev.No. :-  
Date :-

**Note:** All Items in Assembly to be RoHS Compliant. Including any Hardware. IF Any Part of Specification Conflicts With Latest RoHS Requirements. Contact Cheval QA.  
**Spec.:** Per Spec IP-CHE-XXXX



Drawn PHANSUK	Date 27 Oct 2016
Check 1	Date
Check 2	Date
Item Weight (Reference only) 0.99 kg	

Material			
K.	Scale	Units	QTY.
V.	1:3.5	MM.	-
Do not Scale Drawing			

<b>Customer</b>			
<b>Cheval</b>			
Job Name	System SAL		
CD No	CHV 63	Sub Dir	017-063

CHEVAL ELECTRONIC ENCLOSURE CO.,LTD. 145 Moo 17 Bangplee Industrial Estate, Soi 4 Bangsaotong, District. Bangsaotong Samutprakarn 10540 THAILAND. Tel : +66 3151504-5			
Dwg Title	SA Series Aluminum 2U-5U/W1-W3/D1		
File Name	017-063AAB01	Dwg No	017-063AAB01
			Sheet 1/2

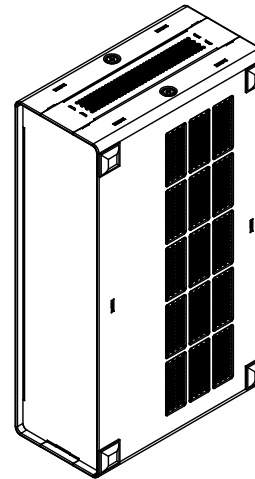
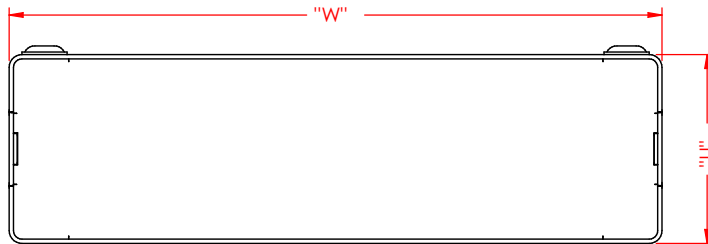
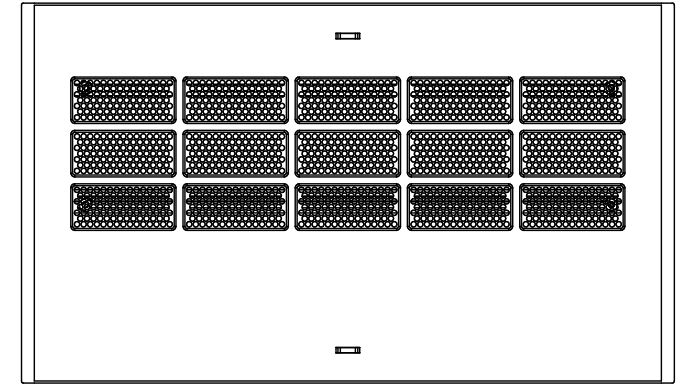
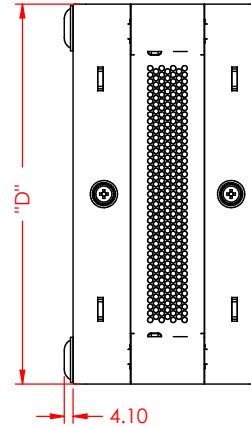
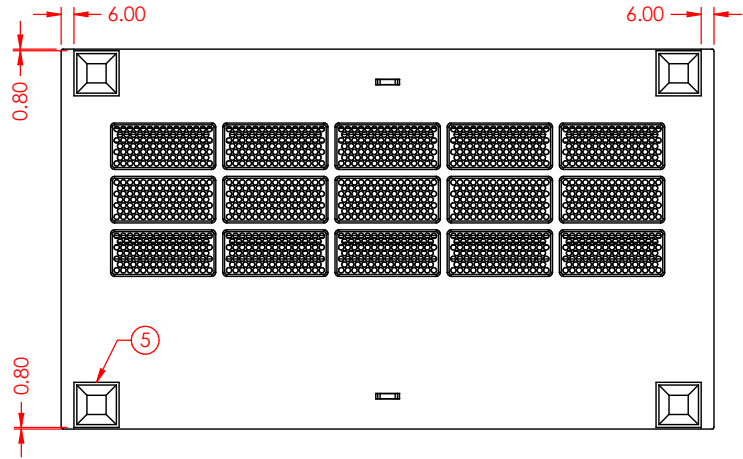
8 7 6 5 4 3 2 1

**CHEVAL CONFIDENTIAL - STRICTLY PRIVATE**

THE INFORMATION CONTAINED IN THIS DRAWING IS THE SOLE PROPERTY OF CHEVAL ELECTRONIC ENCLOSURE. ANY REPRODUCTION IN PART OR WHOLE WITHOUT THE WRITTEN PERMISSION OF CHEVAL ELECTRONIC ENCLOSURE IS PROHIBITED.

REVISIONS			
Rev.	Description	Appr.	Date
00	-		27 Oct 2016
01	CHANGE : ITEM 1,2,3		29 June 2017

**2U-5U/W1-W3/D1**



SA Series Aluminum	
Model	Dimension (W X D X U)
SAL2.0D1W1	203.80 X 177.80 X 88.35
SAL2.0D1W2	305.40 X 177.80 X 88.35
SAL2.0D1W3	432.40 X 177.80 X 88.35
SAL3.0D1W2	305.40 X 177.80 X 132.80
SAL3.0D1W3	432.40 X 177.80 X 132.80
SAL4.0D1W2	305.40 X 177.80 X 177.20
SAL4.0D1W3	432.40 X 177.80 X 177.20

**OPERATIONS**  
- PACK

**CUSTOMER REFERENCE**  
Dwg. No : 5803-001BBB00  
Rev.No. :-  
Date :-

**Note:** All Items in Assembly to be RoHS Compliant. Including any Hardware. IF Any Part of Specification Conflicts With Latest RoHS Requirements. Contact Cheval QA.  
**Spec.:** Per Spec IP-CHE-XXXX

<p>Third Angle Projection</p>	Drawn PHANSUK Date 27 Oct 2016	<p><b>Material</b></p> <p>SEE INDIVIDUAL COMPONENTS</p> <p>K. - Scale Units QTY.</p> <p>V. - 1:3.5 MM. -</p> <p>Do not Scale Drawing</p>
	Check 1 Date	
	Check 2 Date	
	Item Weight (Reference only) 0.99 kg	

<p><b>Customer</b></p> <p><b>Cheval</b></p>			<p>CHEVAL ELECTRONIC ENCLOSURE CO.,LTD.</p> <p>145 Moo 17 Bangplee Industrial Estate, Soi 4</p> <p>Bangsaotong, District. Bangsaotong</p> <p>Samutprakarn 10540 THAILAND. Tel : +66 3151504-5</p>						
			<p>Job Name System SAL</p>		<p>Dwg Title SA Series Aluminum 2U-5U/W1-W3/D1</p>				
CD No	CHV 63	Sub Dir	017-063	File Name	017-063AAB01	Dwg No	017-063AAB01	Sheet	2/2