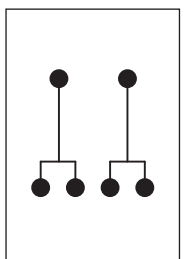
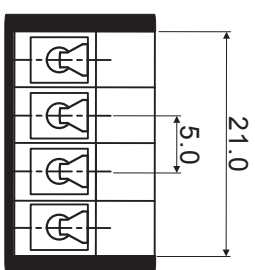
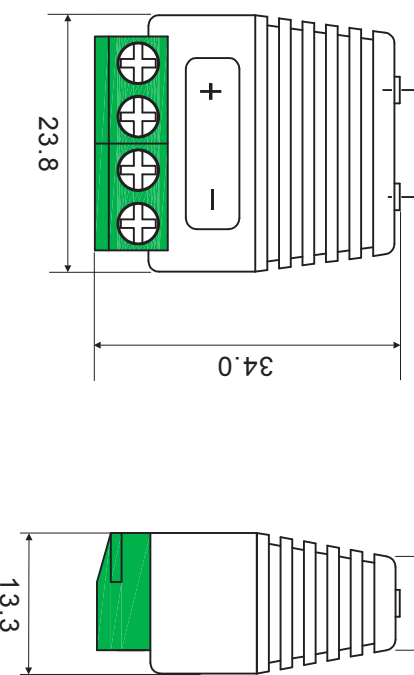
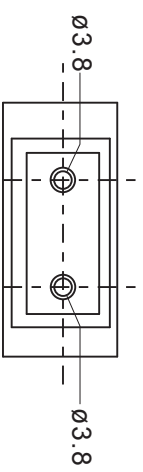


A B C D E F G H




Technical Data:

Electrical:

- Impedance: 50 Ohm
- Voltage rating: 30V/DC
- Current rating: 15A
- Contact resistance: <math><20\text{m}\Omega</math>
- Insulation resistance: >10M Ω / DC300V
- Wire range: 24-14AWG

Mechanical:

- Torque: 4.0kgs.cm/M2.5
- Operating temperature: -20°C to 105°C
- Material: Brass with Gold plated

DATE	REVISION	APPROVAL BY	DIMENSION	mm ± 0.3	MODEL No.	CLB-JL-8159
			DRAW BY	Camilly Pun	NAME	4.0 Twin Banana Socket Terminal Adaptor
			APPROVAL BY	RIKIKI So	 Concept Design Manufacture	
			DATE	18-08-2015	cieGroup Ltd, 3Widdowson Close, Banham Ind Est Banwell, Northampton, NN6 8NG, England T: +44(0)15977072 F: +44(0)15 977081 E: info@cie-group.com W: www.cie-group.com	