

FEATURES

- Anodised aluminium construction
- Can be mounted in any orientation
- 120Cycles/min switching frequency
- Long mechanical life (10⁶ cycles at 70bar)
- 0.5A maximum load (at 250 VAC)
- Accuracy $\pm 1\%$ of set pressure
- Fixed Hysteresis 15% of full-scale reading
- Wide temperature range -20° to +80°C
- Mechanical stops
- Wide adjustment range

RS PRO Pressure Switch, G 1/4 50bar to 400 bar

RS Stock No.: 297-0030



RS Professionally Approved Products bring to you professional quality parts across all product categories. Our product range has been tested by engineers and provides a comparable quality to the leading brands without paying a premium price.

Product Description

From the trusted RS PRO brand, a series of adjustable pressure switches designed for hydraulic and pneumatic applications. Designed to detect a rise or fall in fluid pressure, the durable switches provide an electrical signal once the set point pressure is reached. Pre-set pressure is adjusted via a graduated knob which can be locked with a grub screw. Clockwise to increase the pressure and anti-clockwise to decrease the pressure. Mechanical stops protect both the spring and the micro-switch from over pressurisation.

General Specifications

Pressure Type	Positive Pressure
Suitable Media	Oil
Output Type	NO/NC
Connection	G1/4
Type	Adjustable
Manufacturer Series	K5
Connection Thread Standard	G
Contact Operation	Normally Closed; Normally Open
LED Indicator	No
Applications	Pumps, Compressed air systems, Machine tools, Process control equipment, Sensors, Hydraulics and Pneumatics, Valves and switches

Electrical Specifications

Voltage Rating	250V ac
Contact Rating (ac)	5A @ 250V
Contact Rating (dc)	0.25 @ 250V
Maximum Load	0.5Ampere at 250 Volt AC

Mechanical Specifications

Body	Anodised aluminium construction
Switching Frequency	120cycles/min
Connection Thread Size	1/4in
Maximum Pressure Setting	600bar
Pressure Setting Range	0bar to 600 bar
Minimum Pressure Setting	0bar
Switching Accuracy	Accuracy $\pm 1\%$ of set pressure
Mechanical Life	Long mechanical life (10^6 cycles at 70bar)
Fixed Hysteresis	15% of full-scale reading

Operation Environment Specifications

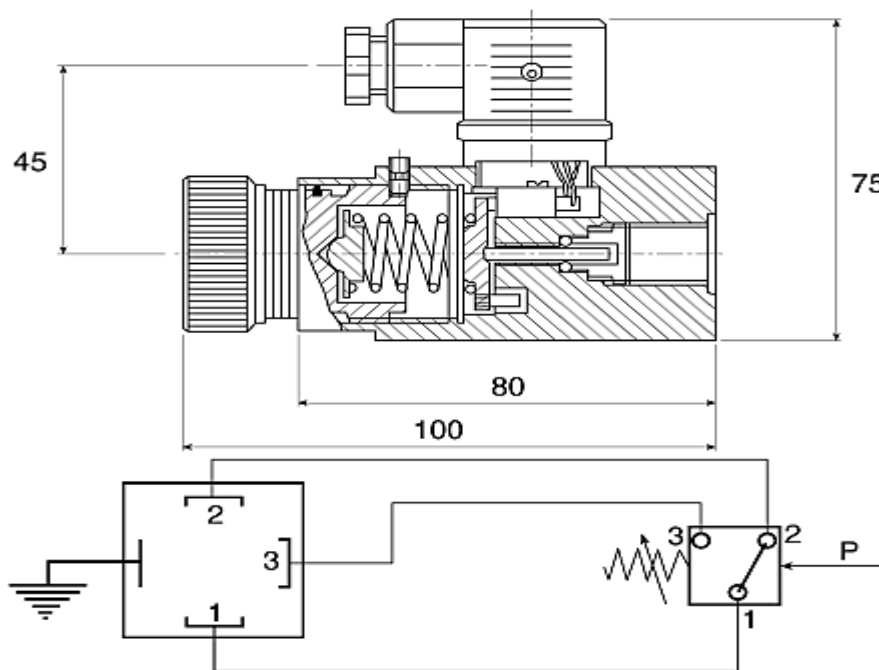
Minimum Operating Pressure	50bar
Maximum Operating Pressure	400bar
Minimum Operating Temperature	-20°C
Maximum Operating Temperature	80°C

Protection Category

IP Rating	IP65
Electric Protection	DIN43650

Approvals

Standard Met	RoHS Compliant
---------------------	----------------



Electrical Connection