

FEATURES

- Operating temperature range is from - 60 °C to + 300 °C
- RoHS and REACH compliant
- Silicon free

RS PRO STRAIGHT MALE ADAPTOR WITH ORING (PARALLEL)

RS Stock No.: 2312612



RS PROfessionally Approved Products bring to you professional quality parts across all product categories. Our product range has been tested by engineers and provides a comparable quality to the leading brands without paying a premium price.

Product Description

The RS PRO straight male adaptor with O ring (parallel) is made up of brass. The working pressures and working temperatures depend on which type of tube is used, for this reason, the values must be determined in accordance with the tube's features. Hereunder, we specify the values of the maximum pressure advised for the fittings at a temperature of 20° C connected with copper tube, which has a thickness of 1 mm. Here the tube size is 14 and corresponding maximum pressure advised is 99 bar.

General Specifications

Fitting Type	Adapter
Material	Brass
Fitting Direction	Straight
Application	Compressed Air, Pneumatic Automation, Industrial water circuits, Inert Gases, Fluids, Steam Vacuum

Mechanical Specifications

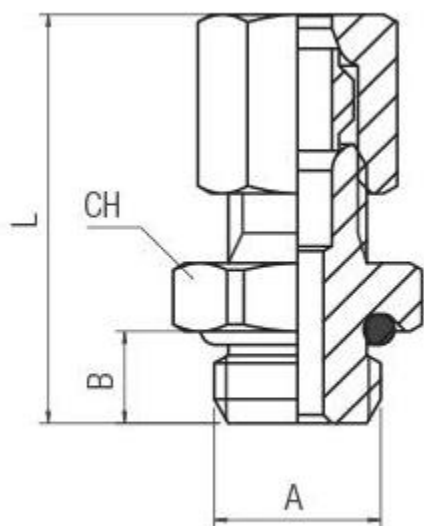
Pipe Fitting Connection Type	Threaded
Connection 1	M14 Metric Female
Connection Gender 1	Female
Thread Size 1	M14
Thread Standard 1	Metric
Connection 2	1/2 in BSP Male
Connection Gender 2	Male
Thread Size 2	1/2 in
Thread Standard 2	BSPT
Length	36.5mm
Wrench Size	25mm

Operation Environment Specifications

Temperature	Min.	Max.
	- 20°C	+80°C

Approvals

Approvals	RoHS and REACH compliant
-----------	--------------------------



Tube	A	L	B	CH	Pack.
14	1/2	36.5	9.5	25	10